



TEXAS A&M UNIVERSITY  
**SAN ANTONIO**

**Fact Book**  
**Fall 2015**



TEXAS A&M UNIVERSITY  
**SAN ANTONIO**

**FACT BOOK**  
**FALL 2015**

Office of Institutional Research  
Office of the Provost  
One University Way  
San Antonio, TX 78224

## TABLE OF CONTENTS

<b>GENERAL INFORMATION</b> .....	<b>5</b>
<b>History</b> .....	<b>6</b>
<b>Mission</b> .....	<b>6</b>
<b>University Accreditation</b> .....	<b>6</b>
<b>University Profile, Fall 2015</b> .....	<b>7</b>
<b>Texas A&amp;M University System Board of Regents, 2015 - 2016</b> .....	<b>8</b>
<b>A&amp;M-SA Executive Team, 2015 - 2016</b> .....	<b>9</b>
<b>Faculty Senate, 2015 - 2016</b> .....	<b>9</b>
<b>Staff Council, 2015 - 2016</b> .....	<b>9</b>
<b>Student Government Association, 2015 - 2016</b> .....	<b>10</b>
<b>Organizational Chart</b> .....	<b>11</b>
<b>Degree Programs, 2015 - 2016</b> .....	<b>12</b>
 <b>STUDENT INFORMATION</b> .....	 <b>15</b>
<b>Admissions</b> .....	<b>16</b>
Admission Data by Level, Fall 2011 - 2015 .....	16
Fall 2015 Admission by College and Level.....	17
<b>Enrollment</b> .....	<b>18</b>
Enrollment by Level Fall 2009 - 2015.....	18
Enrollment by Coordinating Board Classification Fall 2009 - 2015 .....	18
Annual Enrollment by Level .....	19
Annual Unduplicated Enrollment.....	19
FTE Enrollment, Fall 2009 - 2015 .....	20
Detailed Composition of Student Body, Fall 2011 - 2015 .....	21
Detailed Composition of Undergraduate Student Body, Fall 2011 - 2015 .....	22
Detailed Composition of Graduate Student Body, Fall 2011 - 2015 .....	23
Enrollment by Major, Fall 2009 - 2015 .....	24
Enrollment by Texas Residential County, Fall 2011 - 2015.....	28
Enrollment by Age, Fall 2011 - 2015.....	29
Enrollment by Age and Level, Fall 2015 .....	29
<b>Credit Hours</b> .....	<b>30</b>
Semester Credit Hours, Fall 2009 - 2015.....	30
Semester Credit Hours by College & Level, Fall 2009 - 2015 .....	31
Semester Credit Hours by College, Department, Instruction Area & Level, Fall 2015 .....	32
Semester Credit Hours by College, Department, Major, & Level, Fall 2015 .....	34
Student/Faculty Ratio, Fall 2011 - 2015 .....	35
Class & Semester Credit Hour Load, Fall 2010 - 2015 .....	36
Annual SCH by Level, 2009 - 2015 .....	37
SCH Generated by Instruction Mode, Fall 2010 - 2015 .....	38
SCH Generated by College, Department, Instruction Mode, & Level, Fall 2015 .....	39

<b>Degrees Awarded</b> .....	<b>40</b>
Annual Degrees Conferred by Level.....	40
Annual Degrees Conferred by Level & Gender.....	40
Annual Degrees Conferred by Level & Ethnicity.....	41
Annual Degrees Conferred by Level & Race.....	42
Annual Degrees Conferred by College, Department, & Level.....	43
Degrees Conferred by College, Department, Major, & Level.....	44
<b>FACULTY AND STAFF</b> .....	<b>47</b>
<b>Faculty</b> .....	<b>48</b>
A&M-SA Faculty, Fall 2011 - 2015.....	48
Faculty FTE (Full-Time Equivalent), Fall 2011 - 2015.....	48
Faculty Headcount, Fall 2011 - 2015.....	49
Faculty Headcount by Rank, Fall 2011 - 2015.....	50
Detailed Composition of Faculty, Fall 2011 - 2015.....	51
Detailed Composition of Full-Time Faculty, Fall 2015.....	52
Detailed Composition of Part-Time Faculty, Fall 2015.....	53
<b>Staff</b> .....	<b>54</b>
Detailed Composition of Staff, Fall 2011 - 2015.....	54

# GENERAL INFORMATION

## HISTORY

Established as the Texas A&M University-Kingsville System Center-San Antonio in January 2000, A&M-SA was created as a stand-alone university on May 23, 2009. A&M-SA meets the criteria for a Four-Year 5 SREB institution and offers 37 programs leading to baccalaureate and master's degrees. For more information, please visit [www.tamusa.edu](http://www.tamusa.edu).

## MISSION

Texas A&M University-San Antonio faculty and staff prepare and empower students through innovative and challenging academic and co-curricular programs that contribute to and enrich the economic and social development of the community and region. A solid foundation for success is established through dynamic teaching, scholarship, research, and public service that inspire graduates to lifelong learning and responsible global citizenship.

## UNIVERSITY ACCREDITATION

Texas A&M University-San Antonio is accredited by the Southern Association of Colleges and Schools Commission on Colleges to award baccalaureate and master's degrees. Contact the Commission on Colleges at 1866 Southern Lane, Decatur, Georgia 30033-4097 or call (404) 679-4500 for questions about the accreditation of Texas A&M University-San Antonio.

## UNIVERSITY PROFILE, FALL 2015

<b>Established</b>	2009
<b>President</b>	Dr. Cynthia Teniente Matson
<b>Enrollment</b>	4,564 (3,535.2 FTE*)
<b>Faculty</b>	204 (157.4 FTE)
<b>Staff</b>	198
<b>Colleges</b>	College of Arts & Sciences College of Business College of Education & Human Development
<b>Degree Programs</b>	37
<b>Annual Degrees Awarded</b>	1,316
<b>Budget</b>	\$54,421,472
<b>Endowment</b>	\$305,820.42
<b>Annual Tuition &amp; Fees</b>	\$6,212.46**

\*FTE student: 12 SCH per undergraduate, 9 SCH per graduate

\*\*Based on two semesters for a new full-time (12 SCH per semester) in-state undergraduate student

# TEXAS A&M UNIVERSITY SYSTEM BOARD OF REGENTS, 2015 - 2016

## Officers FY2016

- Cliff Thomas, Chairman, Board of Regents
- Elaine Mendoza, Vice Chairman, Board of Regents

## Member(s) with term set to expire on February 1, 2017

- Elaine Mendoza
- Judy Morgan
- Cliff Thomas

## Member(s) with term set to expire February 1, 2019

- Anthony G. Buzbee
- Morris E. Foster
- Charles W. Schwartz

## Member(s) with term set to expire on February 1, 2021

- Phil Adams
- Robert L. Albritton
- William “Bill” Mahomes, Jr.

## Member(s) with term set to expire May 31, 2016

- Alvaro Gabriel Pereira

**Office of the Board of Regents**  
Texas A&M University  
P.O. Box 15812  
College Station, TX 77841-5013

(979) 845-9600

Vickie Spillers, Executive Director  
[vickie@tamus.edu](mailto:vickie@tamus.edu)

Jackie Bell  
Assistant to the Board of Regents  
[jbelle@tamus.edu](mailto:jbelle@tamus.edu)



## A&M-SA EXECUTIVE TEAM, 2015 - 2016

Cynthia Teniente Matson	President
Brent Marriott Snow	Provost and Vice President for Academic Affairs
Darrell Morrison	Vice President for Business Affairs/CFO
Melissa Mahan	Vice President for Student Affairs

## FACULTY SENATE, 2015 - 2016

President:	Lorrie Webb, Associate Professor of Curriculum and Instruction
Vice President/President Elect:	Corinna Ross, Assistant Professor of Biology
Secretary:	Emily Bliss-Zaks, Subject Librarian
Parliamentarian:	Joseph M. Simpson, Assistant Professor of Sociology
Senators:	Kevin Barton, Association Professional Track in Computer Information Systems
	Cody Cox, Associate Professor of Psychology
	Katherine Gillen, Assistant Professor of English
	Daniel Glaser, Associate Professor of Management
	Tamara Hinojosa, Assistant Professor of Counseling
	Robin Kapavik, Associate Professor of Curriculum and Instruction
	Bryant Moore, Reference Librarian
	Maria Peterson, Assistant Professor of Special Education
	Sajjadur Rahman, Assistant Professor Economics
	Kathleen Voges, Associate Professor of Management

## STAFF COUNCIL, 2015 - 2016

President:	Sylvia Medel, Director of Student Rights & Responsibilities & International Affairs
Vice President:	Laura Sanchez, Purchasing Coordinator
Treasurer:	Sharon Othold, Financial Reporting Analyst
Secretary:	Kathleen Frank, Counselor
Parliamentarian:	Joni Foster, Academic Affairs Operations Administrator

## STUDENT GOVERNMENT ASSOCIATION, 2015 - 2016

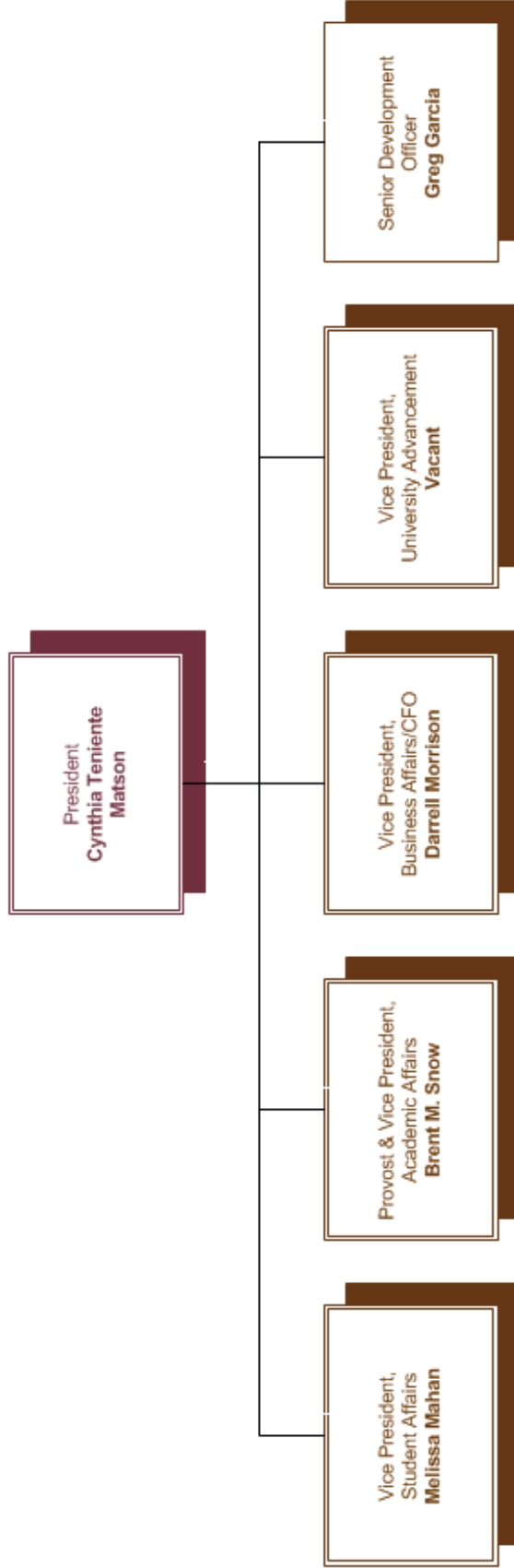
President:	Allison Garcia, Education & Human Development
Vice President:	Brian Harrin, Arts & Sciences
Secretary:	Kimberly Vasquez, Business
Historian:	Victoria Rojo, Education & Human Development
Chief Justice:	Christian MacDonald, Education & Human Development
Vice Justices:	Hoyt Garner, Education & Human Development Barbara Escandon, Arts & Sciences
PR Secretary:	Priscilla Galarza, Arts & Sciences
Treasurer:	Adolfo Olalde, Business
Student Organization Liaison:	Jonathan Lozano, Business
Senators:	Noland Arocho, Arts & Sciences Jennifer Faubion, Education & Human Development David Flores, Arts & Sciences Esther Ramsey, Education & Human Development Adrienne Reyes, Arts & Sciences Hector Soto, Education & Human Development Christopher Vasquez, Arts & Sciences

# ORGANIZATIONAL CHART



TEXAS A&M UNIVERSITY  
**SAN ANTONIO**

Texas A&M University-San Antonio  
Office of the President  
November 9, 2015



**Legend**

Maroon = University President  
Brown = Executive Team (ET)

# DEGREE PROGRAMS, 2015 - 2016<sup>1</sup>

Program	CIP Code	Degree Levels	
		Baccalaureate	Master's
<b>COLLEGE OF ARTS &amp; SCIENCES</b>			
<i>DEPARTMENT OF HUMANITIES &amp; SOCIAL SCIENCES</i>			
COMMUNICATIONS	09.0100.00	BA (120 SCH) Start date: 07/30/2009	
SPANISH	16.0905.00	BA (120 SCH) Start date: 04/18/2012	
ENGLISH	23.0101.00	BA (120 SCH) Start date: 07/30/2009	MA MS Start date: 07/30/2009
APPLIED ARTS AND SCIENCES	30.9999.40	BAAS (120 SCH) Start date: 07/30/2009	
CRIMINOLOGY 2018 Being phased out	45.0401.00	BS (120 SCH) Start date: 07/30/2009	
CRIMINOLOGY AND CRIMINAL JUSTICE	45.0401.00	BS (120 SCH) Start date: 07/30/2009	
POLITICAL SCIENCE	45.1001.00	BA (120 SCH) Start date: 07/30/2009	
SOCIOLOGY	45.1101.00	BA (120 SCH) Start date: 07/30/2009	
HISTORY	54.0101.00	BA (120 SCH) Start date: 07/30/2009	
<i>DEPARTMENT OF SCIENCE &amp; MATHEMATICS</i>			
BIOLOGY	26.0101.00	BA (120 SCH) BS (120 SCH) Start date: 07/30/2009	
MATHEMATICS	27.0101.00	BA (120 SCH) BS (120 SCH) Start date: 07/30/2009	
PSYCHOLOGY	42.0101.00	BA (120 SCH) Start date: 07/30/2009	
<b>COLLEGE OF BUSINESS</b>			
<i>DEPARTMENT OF ACCOUNTING, COMPUTING, &amp; FINANCE</i>			
COMPUTER SCIENCE	11.0701.00	BS (120 SCH) Start date: 09/06/2011	
ACCOUNTING	52.0301.00	BBA (120 SCH) Start date: 07/30/2009	MPA (36 SCH) Start date: 01/17/2011
FINANCE	52.0801.00	BBA (120 SCH) Start date: 07/30/2009	
COMPUTER INFORMATION SYSTEMS	52.1201.00	BBA (120 SCH) Start date: 07/30/2009	

1 Source: The Texas Higher Education Coordinating Board University Program Inventory (<http://www.theccb.state.tx.us/apps/programinventory/>); accessed on 11/5/2015.

Program	CIP Code	Degree Levels	
		Baccalaureate	Master's
<i>DEPARTMENT OF MANAGEMENT &amp; MARKETING</i>			
GENERAL BUSINESS ADMINISTRATION	52.0101.00	BBA (120 SCH) Start date: 07/30/2009	
BUSINESS ADMINISTRATION	52.0201.00		MBA Start date: 07/30/2009
MANAGEMENT	52.0201.00	BBA (120 SCH) Start date: 07/30/2009	
INTERNATIONAL BUSINESS MANAGMENT	52.1101.00	BBA (120 SCH) Start date: 07/30/2009	
MARKETING	52.1401.00	BBA (120 SCH) Start date: 07/30/2009	
<b>COLLEGE OF EDUCATION &amp; HUMAN DEVELOPMENT</b>			
<i>DEPARTMENT OF COUNSELING, HEALTH &amp; KINESIOLOGY</i>			
COUNSELING AND GUIDANCE	13.1101.00		MA MS Start date: 07/30/2009
KINESIOLOGY	31.0505.00	BS (120 SCH) Start date: 07/30/2009	MS Start date: 07/30/2009
<i>DEPARTMENT OF EDUCATOR &amp; LEADERSHIP PREPARATION</i>			
BILINGUAL EDUCATION	13.0201.00		MA MS Start date: 07/30/2009
EDUCATIONAL ADMINISTRATION	13.0401.00		MA MS Start date: 07/30/2009
SPECIAL EDUCATION	13.1001.00		MED Start date: 07/30/2009
EARLY CHILDHOOD	13.1210.00		MED Start date: 07/30/2009
READING SPECIALIZATION	13.1315.00		MS Start date: 07/30/2009
INTERDISCIPLINARY STUDIES	30.9999.01	BS (120 SCH) Start date: 07/30/2009	



# STUDENT INFORMATION

# ADMISSIONS

## Admission Data by Level, Fall 2011 - 2015<sup>1</sup>

	2011		2012		2013		2014		2015	
	Count	Percent Conversion	Count	Percent Conversion	Count	Percent Conversion	Count	Percent Conversion	Count	Percent Conversion
<b>Undergraduate</b>										
Applications	1,255		1,508		1,630		1,545		1,735	
Accepted	1,131	90%	1,312	87%	1,438	88%	1,281	83%	1,517	87%
Enrolled	771	68%	886	68%	1,005	70%	923	72%	1,038	68%
<b>Post-Baccalaureate</b>										
Applications	27		34		14		2		5	
Accepted	22	81%	33	97%	13	93%	1	50%	5	100%
Enrolled	15	68%	24	73%	9	69%	1	100%	2	40%
<b>Graduate</b>										
Applications	413		499		421		356		370	
Accepted	377	91%	441	88%	351	83%	301	85%	303	82%
Enrolled	286	76%	334	76%	237	68%	293	97%	205	68%
<b>Total</b>										
Applications	1,695		2,041		2,065		1,903		2,110	
Accepted	1,530	90%	1,786	88%	1,802	87%	1,583	83%	1,825	86%
Enrolled	1,072	70%	1,244	70%	1,251	69%	1,217	77%	1,245	68%

<sup>1</sup> Source: CBM001 and CBM00B



## Fall 2015 Admission by College and Level<sup>2</sup>

	Applied	Accepted	Enrolled
<b>Arts &amp; Sciences</b>			
Humanities & Social Sciences			
Undergraduate	551	469	367
Graduate	7	7	5
Science & Mathematics			
Undergraduate	310	271	172
Graduate	0	0	0
<b>Business</b>			
Accounting, Computing, & Finance			
Undergraduate	199	176	106
Graduate	37	31	22
Management & Marketing			
Undergraduate	288	256	159
Graduate	147	120	79
<b>Education &amp; Human Development</b>			
Counseling, Health, & Kinesiology			
Undergraduate	106	90	54
Graduate	100	79	51
Educator & Leadership Preparation			
Undergraduate	276	250	175
Post-Baccalaureate	5	5	2
Graduate	79	66	48
<b>Unknown</b>			
Undergraduate	5	5	1
Graduate	0	0	0

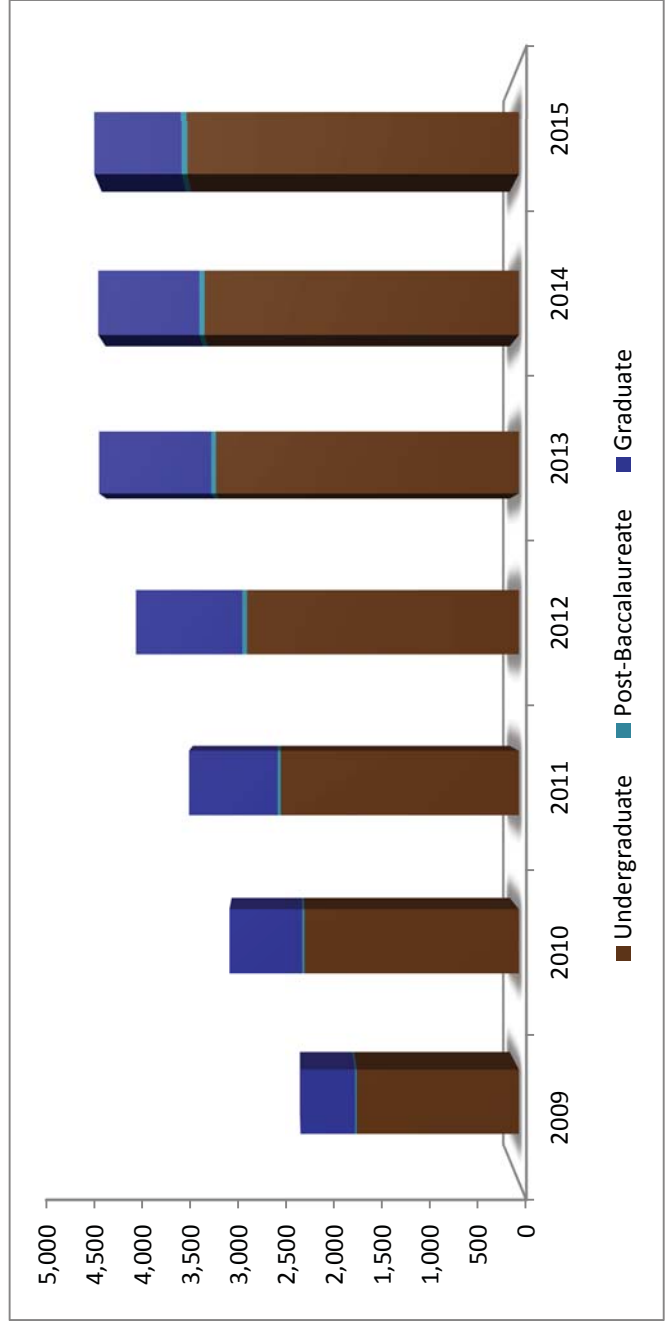
<sup>2</sup> Source: CBM001, CBM00B, and FactbookApplicants.SQL.

Enrollment by Level Fall 2009 - 2015<sup>3</sup>

	2009		2010		2011		2012		2013		2014		2015	
	#	%	#	%	#	%	#	%	#	%	#	%	#	%
<b>Undergraduate</b>	1,757	74.99%	2,324	74.49%	2,604	73.27%	2,983	72.47%	3,316	73.49%	3,444	76.18%	3,634	79.62%
<b>Graduate</b>	586	25.01%	796	25.51%	950	26.73%	1,133	27.53%	1,196	26.51%	1,077	23.82%	930	20.38%
<b>Total</b>	2,343		3,120		3,554		4,116		4,512		4,521		4,564	

Enrollment by Coordinating Board Classification Fall 2009 - 2015

	2009		2010		2011		2012		2013		2014		2015	
	#	%	#	%	#	%	#	%	#	%	#	%	#	%
<b>Undergraduate</b>	1,740	74.26%	2,301	73.75%	2,569	72.28%	2,931	71.21%	3,264	72.34%	3,386	74.89%	3,571	78.24%
<b>Post-Baccalaureate</b>	17	0.73%	23	0.74%	35	0.98%	52	1.26%	52	1.15%	58	1.28%	63	1.38%
<b>Graduate</b>	586	25.01%	796	25.51%	950	26.73%	1,133	27.53%	1,196	26.51%	1,077	23.82%	930	20.38%
<b>Total</b>	2,343		3,120		3,554		4,116		4,512		4,521		4,564	



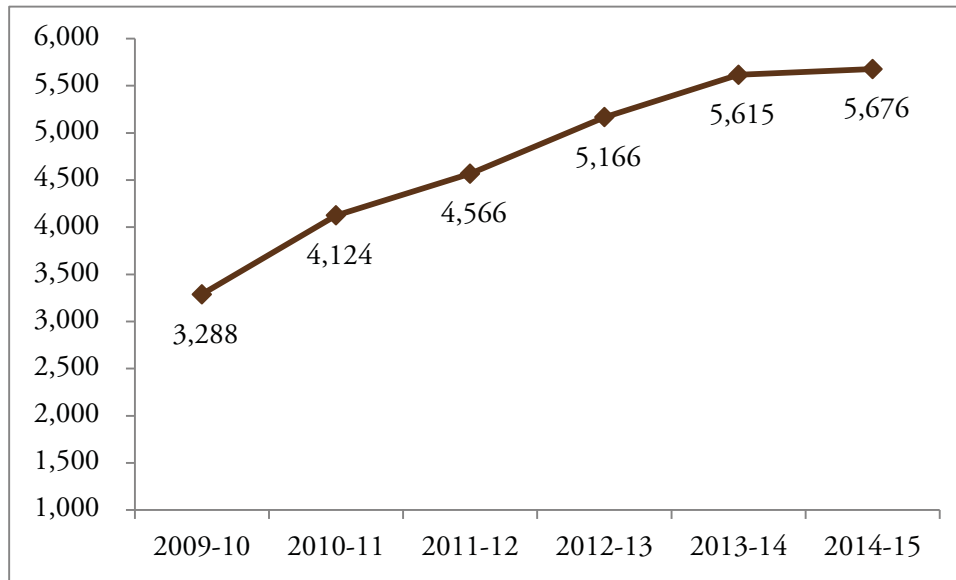
A&M-SA's enrollment has grown by 95% since 2009.

3 Source: CBM001. Each student is counted once regardless of number of enrolled courses.

### Annual Enrollment by Level<sup>4</sup>

	2009-2010	2010-2011	2011-2012	2012-2013	2013-2014	2014-2015
<b>Fall</b>						
Undergraduate	1,740	2,301	2,569	2,931	3,264	3,386
Post-Baccalaureate	17	23	35	52	52	58
Graduate	586	796	950	1,133	1,196	1,077
Total	2,343	3,120	3,554	4,116	4,512	4,521
<b>Spring</b>						
Undergraduate	1,865	2,348	2,573	2,778	3,155	3,219
Post-Baccalaureate	25	27	39	48	53	47
Graduate	678	866	988	1,100	1,100	941
Total	2,568	3,241	3,600	3,926	4,308	4,207
<b>Summer</b>						
Undergraduate	978	1,033	1,028	1,249	1,332	1,463
Post-Baccalaureate	13	15	17	16	19	22
Graduate	440	477	565	636	575	459
Total	1,431	1,525	1,610	1,901	1,926	1,944

### Annual Unduplicated Enrollment<sup>5</sup>

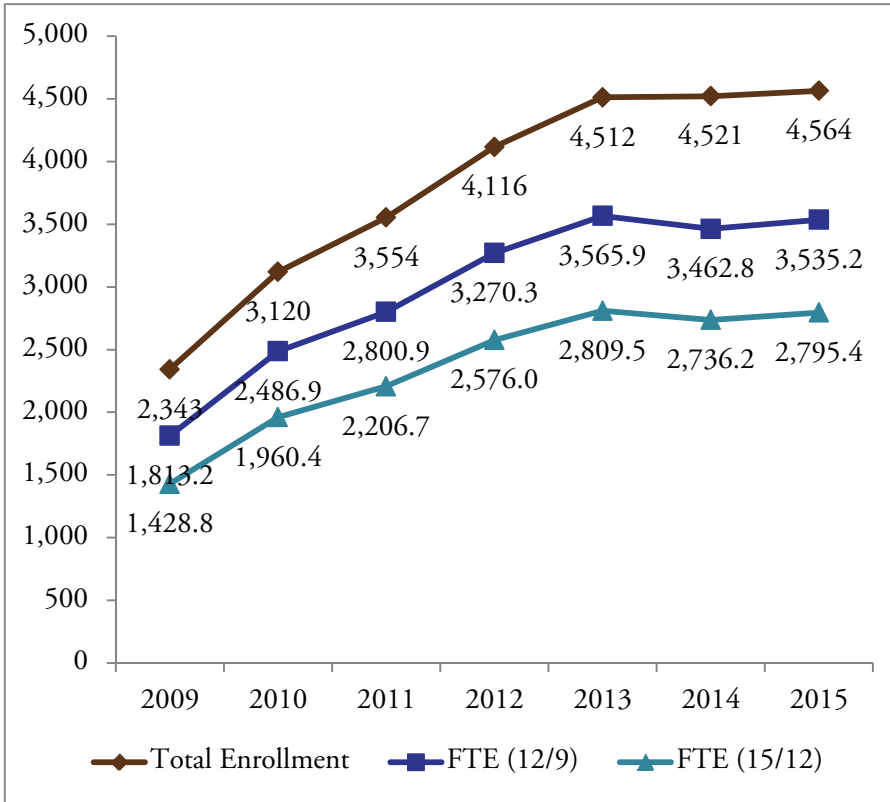


4 Source: CBM001. Students who were enrolled during the second half of a regular term are reported on the CBM001 of the following term; however, they have been counted in their actual enrolled term in this table.

5 Students who enrolled in more than one semester of the academic year are counted only once in this total.

## FTE Enrollment, Fall 2009 - 2015

	2009	2010	2011	2012	2013	2014	2015
<b>Total Enrollment</b>	2,343	3,120	3,554	4,116	4,512	4,521	4,564
<b>FTE (12/9)</b>	1,813.2	2,486.9	2,800.9	3,270.3	3,565.9	3,462.8	3,535.2
<b>FTE (15/12)</b>	1,428.8	1,960.4	2,206.7	2,576.0	2,809.5	2,736.2	2,795.4



**The College of Arts & Sciences added departments in 2013. In 2014, the College of Business added departments, and the College of Education & Kinesiology reorganized into the College of Education & Human Development**

**Two-thirds of A&M-SA's students classify themselves as Hispanic or Latino.**

FTE (12/9) is based on 12 SCH per undergraduate student and 9 SCH per graduate student.

FTE (15/12) is based on 15 SCH per undergraduate student and 12 SCH per graduate student.

## Detailed Composition of Student Body, Fall 2011 - 2015<sup>6</sup>

	2011		2012		2013		2014		2015	
	#	%	#	%	#	%	#	%	#	%
<b>Attendance Status</b>										
Full-Time	1,444	40.63%	1,634	39.70%	1,703	37.74%	1,720	38.04%	1,778	38.96%
Part-Time	2,110	59.37%	2,482	60.30%	2,809	62.26%	2,801	61.96%	2,786	61.04%
<b>Enrollment by College</b>										
Arts & Sciences	1,064	29.94%	1,316	31.97%						
Humanities & Social Sciences					1,077	23.87%	1,180	26.10%	1,237	27.10%
Science & Mathematics					428	9.49%	415	9.18%	468	10.25%
Business	978	27.52%	1,198	29.11%	1,310	29.03%				
Accounting, Computing, & Finance							533	11.79%	523	11.46%
Management & Marketing							840	18.58%	870	19.06%
Education & Human Development										
Curriculum & Kinesiology	1120	31.51%	1,124	27.31%	1,159	25.69%				
Leadership & Counseling	376	10.58%	459	11.15%	514	11.39%				
Counseling, Health, & Kinesiology							482	10.66%	438	9.60%
Educator & Leadership Preparation							1,047	23.16%	996	21.82%
Unknown	16	0.45%	19	0.46%	24	0.53%	24	0.53%	32	0.70%
<b>Gender</b>										
Male	1,139	32.05%	1,342	32.60%	1,542	34.18%	1,614	35.70%	1,647	36.09%
Female	2,415	67.95%	2,774	67.40%	2,970	65.82%	2,907	64.30%	2,917	63.91%
<b>Race</b>										
American Indian or Alaskan Native	4	0.11%	69	1.68%	90	1.99%	108	2.39%	104	2.28%
Asian	20	0.56%	48	1.17%	69	1.53%	65	1.44%	66	1.45%
Black or African-American	206	5.80%	270	6.56%	283	6.27%	294	6.50%	293	6.42%
International	10	0.28%	19	0.46%	30	0.66%	42	0.93%	49	1.07%
Multiracial	31	0.87%	102	2.48%	120	2.66%	163	3.61%	157	3.44%
Native Hawaiian or Other Pacific Islander	2	0.06%	4	0.10%	7	0.16%	5	0.11%	9	0.20%
Unknown or Not Reported	180	5.06%	1,021	24.81%	963	21.34%	893	19.75%	870	19.06%
White	803	22.59%	2,583	62.76%	2,950	65.38%	2,951	65.27%	3,016	66.08%
<b>Ethnicity</b>										
Hispanic or Latino	2,298	64.66%	2,797	67.95%	3,052	67.64%	3,026	66.93%	3,071	67.29%
Not Hispanic or Latino	1,076	30.28%	1,233	29.96%	1,378	30.54%	1,425	31.52%	1,443	31.62%
Unreported	180	5.06%	86	2.09%	82	1.82%	70	1.55%	50	1.10%
<b>Total Enrollment</b>	<b>3,554</b>		<b>4,116</b>		<b>4,512</b>		<b>4,521</b>		<b>4,564</b>	

**57% of enrolled students report that they are the first generation in their families to attend college.**

**17% of enrolled students report a personal or immediate family affiliation with a branch of the military.**

6 Source: CBM001. As of fall 2012, the Texas Higher Education Coordinating Board had disaggregated the reporting of race and ethnicity. Because of this shift in reporting, the total for all races prior to fall 2012 will be less than the total enrollment for those years.

## Detailed Composition of Undergraduate Student Body, Fall 2011 - 2015

	2011		2012		2013		2014		2015	
	#	%	#	%	#	%	#	%	#	%
<b>Attendance Status</b>										
Full-Time	1,199	46.04%	1,435	48.11%	1,513	45.63%	1,444	41.93%	1,536	42.27%
Part-Time	1,405	53.96%	1,548	51.89%	1,803	54.37%	2,000	58.07%	2,098	57.73%
<b>Enrollment by College</b>										
Arts & Sciences	1,052	40.40%	1,299	43.55%						
Humanities & Social Sciences					1,061	32.00%	1,160	33.68%	1,218	33.52%
Science & Mathematics					428	12.91%	415	12.05%	468	12.88%
Business	628	24.12%	765	25.65%	890	26.84%				
Accounting, Computing, & Finance							476	13.82%	461	12.69%
Management & Marketing							478	13.88%	527	14.50%
Education & Human Development										
Curriculum & Kinesiology	920	35.33%	909	30.47%	929	28.02%				
Leadership & Counseling										
Counseling, Health, & Kinesiology							173	5.02%	199	5.48%
Educator & Leadership Preparation							732	21.25%	757	20.83%
Unknown	4	0.15%	10	0.34%	8	0.24%	10	0.29%	4	0.11%
<b>Gender</b>										
Male	837	32.14%	961	32.22%	1,155	34.83%	1,262	36.64%	1,323	36.41%
Female	1,767	67.86%	2,022	67.78%	2,161	65.17%	2,182	63.36%	2,311	63.59%
<b>Race</b>										
American Indian or Alaskan Native	34	1.31%	54	1.81%	72	2.17%	88	2.56%	94	2.59%
Asian	12	0.46%	22	0.74%	40	1.21%	44	1.28%	49	1.35%
Black or African-American	163	6.26%	188	6.30%	203	6.12%	215	6.24%	223	6.14%
International	4	0.15%	15	0.50%	21	0.63%	30	0.87%	35	0.96%
Multiracial	42	1.61%	75	2.51%	90	2.71%	127	3.69%	133	3.66%
Native Hawaiian or Other Pacific Islander	3	0.12%	3	0.10%	6	0.18%	5	0.15%	7	0.19%
Unknown or Not Reported	946	36.33%	802	26.89%	771	23.25%	740	21.49%	743	20.45%
White	1,400	53.76%	1,824	61.15%	2,113	63.72%	2,195	63.73%	2,350	64.67%
<b>Ethnicity</b>										
Hispanic or Latino	1,716	65.90%	2,082	69.80%	2,282	68.82%	2,342	68.00%	2,504	68.90%
Not Hispanic or Latino	739	28.38%	833	27.92%	969	29.22%	1,050	30.49%	1,092	30.05%
Unreported	149	5.72%	68	2.28%	65	1.96%	52	1.51%	38	1.05%
<b>Total Enrollment</b>	<b>2,604</b>		<b>2,983</b>		<b>3,316</b>		<b>3,444</b>		<b>3,634</b>	

## Detailed Composition of Graduate Student Body, Fall 2011 - 2015

	2011		2012		2013		2014		2015	
	#	%	#	%	#	%	#	%	#	%
<b>Attendance Status</b>										
Full-Time	267	28.11%	319	28.16%	339	28.34%	276	25.63%	242	26.02%
Part-Time	683	71.89%	814	71.84%	857	71.66%	801	74.37%	688	73.98%
<b>Enrollment by College</b>										
Arts & Sciences	12	1.26%	17	1.50%						
Humanities & Social Sciences					16	1.34%	20	1.86%	19	2.04%
Science & Mathematics										
Business	350	36.84%	433	38.22%	420	35.12%				
Accounting, Computing, & Finance							57	5.29%	62	6.67%
Management & Marketing							362	33.61%	343	36.88%
Education & Human Development										
Curriculum & Kinesiology	200	21.05%	215	18.98%	230	19.23%				
Leadership & Counseling	376	39.58%	459	40.51%	514	42.98%				
Counseling, Health, & Kinesiology							309	28.69%	239	25.70%
Educator & Leadership Preparation							315	29.25%	239	25.70%
Unknown	12	1.26%	9	0.79%	16	1.34%	14	1.30%	28	3.01%
<b>Gender</b>										
Male	302	31.79%	381	33.63%	387	32.36%	352	32.68%	324	34.84%
Female	648	68.21%	752	66.37%	809	67.64%	725	67.32%	606	65.16%
<b>Race</b>										
American Indian or Alaskan Native	8	0.84%	15	1.32%	18	1.51%	20	1.86%	10	1.08%
Asian	12	1.26%	26	2.29%	29	2.42%	21	1.95%	17	1.83%
Black or African-American	62	6.53%	82	7.24%	80	6.69%	79	7.34%	70	7.53%
International	4	0.42%	4	0.35%	9	0.75%	12	1.11%	14	1.51%
Multiracial	21	2.21%	27	2.38%	30	2.51%	34	3.16%	24	2.58%
Native Hawaiian or Other Pacific Islander	1	0.11%	1	0.09%	1	0.08%	0	0.00%	2	0.22%
Unknown or Not Reported	287	30.21%	219	19.33%	192	16.05%	155	14.39%	127	13.66%
White	555	58.42%	759	66.99%	837	69.98%	756	70.19%	666	71.61%
<b>Ethnicity</b>										
Hispanic or Latino	584	61.47%	715	63.11%	770	64.38%	684	63.51%	567	60.97%
Not Hispanic or Latino	311	32.74%	400	35.30%	409	34.20%	375	34.82%	351	37.74%
Unreported	55	5.79%	18	1.59%	17	1.42%	18	1.67%	12	1.29%
<b>Total Enrollment</b>	<b>950</b>		<b>1,133</b>		<b>1,196</b>		<b>1,077</b>		<b>930</b>	

## Enrollment by Major, Fall 2009 - 2015<sup>7</sup>

	2009	2010	2011	2012	2013	2014	2015
<b>Arts &amp; Sciences</b>							
<b>Humanities &amp; Social Sciences</b>							
Applied Arts & Sciences							
Undergraduate	170	183	228	349	423	468	440
Post-baccalaureate		1		3	3	2	4
Total	170	184	228	352	426	470	444
Communication							
Undergraduate	22	37	39	51	79	86	104
Post-baccalaureate				1			
Total	22	37	39	52	79	86	104
Criminology							
Undergraduate	102	155	186	207	253	267	301
Post-baccalaureate		1	1	5	1	3	3
Total	102	156	187	212	254	270	304
English							
Undergraduate	42	55	72	90	84	100	89
Post-baccalaureate		1		1	1	2	2
Graduate	3	10	12	17	16	20	19
Total	45	66	84	108	101	122	110
History							
Undergraduate	56	74	68	74	100	102	127
Post-baccalaureate	1	2		1	1	2	1
Total	58	76	68	75	101	104	128
Political Science							
Undergraduate	6	8	16	17	23	27	32
Post-baccalaureate					1		1
Total	6	8	16	17	24	27	33
Sociology							
Undergraduate	51	73	74	84	92	100	113
Post-baccalaureate			1	1		1	1
Total	51	73	75	85	92	101	114

7 Source: CBM001

**The Bachelor of Applied Arts  
& Sciences is the second largest  
undergraduate program.  
Over half of BAAS students pursue  
concentrations in Business.**



## Enrollment by Major, Fall 2009 - 2015 (con't.)

	2009	2010	2011	2012	2013	2014	2015
<b>Science &amp; Mathematics</b>							
Biology							
Undergraduate	40	91	119	135	147	151	183
Post-baccalaureate			1	5	3	1	1
Total	40	91	120	140	150	152	184
Mathematics							
Undergraduate	11	30	41	48	51	39	43
Post-baccalaureate			3	3	2	3	1
Total	11	30	44	51	53	42	44
Psychology							
Undergraduate	128	164	199	223	224	219	238
Post-baccalaureate	1	4	4	1	1	2	2
Total	129	168	203	224	225	221	240
<b>Business</b>							
<b>Accounting, Computing, &amp; Finance</b>							
Accounting							
Undergraduate	108	123	136	178	212	245	213
Post-baccalaureate	11	8	13	21	24	22	22
Graduate			29	49	47	57	62
Total	119	131	178	248	283	324	297
Computer Information Systems							
Undergraduate	70	74	94	94	92	91	94
Post-baccalaureate	1		4	4	4	5	6
Total	71	74	98	98	96	96	100
Computer Science							
Undergraduate				5	22	32	36
Post-baccalaureate							2
Total				5	22	32	38
Finance							
Undergraduate	28	33	58	56	59	81	88
Post-baccalaureate				1			
Total	28	33	58	57	59	81	88

## Enrollment by Major, Fall 2009 - 2015 (con't.)

	2009	2010	2011	2012	2013	2014	2015
<b>Management &amp; Marketing</b>							
Business Administration							
Graduate	153	257	321	384	373	362	343
Total	153	257	321	384	373	362	343
General Business Administration							
Undergraduate	39	93	103	137	176	165	159
Post-baccalaureate		1	2	1	2	5	3
Total	39	94	105	138	178	170	162
International Business Management							
Undergraduate	9	31	31	31	25	31	37
Post-baccalaureate					1	1	2
Total	9	31	31	31	26	32	39
Management							
Undergraduate	172	202	152	184	203	209	257
Post-baccalaureate					3	3	5
Total	172	202	152	184	206	212	262
Marketing							
Undergraduate	34	44	35	52	66	64	64
Post-baccalaureate		1		1	1		
Total	34	45	35	53	67	64	64
<b>Education &amp; Human Development</b>							
<b>Counseling, Health, &amp; Kinesiology</b>							
Counseling & Guidance							
Graduate	167	223	265	333	366	291	221
Total	167	223	265	333	366	291	221
Kinesiology							
Undergraduate	109	134	108	115	154	172	198
Post-baccalaureate			1	1	1	1	1
Graduate	6	11	27	22	18	18	18
Total	115	145	136	138	173	191	217

**The Master of Business  
Administration  
is the largest graduate program at  
A&M-SA.**

## Enrollment by Major, Fall 2009 - 2015 (con't.)

	2009	2010	2011	2012	2013	2014	2015
<b>Educator &amp; Leadership Preparation</b>							
Bilingual Education							
Graduate	46	33	36	31	27	41	33
Total	46	33	36	31	27	41	33
Early Childhood							
Graduate	44	46	43	48	58	47	30
Total	44	46	43	48	58	47	30
Educational Administration							
Graduate	72	105	111	126	148	110	77
Total	72	105	111	126	148	110	77
Grades 8-12 Certification							
Graduate	22	23	20	21	12	7	6
Total	22	23	20	21	12	7	6
Interdisciplinary Studies							
Undergraduate	543	696	807	792	772	729	753
Post-baccalaureate	2	2	4	1	2	3	4
Total	545	698	811	793	774	732	757
Reading Specialization							
Graduate	21	18	24	32	35	29	23
Total	21	18	24	32	35	29	23
Special Education							
Graduate	51	57	50	61	80	81	70
Total	51	57	50	61	80	81	70
<b>Undeclared/Unknown</b>							
Undergraduate		1	3	9	7	8	2
Post-baccalaureate	1	2	1	1	1	2	2
Graduate		13	12	9	16	14	28
Total	1	16	16	19	24	24	32
<b>Total Enrollment</b>	<b>2,343</b>	<b>3,120</b>	<b>3,554</b>	<b>4,116</b>	<b>4,512</b>	<b>4,521</b>	<b>4,564</b>

**The Bachelor of Science  
 in Interdisciplinary Studies  
 is the largest undergraduate program  
 at A&M-SA.  
 Most graduates of this program will  
 seek teacher certification.**

## Enrollment by Texas Residential County, Fall 2011 - 2015<sup>8</sup>

County	2011		2012		2013		2014		2015	
	#	%	#	%	#	%	#	%	#	%
<b>Bexar</b>	3,071	86.4%	3,603	87.5%	3,977	88.1%	4,006	88.6%	3,948	86.5%
<b>Atascosa</b>	60	1.7%	63	1.5%	61	1.4%	73	1.6%	87	1.9%
<b>Wilson</b>	97	2.7%	101	2.5%	74	1.6%	66	1.5%	79	1.7%
<b>Guadalupe</b>	43	1.2%	48	1.2%	60	1.3%	54	1.2%	68	1.5%
<b>Medina</b>	68	1.9%	62	1.5%	63	1.4%	39	0.9%	52	1.1%
<b>Comal</b>	25	0.7%	28	0.7%	34	0.8%	31	0.7%	45	1.0%
<b>Webb</b>	10	0.3%	13	0.3%	13	0.3%	18	0.4%	30	0.7%
<b>Kendall</b>	11	0.3%	6	0.1%	5	0.1%	8	0.2%	13	0.3%
<b>Frio</b>	17	0.5%	17	0.4%	11	0.2%	7	0.2%	12	0.3%
<b>Other Counties</b>	115	3.2%	136	3.3%	172	3.8%	169	3.7%	180	3.9%
<b>Total Texas</b>	3,517	99.0%	4,077	99.1%	4,470	99.1%	4,471	98.9%	4,514	98.9%
<b>Other States</b>	9	0.3%	13	0.3%	14	0.3%	17	0.4%	23	0.5%
<b>Other Countries</b>	27	0.8%	26	0.6%	28	0.6%	33	0.7%	27	0.6%
<b>Total</b>	3,553		4,116		4,512		4,521		4,564	

<sup>8</sup> Source: CBM001

**Nearly 90% of  
A&M-SA's students  
come from urban areas.**

### Enrollment by Age, Fall 2011 - 2015<sup>9</sup>

	2011		2012		2013		2014		2015	
	#	%	#	%	#	%	#	%	#	%
<21	32	0.9%	47	1.1%	73	1.6%	65	1.44%	110	2.41%
21-25	992	27.9%	1,128	27.4%	1,304	28.9%	1,344	29.73%	1598	35.01%
26-30	903	25.4%	1,024	24.9%	1,121	24.8%	1,177	26.03%	1111	24.34%
31-35	573	16.1%	652	15.8%	712	15.8%	690	15.26%	670	14.68%
36-40	405	11.4%	470	11.4%	474	10.5%	485	10.73%	399	8.74%
41-45	281	7.9%	328	8.0%	327	7.2%	309	6.83%	291	6.38%
46-50	184	5.2%	234	5.7%	250	5.5%	218	4.82%	208	4.56%
>50	184	5.2%	233	5.7%	251	5.6%	233	5.15%	177	3.88%
<b>Total</b>	3,554		4,116		4,512		4,521		4,564	
<b>Average</b>	32.1		32.4		32.0		31.6		30.5	

### Enrollment by Age and Level, Fall 2015

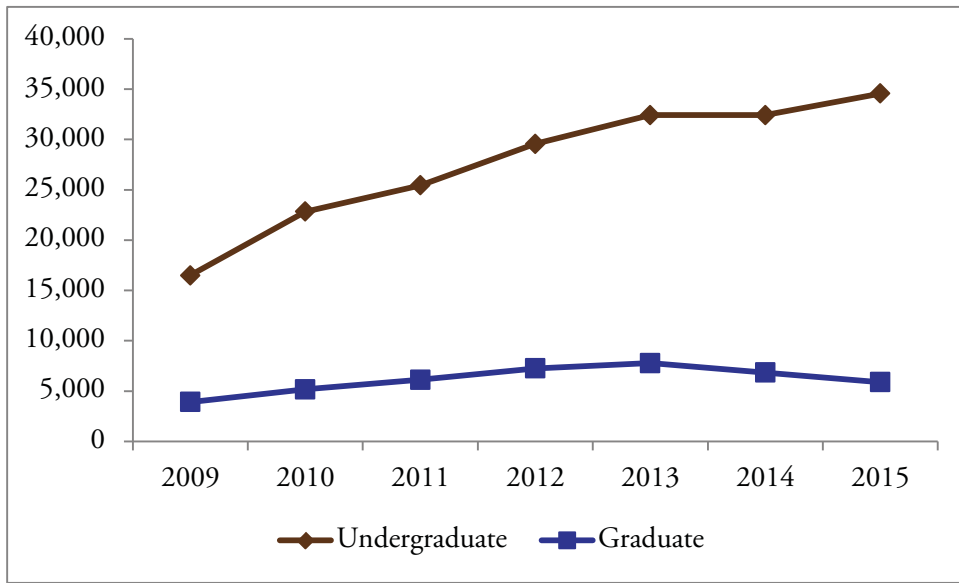
	Undergraduate		Post-baccalaureate		Graduate		Total	
	Count	Percent	Count	Percent	Count	Percent	Count	Percent
<21	110	3.08%		0.00%		0.00%	110	2.41%
21-25	1428	39.99%	6	9.52%	164	17.63%	1598	35.01%
26-30	863	24.17%	17	26.98%	231	24.84%	1111	24.34%
31-35	464	12.99%	15	23.81%	191	20.54%	670	14.68%
36-40	267	7.48%	6	9.52%	126	13.55%	399	8.74%
41-45	181	5.07%	7	11.11%	103	11.08%	291	6.38%
46-50	145	4.06%	6	9.52%	57	6.13%	208	4.56%
>50	113	3.16%	6	9.52%	58	6.24%	177	3.88%
<b>Total</b>	3,571		63		930		4,564	
<b>Average</b>	29.5		36.2		34.3		30.5	

9 Source: CBM001

**With an average age of 26 and a median age of 25, the baccalaureate program in biology has the youngest students, closely followed by undergraduate programs in mathematics and marketing. The Department of Educator & Leadership Preparation houses the programs with the oldest students--the Master of Education programs in Special Education and Bilingual Education.**

# CREDIT HOURS

## Semester Credit Hours, Fall 2009 - 2015<sup>10</sup>



10 Source: CBM004

## Semester Credit Hours by College & Level, Fall 2009 - 2015<sup>11</sup>

	2009	2010	2011	2012	2013	2014	2015
<b>Arts &amp; Sciences</b>							
Undergraduate	5,441	8,003	9,899	11,025			
Graduate	21	48	69	105			
Total	5,462	8,051	9,968	11,130			
<b>Humanities &amp; Social Sciences</b>							
Undergraduate					7,854	7,513	8,481
Graduate					84	123	102
Total					7,938	7,636	8,583
<b>Science &amp; Mathematics</b>							
Undergraduate					3,695	3,399	4,259
<b>Business</b>							
Undergraduate	5,238	6,762	6,813	8,922	10,752		
Graduate	1,060.5	1,531.5	2,164.5	2,697	2,577		
Total	6,298.5	8,293.5	8,977.5	11,619	13,329		
<b>Accounting, Computing, &amp; Finance</b>							
Undergraduate						5,058	4,746
Graduate						1,375.5	1,372.50
Total						6,433.5	6,119
<b>Management &amp; Marketing</b>							
Undergraduate						6,822	7,359
Graduate						1,171.5	1,098
Total						7,993.5	8,457
<b>Education &amp; Human Development</b>							
<b>Curriculum &amp; Kinesiology</b>							
Undergraduate	5,808	8,067	8,729	9,612	10,122		
Graduate	1,383	1,260	1,278	1,383	1,614		
Total	7,191	9,327	10,007	10,995	11,736		
<b>Leadership &amp; Counseling</b>							
Graduate	1,458	2,328	2,616	3,078	3,501		
<b>Counseling, Health, &amp; Kinesiology</b>							
Undergraduate						1,098	1,308
Graduate						2,127	1,620
Total						3,225	2,928
<b>Educator &amp; Leadership Preparation</b>							
Undergraduate						8,535	8,415
Graduate						2,049	1,698
Total						10,584	10,113
<b>Grand Total</b>							
Undergraduate	16,487	22,832	25,441	29,559	32,423	32,425	34,568
Graduate	3,922.5	5,167.5	6,127.5	7,263	7,776	6,846	5,890.50
Total	20,409.5	27,999.5	31,568.5	36,822	40,199	39,271	40,458.5

11 Based on course discipline.

## Semester Credit Hours by College, Department, Instruction Area & Level, Fall 2015<sup>12</sup>

	UGRD	GRAD	Total
<b>Arts &amp; Sciences</b>			
Humanities & Social Sciences			
Communication	384		384
Communications - Journalism	189		189
Criminology	3,630		3,630
English	888	102	990
Geography	147		147
History	1,380		1,380
Military Science	12		12
Political Science	426		426
Sociology	1,284		1,284
Women's Studies	141		141
<b>Total</b>	8,481	102	8,583
Science & Mathematics			
Biology	1,052		1,052
Chemistry	302		302
Mathematics	467		467
Psychology	2,438		2,438
<b>Total</b>	4,259		4,259
<b>Total</b>	12,740	102	12,842
<b>Business</b>			
Accounting, Computing, & Finance			
Accounting	1,494	571.5	2,065.5
Computer Information Systems	2,205	261	2,466
Computer Science	222		222
Economics	78	243	321
Finance	747	297	1,044
<b>Total</b>	4,746	1,372.5	6,118.5
Management & Marketing			
Business Administration	1,260	13.5	1,273.5
Business Communication	912		912
Business Law	696		696
Management	3,411	850.5	4,261.5
Marketing	1,080	234	1,314
<b>Total</b>	7,359	1,098	8,457
<b>Total</b>	12,105	2,470.5	14,575.5

12 Source: CBM004



**Semester Credit Hours by College, Department, Instruction Area & Level, Fall 2015 (con't.)**

	UGRD	GRAD	Total
<b>Education &amp; Human Development</b>			
Counseling, Health, & Kinesiology			
Counseling and Guidance		1,500	1,500
Health	231		231
Kinesiology	1,077	120	1,197
<b>Total</b>	<b>1,308</b>	<b>1,620</b>	<b>2,928</b>
Educator & Leadership Preparation			
Bilingual Education	1,068	117	1,185
Early Childhood	951	117	1,068
Educational Administration	3,246	324	3,570
Education	855	18	873
Education Field Experience		588	588
English as a Second Language		72	72
Reading	984	132	1,116
Special Education	1,311	330	1,641
<b>Total</b>	<b>8,415</b>	<b>1,698</b>	<b>10,113</b>
<b>Total</b>	<b>9,723</b>	<b>3,318</b>	<b>13,041</b>
<b>Grand Total</b>	<b>34,568</b>	<b>5,890.5</b>	<b>40,458.5</b>

## Semester Credit Hours by College, Department, Major, & Level, Fall 2015<sup>13</sup>

	UGRD	PB	GRAD	Total
<b>Arts &amp; Sciences</b>				
Humanities & Social Sciences				
Applied Arts & Sciences	3,793	24		3,817
Communication	903			903
Criminology	2,921	24		2,945
English	866	21	117	1,004
History	1,218	6		1,224
Political Science	343	9		352
Sociology	1,015	3		1,018
<b>Total</b>	11,059	87	117	11,263
Science & Mathematics				
Biology	1,869	3		1,872
Mathematics	385	3		388
Psychology	2,110	21		2,131
<b>Total</b>	4,364	27		4,391
<b>Total</b>	15,423	114	117	15,654
<b>Business</b>				
Accounting, Computing, & Finance				
Accounting	2,004	141	345	2,490
Computer Information Systems	891	57		948
Computer Science	363	12		375
Finance	819			819
<b>Total</b>	4,077	210	345	4,632
Management & Marketing				
Business Administration		39	2,128.5	2,167.5
General Business Administration	1,482	18		1,500
International Business Administration	420	9		429
Management	2,547			2,547
Marketing	678			678
<b>Total</b>	5,127	66	2,128.5	7,321.5
<b>Total</b>	9,204	276	2,473.5	11,953.5

13 Source: CBM001

## Semester Credit Hours by College, Department, Major, & Level, Fall 2015 (con't.)

	UGRD	PB	GRAD	Total
<b>Education &amp; Human Development</b>				
Counseling, Health, & Kinesiology				
Counseling and Guidance			1,467	1,467
Kinesiology	1,718	3	132	1,853
<b>Total</b>	1,718	3	1,599	3,320
Educator & Leadership Preparation				
Bilingual Education			222	222
Early Childhood			210	210
Educational Administration			462	462
Grades 8-12 Certification			33	33
Interdisciplinary Studies	7,734	48		7,782
Reading Specialization			138	138
Special Education			492	492
<b>Total</b>	7,734	48	1,557	9,339
<b>Total</b>	9,452	51	3,156	12,659
<b>Unknown</b>	<b>15</b>	<b>15</b>	<b>162</b>	<b>192</b>
<b>Grand Total</b>	<b>34,094</b>	<b>456</b>	<b>5,908.5</b>	<b>40,458.5</b>

## Student/Faculty Ratio, Fall 2011 - 2015

	2011	2012	2013	2014	2015
<b>FTE (12/9)</b>					
Undergraduate	2,120.1	2,463.3	2,701.9	2,702.1	2,880.7
Graduate	680.8	807.0	864.0	760.7	654.5
Total	2,800.9	3,270.3	3,565.9	3,462.8	3,535.2
S/F Ratio	20.9	22.6	23.1	21.5	22.5
<b>FTE (15/12)</b>					
Undergraduate	1,696.1	1,970.6	2,161.5	2,161.7	2,304.5
Graduate	510.6	605.3	648.0	570.5	490.9
Total	2,206.7	2,575.9	2,809.5	2,736.2	2,795.4
S/F Ratio	16.5	17.8	18.2	17.0	17.8
<b>Faculty FTE</b>	<b>133.75</b>	<b>144.5</b>	<b>154.25</b>	<b>161.375</b>	<b>157.4</b>

**Class & Semester Credit Hour Load, Fall 2010 - 2015<sup>14</sup>**

	2010	2011	2012	2013	2014	2015
<b>Class Sections Offered</b>	459	540	595	632	648	632
<b>Instruction Type</b>						
Organized*	455	534	572	602	603	587
Individual Instruction	4	6	23	30	45	45
<b>Instruction Mode</b>						
Face-to-Face	443	360	370	407	430	384.5
Online	16	52	75	74	58	57.5
Two-Way Interactive Video						
Video Tape/DVD and/or Broadcast TV						1
Multiple or Other Electronic Media			1			
Hybrid		128	149	151	160	189
<b>Average Size</b>						
Organized Class*	21.2	20.2	21.8	22.5	21.6	23.0
Undergraduate	22.1	21.0	22.4	23.7	23.3	24.8
Graduate	18.1	17.4	19.8	18.5	16.1	16.1
<b>Average SCH Load/Student</b>						
Undergraduate	9.0	8.9	8.9	8.9	8.7	8.9
Graduate	9.8	9.8	9.9	9.8	9.4	9.5
Graduate	6.5	6.5	6.4	6.5	6.4	6.4
<b>Average Class Load/Student</b>						
Undergraduate	3.1	3.0	3.0	3.1	3.0	3.0
Graduate	3.3	3.3	3.3	3.3	3.2	3.2
Graduate	2.3	2.2	2.2	2.3	2.3	2.2

\*Organized classes include those classified as lecture, laboratory, or seminar.

14 Source: CBM001 and CBM004. Face-to-face sections include HyFlex.

**Annual SCH by Level, 2009 - 2015<sup>15</sup>**

	<b>2009-10</b>	<b>2010-11</b>	<b>2011-12</b>	<b>2012-13</b>	<b>2013-14</b>	<b>2014-15</b>
<b>Fall</b>						
Undergraduate	16,508	22,832	25,441	29,559	32,423	32,425
Graduate	3,943.50	5,257.5	6,127.5	7,263	7,776	6,846
Total	20,451.5	28,089.5	31,568.5	36,822	40,199	39,271
<b>Spring</b>						
Undergraduate	18,450	22,374	25,882	27,635	31,112	31,351
Graduate	4,669.5	5,766	6,438	7,176	7,152	6,079.5
Total	23,119.5	28,140	32,320	34,811	38,264	37,431
<b>Summer</b>						
Undergraduate	6,661	7,062	6,819	8,142	8,643	9,609
Graduate	2,740.5	2,967	3,414	3,835.5	3,231	2,872.5
Total	9,401.5	10,029	10,233	11,977.5	11,874	12,482
<b>Total</b>						
Undergraduate	41,619	52,268	58,142	65,336	72,178	73,385
Graduate	11,353.5	13,990.5	15,979.5	18,274.5	18,159	15,798
Total	52,972.5	66,258.5	74,121.5	83,610.5	90,337	89,183

15 Source: CBM004

## SCH Generated by Instruction Mode, Fall 2010 - 2015<sup>16</sup>

	2010	2011	2012	2013	2014	2015
<b>Face-to-Face</b>						
Sections	443	360	370	407	430	384.5
Enrollment	9,329	6,764	7,208	8,179	7,959	7,771
SCH	27,201.5	19,762	21,306	23,751	23,349	22,697
<b>Online</b>						
Sections	16	52	75	74	58	57.5
Enrollment	336	1,487	1,991	1,914	1,483	1,440
SCH	888	4,186.5	5,571	5,496	4,167	4,504.5
<b>Video Tape/DVD and/or Broadcast TV</b>						
Sections						1
Enrollment						2
SCH						6
<b>Multiple or Other Electronic Media</b>						
Sections			1			
Enrollment			3			
SCH			9			
<b>Hybrid</b>						
Sections		128	149	151	160	189
Enrollment		2,540	3,359	3,689	3,930	4,617
SCH		7,620	9,936	10,952	11,755	13,701
<b>Total</b>						
Sections	459	540	595	632	648	631
Enrollment	9,665	10,791	12,561	13,782	13,372	13,830
SCH	28,089.5	31,568.5	36,822	40,199	39,271	40,458.5

16 Source: CBM004 and SA\_Catalog\_Schedule

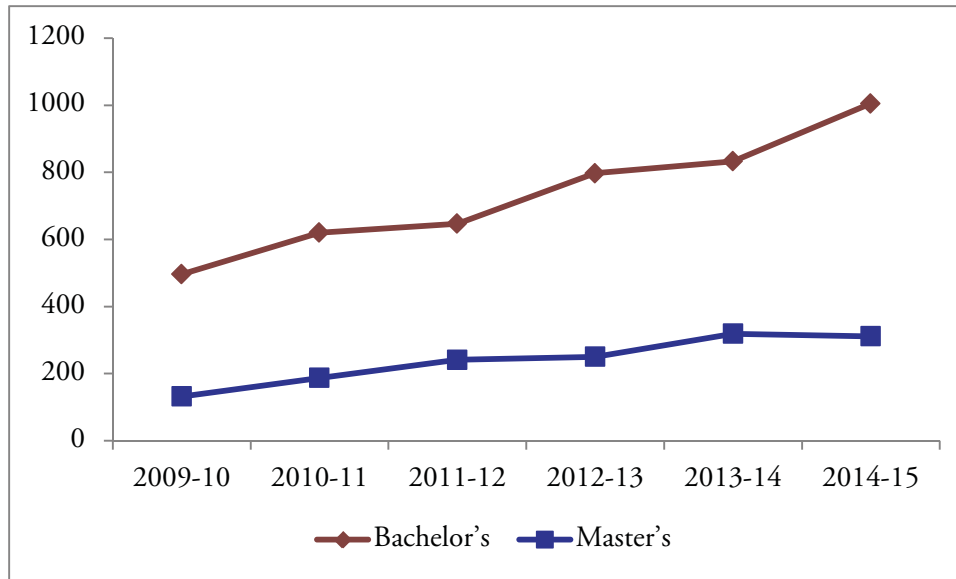
**SCH Generated by College, Department, Instruction Mode, & Level, Fall 2015<sup>17</sup>**

	UGRD		GRAD		Total	
	Sections	SCH	Sections	SCH	Sections	SCH
<b>Arts &amp; Sciences</b>						
Humanities & Social Sciences						
Face-to-Face	66.5	3,978	7	102	73.5	4,080
Online	28	2,313			28	2,313
Hybrid	28.5	2,190			28.5	2,190
Science & Mathematics						
Face-to-Face	63	3,353			63	3,353
Online	3.5	396			3.5	396
Hybrid	5.5	510			5.5	510
<b>Business</b>						
Accounting, Computing, & Finance						
Face-to-Face	33.5	2,601	3.5	285	37	2,886
Online			5	160.5	5	160.5
Hybrid	26	2,145	11.5	927	37.5	3,072
Management & Marketing						
Face-to-Face	14	1,788	1	69	15	1,857
Online	5	432	3	105	8	537
Hybrid	49	5,139	12.5	924	61.5	6,063
<b>Education &amp; Human Development</b>						
Counseling, Health, & Kinesiology						
Face-to-Face	13	1,185	27	1,086	40	2,271
Online	2	123	1	42	3	165
Hybrid			16	492	16	492
Educator & Leadership Preparation						
Face-to-Face	135.5	7,623	20.5	627	156	8,250
Online	5	312	5	171	10	483
Video Tape/DVD and/or Broadcast TV			1	6	1	6
Hybrid	8	480	32	894	40	1,374
<b>Total</b>						
Face-to-Face	325.5	20,528	59	2,169	384.5	22,697
Online	43.5	3,576	14	478.5	57.5	4,054.5
Video Tape/DVD and/or Broadcast TV			1	6	1	6
Hybrid	117	10,464	72	3,237	189	13,701

17 Source: CBM004 and SA\_Catalog\_Schedule

# DEGREES AWARDED

## Annual Degrees Conferred by Level<sup>18</sup>



**As of August 2015, 7,063 graduates had earned 7,495 degrees at A&M-San Antonio, with some graduates earning multiple degrees.**

## Annual Degrees Conferred by Level & Gender

	2010-11		2011-12		2012-13		2013-14		2014-15	
	#	%	#	%	#	%	#	%	#	%
<b>Bachelor's</b>										
Female	427	68.9%	424	65.5%	561	70.4%	562	67.5%	626	62.3%
Male	193	31.1%	223	34.5%	236	29.6%	271	32.5%	379	37.7%
<b>Master's</b>										
Female	140	74.9%	173	71.8%	164	65.6%	214	67.1%	216	69.5%
Male	47	25.1%	68	28.2%	86	34.4%	105	32.9%	95	30.5%
<b>Total</b>										
Female	567	70.3%	597	67.2%	725	69.2%	776	67.4%	842	64.0%
Male	240	29.7%	291	32.8%	322	30.8%	376	32.6%	474	36.0%

<sup>18</sup> Source: CBM009



## Annual Degrees Conferred by Level & Ethnicity<sup>19</sup>

	2010-11		2011-12		2012-13		2013-14		2014-15	
	#	%	#	%	#	%	#	%	#	%
<b>Bachelor's</b>										
Hispanic or Latino origin	406	65.5%	407	62.9%	558	70.0%	594	71.3%	681	67.8%
Not Hispanic or Latino origin	178	28.7%	198	30.6%	220	27.6%	227	27.3%	306	30.4%
Unknown	36	5.8%	42	6.5%	19	2.4%	12	1.4%	18	1.8%
<b>Master's</b>										
Hispanic or Latino origin	102	54.5%	145	60.2%	148	59.2%	200	62.7%	204	65.6%
Not Hispanic or Latino origin	67	35.8%	79	32.8%	96	38.4%	114	35.7%	102	32.8%
Unknown	18	9.6%	17	7.1%	6	2.4%	5	1.6%	5	1.6%
<b>Total</b>										
Hispanic or Latino origin	508	62.9%	552	62.2%	706	67.4%	794	68.9%	885	67.2%
Not Hispanic or Latino origin	245	30.4%	277	31.2%	316	30.2%	341	29.6%	408	31.0%
Unknown	54	6.7%	59	6.6%	25	2.4%	17	1.5%	23	1.7%

<sup>19</sup> Source: CBM009

## Annual Degrees Conferred by Level & Race<sup>20</sup>

	2010-11		2011-12		2012-13		2013-14		2014-15	
	#	%	#	%	#	%	#	%	#	%
<b>Bachelor's</b>										
White	237	38.2%	312	48.2%	446	56.0%	553	66.4%	654	65.1%
Black or African-American	34	5.5%	32	4.9%	47	5.9%	52	6.2%	59	5.9%
Asian	1	0.2%	4	0.6%	7	0.9%	5	0.6%	15	1.5%
American Indian or Alaskan Native	7	1.1%	12	1.9%	12	1.5%	10	1.2%	20	2.0%
International	3	0.5%	1	0.2%	5	0.6%	2	0.2%	11	1.1%
Native Hawaiian or Other Pacific Islander			1	0.2%	1	0.1%	1	0.1%	1	0.1%
Two or more races	5	0.8%	9	1.4%	22	2.8%	26	3.1%	33	3.3%
Unknown	333	53.7%	276	42.7%	257	32.2%	184	22.1%	212	21.1%
<b>Master's</b>										
White	71	38.0%	106	44.0%	152	60.8%	228	71.5%	217	69.8%
Black or African-American	11	5.9%	15	6.2%	18	7.2%	19	6.0%	14	4.5%
Asian		0.0%	1	0.4%	5	2.0%	9	2.8%	10	3.2%
American Indian or Alaskan Native		0.0%	2	0.8%	2	0.8%	3	0.9%	6	1.9%
International	1	0.5%	1	0.4%	2	0.8%	2	0.6%	4	1.3%
Native Hawaiian or Other Pacific Islander					1	0.4%	1	0.3%		0.0%
Two or more races	3	1.6%	7	2.9%	8	3.2%	9	2.8%	13	4.2%
Unknown	101	54.0%	109	45.2%	62	24.8%	48	15.0%	47	15.1%
<b>Total</b>										
White	308	38.2%	418	47.1%	598	57.1%	781	67.8%	871	66.2%
Black or African-American	45	5.6%	47	5.3%	65	6.2%	71	6.2%	73	5.5%
Asian	1	0.1%	5	0.6%	12	1.1%	14	1.2%	25	1.9%
American Indian or Alaskan Native	7	0.9%	14	1.6%	14	1.3%	13	1.1%	26	2.0%
International	4	0.5%	2	0.2%	7	0.7%	4	0.3%	15	1.1%
Native Hawaiian or Other Pacific Islander			1	0.1%	2	0.2%	2	0.2%	1	0.1%
Two or more races	8	1.0%	16	1.8%	30	2.9%	35	3.0%	46	3.5%
Unknown	434	53.8%	385	43.4%	319	30.5%	232	20.1%	259	19.7%

20 Source: CBM009

## Annual Degrees Conferred by College, Department, & Level

	2009-10	2010-11	2011-12	2012-13	2013-14	2014-15
<b>Arts &amp; Sciences</b>						
Bachelor's	203	253	306	366		
Master's			3	3		
Total	203	253	309	369		
<b>Humanities &amp; Social Sciences</b>						
Bachelor's					301	406
Master's					7	7
Total					308	413
<b>Science &amp; Mathematics</b>						
Bachelor's					87	94
<b>Business</b>						
Bachelor's	113	144	129	159		
Master's	20	36	76	88		
Total	133	180	205	247		
<b>Accounting, Computing, &amp; Finance</b>						
Bachelor's					66	115
Master's					17	22
Total					83	137
<b>Management &amp; Marketing</b>						
Bachelor's					104	126
Master's					103	97
Total					207	223
<b>College of Education &amp; Human Development</b>						
<b>Curriculum &amp; Kinesiology</b>						
Bachelor's	180	223	212	272		
Master's	52	50	52	51		
Total	232	273	264	323		
<b>Leadership &amp; Counseling</b>						
Master's	60	101	110	108		
<b>Counseling, Health, &amp; Kinesiology</b>						
Bachelor's					31	38
Master's					105	98
Total					136	136
<b>Educator &amp; Leadership Preparation</b>						
Bachelor's					244	226
Master's					87	87
Total					331	313
<b>Total</b>						
Bachelor's	496	620	647	797	833	1,005
Master's	132	187	241	250	319	311
Total	628	807	888	1,047	1,152	1,316

## Degrees Conferred by College, Department, Major, & Level<sup>21</sup>

	2009-10	2010-11	2011-12	2012-13	2013-14	2014-15
<b>Arts &amp; Sciences</b>						
Humanities & Social Sciences						
Applied Arts & Sciences						
Bachelor's	99	106	104	123	148	236
Master's						
Total	99	106	104	123	148	236
Communications						
Bachelor's	1	7	11	11	23	22
Master's						
Total	1	7	11	11	23	22
Criminology						
Bachelor's	22	35	51	49	66	64
Master's						
Total	22	35	51	49	66	64
English						
Bachelor's	10	18	15	28	18	22
Master's			3	3	7	7
Total	10	18	18	31	25	29
History						
Bachelor's	23	17	15	16	22	20
Master's						
Total	23	17	15	16	22	20
Political Science						
Bachelor's	3	1	3	3	3	5
Master's						
Total	3	1	3	3	3	5
Sociology						
Bachelor's	8	19	18	28	21	37
Master's						
Total	8	19	18	28	21	37
<b>Science &amp; Mathematics</b>						
Biology						
Bachelor's	1	15	27	33	29	32
Master's						
Total	1	15	27	33	29	32
Mathematics						
Bachelor's	4	1	10	7	9	9
Master's						
Total	4	1	10	7	9	9

21 Source: CBM009

## Degrees Conferred by College, Department, Major, & Level (con't.)

	2009-10	2010-11	2011-12	2012-13	2013-14	2014-15
<b>Psychology</b>						
Bachelor's	32	34	52	68	49	53
Master's						
Total	32	34	52	68	49	53
<b>Business</b>						
<b>Accounting, Computing, &amp; Finance</b>						
<b>Accounting</b>						
Bachelor's	32	29	30	33	38	70
Master's		2	10	13	17	22
Total	32	31	40	46	55	92
<b>Computer Information Systems</b>						
Bachelor's	14	8	15	23	16	19
Master's						
Total	14	8	15	23	16	19
<b>Computer Science</b>						
Bachelor's					4	5
Master's						
Total					4	5
<b>Finance</b>						
Bachelor's	5	5	10	12	8	21
Master's						
Total	5	5	10	12	8	21
<b>Management &amp; Marketing</b>						
<b>Business Administration</b>						
Bachelor's						
Master's	20	34	66	75	103	97
Total	20	34	66	75	103	97
<b>General Business Administration</b>						
Bachelor's	2	7	8	19	21	24
Master's						
Total	2	7	8	19	21	21
<b>International Business Management</b>						
Bachelor's		4	10	10	8	10
Master's						
Total		4	10	10	8	10
<b>Management</b>						
Bachelor's	52	77	49	55	59	73
Master's						
Total	52	77	49	55	59	73
<b>Marketing</b>						
Bachelor's	8	14	7	7	16	19
Master's						
Total	8	14	7	7	16	19

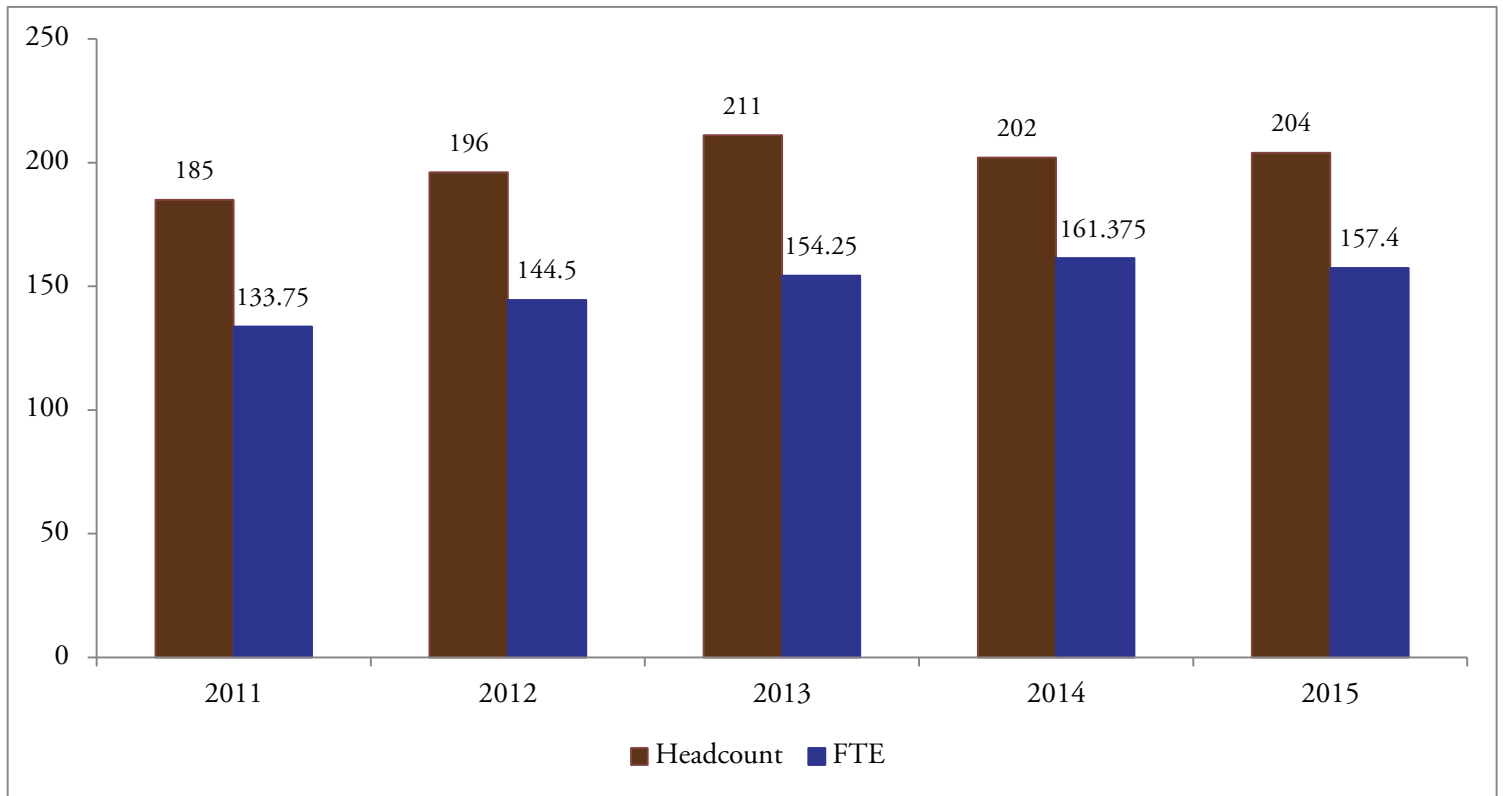
## Degrees Conferred by College, Department, Major, & Level (con't.)

	2009-10	2010-11	2011-12	2012-13	2013-14	2014-15
<b>Education &amp; Human Development</b>						
Counseling, Health, & Kinesiology						
Counseling and Guidance						
Bachelor's						
Master's	47	64	74	78	100	93
Total	47	64	74	78	100	93
Kinesiology						
Bachelor's	23	38	30	32	31	38
Master's		2	3	5	5	5
Total	23	40	33	37	36	43
Educator & Leadership Preparation						
Bilingual Education						
Bachelor's						
Master's	14	20	11	11	10	9
Total	14	20	11	11	10	9
Early Childhood						
Bachelor's						
Master's	12	7	15	9	18	19
Total	12	7	15	9	18	19
Educational Administration						
Bachelor's						
Master's	13	37	36	30	40	35
Total	13	37	36	30	40	35
Interdisciplinary Studies						
Bachelor's	157	185	182	240	244	226
Master's						
Total	157	185	182	240	244	226
Reading Specialization						
Bachelor's						
Master's	8	5	7	12	6	5
Total	8	5	7	12	6	5
Special Education						
Bachelor's						
Master's	18	16	16	14	13	19
Total	18	16	16	14	13	19
<b>Total</b>						
Bachelor's	496	620	647	797	833	1,005
Master's	132	187	241	250	319	311
Total	628	807	888	1,047	1,152	1,316

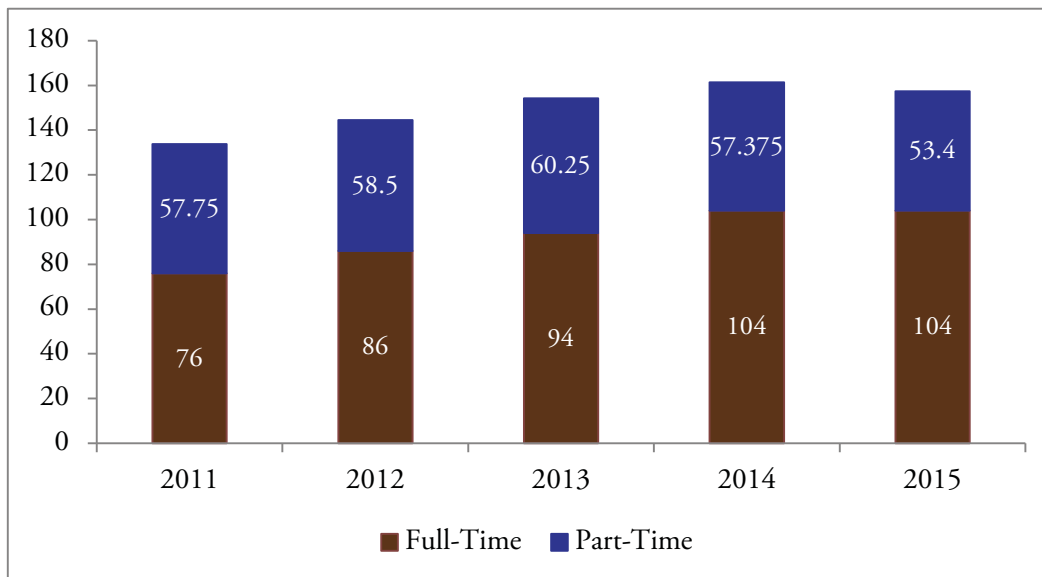
# FACULTY AND STAFF

# FACULTY

## A&M-SA Faculty, Fall 2011 - 2015<sup>22</sup>



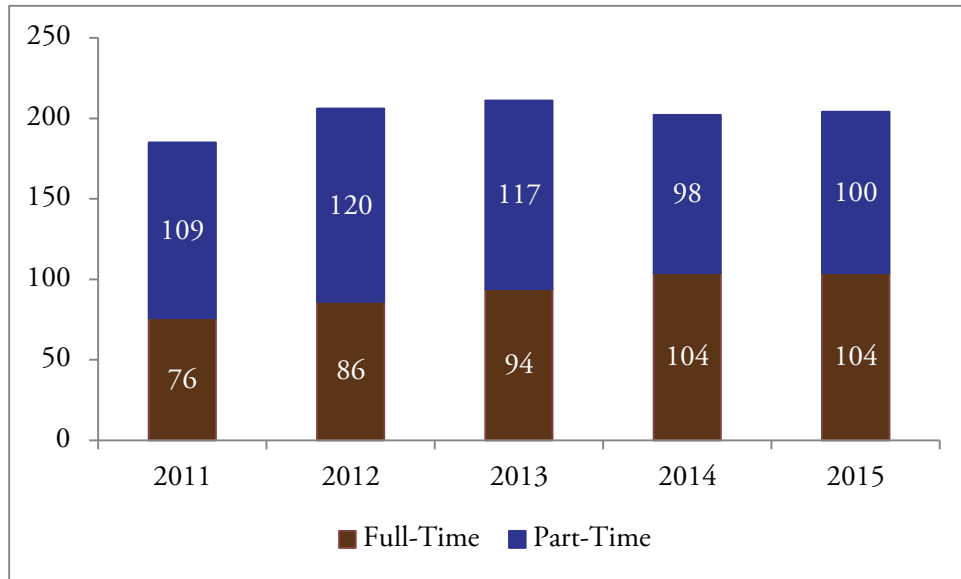
## Faculty FTE (Full-Time Equivalent), Fall 2011 - 2015<sup>22</sup>



22 Source: CBM004 and Office of the Provost.

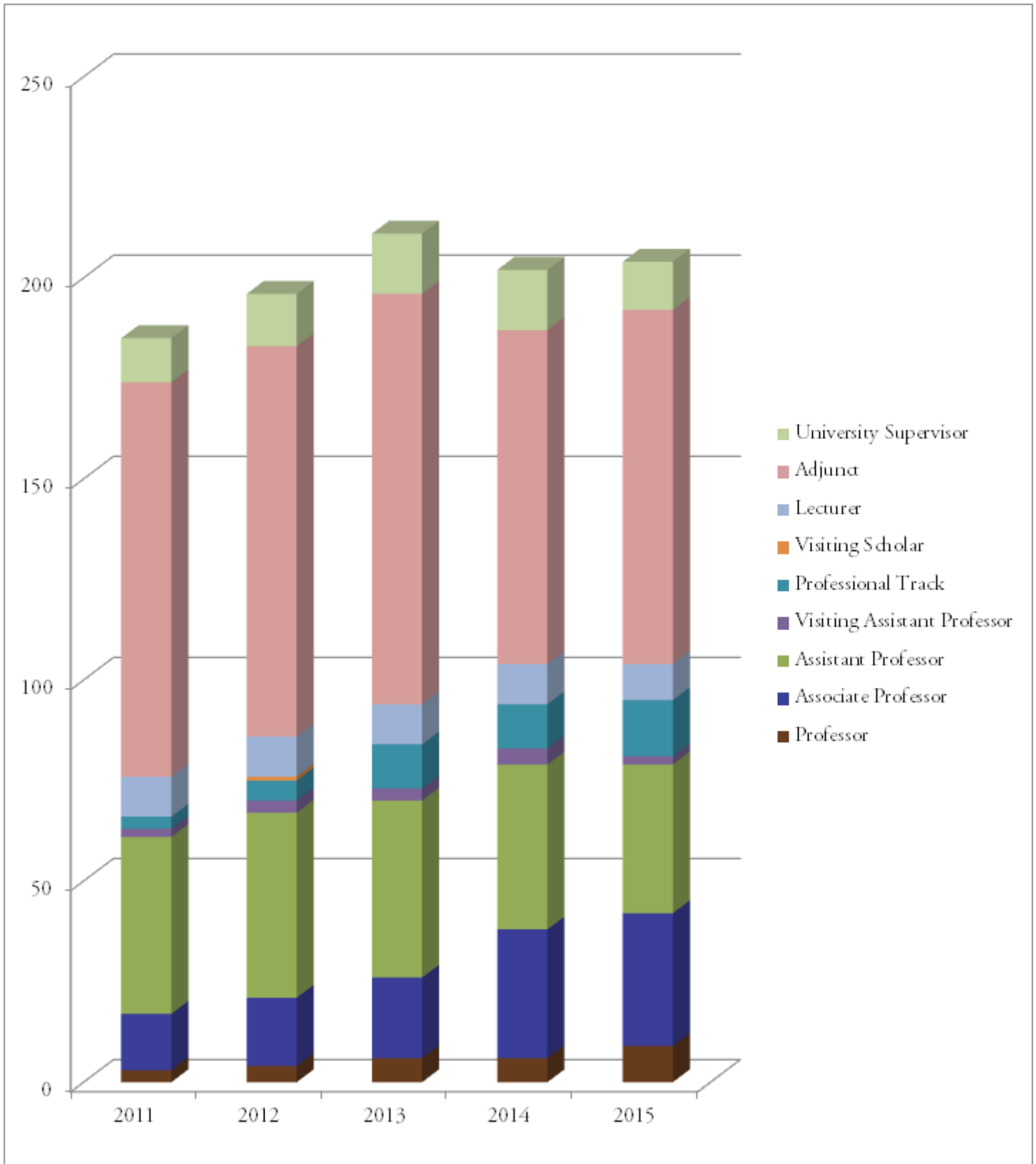


### Faculty Headcount, Fall 2011 - 2015<sup>23</sup>



23 Office of the Provost

## Faculty Headcount by Rank, Fall 2011 - 2015<sup>24</sup>



24 Source: CBM008 and Office of the Provost

## Detailed Composition of Faculty, Fall 2011 - 2015<sup>25</sup>

	2011		2012		2013		2014		2015	
	#	%	#	%	#	%	#	%	#	%
<b>School</b>										
Arts & Sciences	61	33.2%	71	36.2%						
Humanities & Social Sciences					44	20.9%	43	21.3%	44	21.6%
Science & Mathematics					25	11.8%	22	10.9%	22	10.8%
Business	45	24.5%	48	24.5%	48	22.7%				
Accounting, Computing, & Finance							22	10.9%	22	10.8%
Management & Marketing							23	11.4%	25	12.3%
Education & Human Development										
Curriculum & Kinesiology	57	31.0%	51	26.0%	64	30.3%				
Leadership & Counseling	21	11.4%	26	13.3%	30	14.2%				
Counseling, Health, & Kinesiology							22	10.9%	23	11.3%
Educator & Leadership Preparation							70	34.7%	68	33.3%
<b>Ethnicity</b>										
Hispanic or Latino origin	102	55.4%	56	28.6%	52	24.6%	44	21.8%	49	24.0%
Not Hispanic or Latino origin	8	4.3%	115	58.7%	152	72.0%	150	74.3%	146	71.6%
Not reported	74	40.2%	25	12.8%	7	3.3%	8	4.0%	9	4.4%
<b>Race</b>										
White	69	37.5%	74	37.8%	130	61.6%	131	64.9%	122	59.8%
Black or African-American	3	1.6%	3	1.5%	9	4.3%	7	3.5%	7	3.4%
Asian	3	1.6%	5	2.6%	11	5.2%	10	5.0%	16	7.8%
American Indian or Alaskan Native					1	0.5%		0.0%		0.0%
International	3	1.6%			1	0.5%	2	1.0%	1	0.5%
Unknown	106	57.6%	114	58.2%	59	28.0%	52	25.7%	58	28.4%
<b>Gender</b>										
Female	101	54.9%	107	54.6%	113	53.6%	110	54.5%	109	53.4%
Male	83	45.1%	89	45.4%	98	46.4%	92	45.5%	95	46.6%
<b>Tenure Status</b>										
Tenured	13	7.1%	20	10.2%	26	12.3%	38	18.8%	42	20.6%
Tenure Track	45	24.5%	48	24.5%	44	20.9%	41	20.3%	37	18.1%
Non-Tenured	126	68.5%	128	65.3%	141	66.8%	123	60.9%	125	61.3%
<b>Rank</b>										
Professor	3	1.6%	4	2.0%	6	2.8%	6	3.0%	9	4.4%
Associate Professor	14	7.6%	17	8.7%	20	9.5%	32	15.8%	33	16.2%
Assistant Professor	44	23.8%	46	23.5%	44	20.9%	41	20.3%	37	18.1%
Visiting Assistant Professor	2	1.1%	3	1.5%	3	1.4%	4	2.0%	2	1.0%
Professional Track	3	1.6%	5	2.6%	11	5.2%	11	5.4%	14	6.9%
Visiting Scholar			1	0.5%						
Lecturer	10	5.4%	10	5.1%	10	4.7%	10	5.0%	9	4.4%
Adjunct	98	53.0%	97	49.5%	102	48.3%	83	41.1%	88	43.1%
University Supervisor	11	5.9%	13	6.6%	15	7.1%	15	7.4%	12	5.9%
<b>Total</b>	<b>185</b>		<b>196</b>		<b>211</b>		<b>202</b>		<b>204</b>	

## Detailed Composition of Full-Time Faculty, Fall 2015<sup>26</sup>

	#	%
<b>College &amp; Department</b>		
Arts & Sciences		
Humanities & Social Sciences	20	19.2%
Science & Mathematics	12	11.5%
Business		
Accounting, Computing, & Finance	16	15.4%
Management & Marketing	14	13.5%
Education & Human Development		
Counseling, Health, & Kinesiology	11	10.6%
Educator & Leadership Preparation	31	29.8%
<b>Ethnicity</b>		
Hispanic or Latino origin	22	21.2%
Not Hispanic or Latino origin	81	77.9%
Not reported	1	1.0%
<b>Race</b>		
White	66	63.5%
Black or African-American	5	4.8%
Asian	9	8.7%
American Indian or Alaskan Native		
International	1	1.0%
Unknown	23	22.1%
<b>Gender</b>		
Female	55	52.9%
Male	49	47.1%
<b>Tenure Status</b>		
Tenured	42	40.4%
Tenure Track	37	35.6%
Non-Tenured	25	24.0%
<b>Total</b>	<b>104</b>	

26 Source: CBM008 and Office of the Provost.

## Detailed Composition of Part-Time Faculty, Fall 2015<sup>27</sup>

	#	%
<b>College &amp; Department</b>		
Arts & Sciences		
Humanities & Social Sciences	24	24.0%
Science & Mathematics	10	10.0%
Business		
Accounting, Computing, & Finance	6	6.0%
Management & Marketing	11	11.0%
Education & Human Development		
Counseling, Health, & Kinesiology	12	12.0%
Educator & Leadership Preparation	37	37.0%
<b>Ethnicity</b>		
Hispanic or Latino origin	27	27.0%
Not Hispanic or Latino origin	65	65.0%
Not reported	8	8.0%
<b>Race</b>		
White	56	56.0%
Black or African-American	2	2.0%
Asian	7	7.0%
American Indian or Alaskan Native		
International		
Unknown	35	35.0%
<b>Gender</b>		
Female	54	54.0%
Male	46	46.0%
<b>Total</b>	<b>100</b>	

<sup>27</sup> Source: CBM008 and Office of the Provost.

# STAFF

## Detailed Composition of Staff, Fall 2011 - 2015<sup>28</sup>

	2011		2012		2013		2014		2015	
	#	%	#	%	#	%	#	%	#	%
<b>Classification</b>										
Clerical	20	19.2%	24	18.9%	28	16.1%	37	18.6%	30	15.2%
Executive/Admin/Mgr	22	21.2%	24	18.9%	38	21.8%	46	23.1%	41	20.7%
Professional Non-Faculty	35	33.7%	45	35.4%	74	42.5%	81	40.7%	101	51.0%
Service/Maintenance	13	12.5%	15	11.8%	15	8.6%	14	7.0%	12	6.1%
Skilled Craft	1	1.0%	3	2.4%						
Technical/Paraprof.	13	12.5%	16	12.6%	19	10.9%	21	10.6%	14	7.0%
<b>Race/Ethnicity</b>										
White	35	33.7%	37	29.1%	51	29.3%	60	30.2%	69	34.8%
Black or African-American	5	4.8%	7	5.5%	5	2.9%	8	4.0%	7	3.5%
Hispanic	61	58.7%	77	60.6%	111	63.8%	125	62.8%	116	58.7%
Asian	1	1.0%	2	1.6%	4	2.3%	4	2.0%	4	2.0%
American Indian or Alaskan Native	1	1.0%	1	0.8%	1	0.6%	1	0.5%		
Two or more races	1	1.0%	1	0.8%	1	0.6%				
Unknown			2	1.6%	1	0.6%	1	0.5%	2	1.0%
<b>Gender</b>										
Female	65	62.5%	78	61.4%	106	60.9%	126	63.3%	133	67.2%
Male	39	37.5%	49	38.6%	68	39.1%	73	36.7%	65	32.8%
<b>Total</b>	<b>104</b>		<b>127</b>		<b>174</b>		<b>199</b>		<b>198</b>	