



TEXAS A&M UNIVERSITY
SAN ANTONIO

Fact Book
2017



TEXAS A&M UNIVERSITY
SAN ANTONIO

Fact Book 2017

Office of Institutional Research
Office of the Provost
One University Way
San Antonio, TX 78224

Table of Contents

History.....6

Mission.....6

University Accreditation.....6

University Profile, Fall 20177

Texas A&M University System Board of Regents, 2017 - 2018.....8

A&M-SA Executive Team, 2017 - 20189

Faculty Senate, 2017 - 20189

Staff Council, 2017 - 201810

Student Government Association, 2017 - 201810

Organizational Chart.....11

Degree Programs, 2017 - 2018.....12

Admissions16

Enrollment18

Credit Hours.....30

Degrees Awarded42

Faculty.....52

Staff59

General Information

History

Established as the Texas A&M University-Kingsville System Center-San Antonio in January 2000, A&M-SA was created as a stand-alone university on May 23, 2009. A&M-SA meets the criteria for a Four-Year 5 SREB institution and offers 37 programs leading to baccalaureate and master's degrees. For more information, please visit www.tamusa.edu.

Mission

Texas A&M University-San Antonio faculty and staff prepare and empower students through innovative and challenging academic and co-curricular programs that contribute to and enrich the economic and social development of the community and region. A solid foundation for success is established through dynamic teaching, scholarship, research, and public service that inspire graduates to lifelong learning and responsible global citizenship.

University Accreditation

Texas A&M University-San Antonio is accredited by the Southern Association of Colleges and Schools Commission on Colleges to award baccalaureate and master's degrees. Contact the Commission on Colleges at 1866 Southern Lane, Decatur, Georgia 30033-4097 or call (404) 679-4500 for questions about the accreditation of Texas A&M University-San Antonio.

University Profile, Fall 2017

Established	2009
President	Dr. Cynthia Teniente Matson
Enrollment	6,460 (5422.3 FTE*)
Faculty	329 (227.1 FTE)
Staff	230
Colleges	College of Arts & Sciences College of Business College of Education & Human Development
Degree Programs	37
Annual Degrees Awarded	1,396
Budget	\$73,034,807
Endowment	\$305,820
Annual Tuition & Fees	\$6,681**

*FTE student: 12 SCH per undergraduate, 9 SCH per graduate

**Based on two semesters for a new full-time (12 SCH per semester) in-state undergraduate student

Texas A&M University System Board of Regents, 2017 - 2018

Officers FY2018

- Charles Schwartz, Chairman, Board of Regents
- Elaine Mendoza, Vice Chairman, Board of Regents

Member(s) with term set to expire on February 1, 2019

- Anthony G. Buzbee
- Morris E. Foster
- Charles Schwartz

Member(s) with term set to expire February 1, 2021

- Phil Adams
- Robert L. Albritton
- William “Bill” Mahomes, Jr.

Member(s) with term set to expire on February 1, 2023

- Tim Leach
- Elaine Mendoza
- Cliff Thomas

Member(s) with term set to expire May 31, 2018

- Stephen Shuchart

Office of the Board of Regents

Texas A&M University
P.O. Box 15812
College Station, TX 77841-5013

(979) 845-9600

Vickie Spillers, Executive Director
vickie@tamus.edu

Jackie Bell
Assistant to the Board of Regents
jbelle@tamus.edu

A&M-SA Executive Team, 2017 - 2018

Cynthia Teniente Matson	President
Michael O'Brien	Provost and Vice President for Academic Affairs
William Spindle	Vice President for Business Affairs/CFO
Melissa Mahan	Vice President for Student Affairs
Richard Ortega	Vice President for Institutional Advancement

Faculty Senate, 2017 - 2018

President:	Amy Porter, Associate Professor of History
Vice President/President Elect:	Claire Nolasco, Assistant Professor of Criminology
Secretary:	Jennifer Wilson, Associate Professor of Reading
Parliamentarian:	Douglas Carter, Assistant Professional Track of Management
Senators:	Andrew Sanders, Assistant Professor of Political Science
	Ann Bliss, Associate Professor of English
	Bob Shelton, Assistant Professor of Chemistry
	Caroline O'Quinn, Assistant Professor Education
	Dan Glaser, Associate Professor of Management
	Deirdre McDonald, Education Librarian
	Gilbert Barrera, Assistant Professional Track of Accounting
	Jack Ayers, Assistant Professor of English
	Keming Li, Assistant Professor of Finance
	Lawrence Scott, Assistant Professor of Educational Administration
	Marina Narvaez, Business Librarian
	Robert Vinaja, Assistant Professional Track of Computer Information Systems
	Robin Kapavik, Associate Professor of Curriculum & Instruction
	Rodolfo Valdez, Assistant Professor of Biology
	Scott Peters, Associate Professor of Counseling & Guidance
	Sukho Lee, Associate Professor Kinesiology
	Wanyu Zang, Assistant Professor of Computer Information Systems

Staff Council, 2017 - 2018

President:	Arturo Olague, Director, Recreational Sports
Vice President:	Brandon Oliver, Creative Design Manager
Treasurer:	Teresa Petersen, Executive Assistant to Vice President of Student Affairs
Secretary:	Kim Nanez, Director, Student Success
Parliamentarian:	Lucilla Vasquez, Admissions Counselor II

Student Government Association, 2017 - 2018

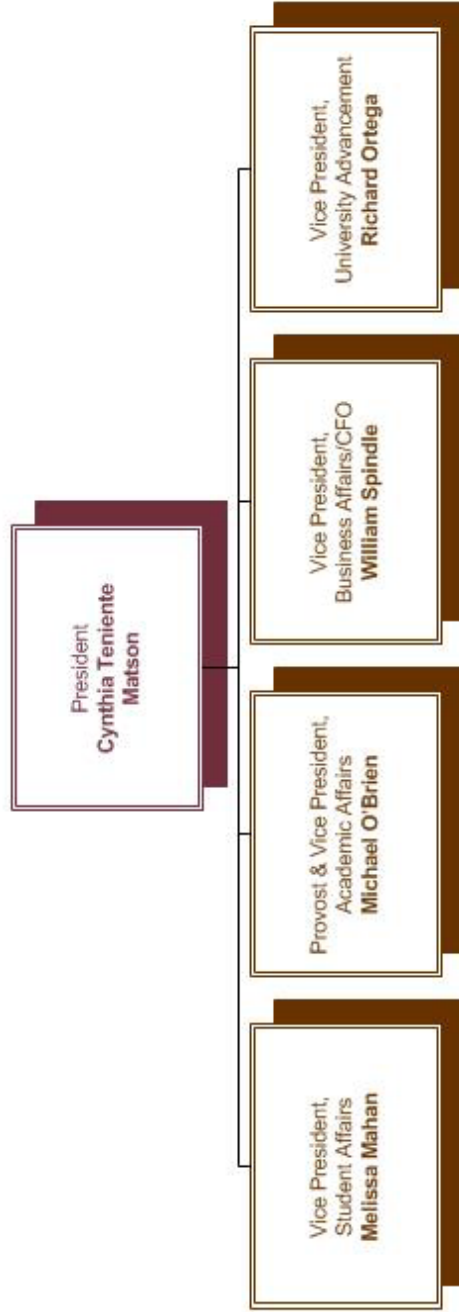
President:	Mary Walker, Arts & Sciences
Vice President:	Haidee Salazar, Arts & Sciences
Secretary:	Caitlyn Spencer, Business
Justices:	Miguel Castro, Arts & Sciences Carlos Manjarrez, Business
Esperanza Hall Senator	Gustavo De La Fuente, Arts & Sciences Autumn Kahanek, Arts & Sciences
Freshman Senator	Anyssa Valle, Business
Graduate Student Senator	Juan Ramirez, Business
Senator and Speaker of the Senate	Kali Zimmerman, Arts & Sciences
Senators:	Danielle Bitner, Education & Human Development Starla Blake, Arts & Sciences Clifford Crews, Education & Human Development Christopher Dodd, Arts & Sciences Krystal Garza, Arts & Sciences Vanessa Huitron, Arts & Sciences Marissa Lyssy, Business Sean Saul, Arts & Sciences Ujjaggar Sihan, Arts & Sciences

Organizational Chart



TEXAS A&M UNIVERSITY
SAN ANTONIO

Texas A&M University-San Anton
Office of the President
January 20, 2017



Legend

Maroon = University President
Brown = Executive Team (ET)

Degree Programs, 2017 - 2018¹

Program	CIP Code	Degree Levels	
		Baccalaureate	Master's
COLLEGE OF ARTS & SCIENCES			
DEPARTMENT OF ARTS & HUMANITIES			
COMMUNICATIONS	09.0100.00	BA (120 SCH) Start date: 07/30/2009	
SPANISH	16.0905.00	BA (120 SCH) Start date: 04/18/2012	
ENGLISH	23.0101.00	BA (120 SCH) Start date: 07/30/2009	MA MS Start date: 07/30/2009
HISTORY	54.0101.00	BA (120 SCH) Start date: 07/30/2009	
DEPARTMENT OF SCIENCE & MATHEMATICS			
BIOLOGY	26.0101.00	BA (120 SCH) BS (120 SCH) Start date: 07/30/2009	
MATHEMATICS	27.0101.00	BA (120 SCH) BS (120 SCH) Start date: 07/30/2009	
PSYCHOLOGY	42.0101.00	BA (120 SCH) BS (120 SCH) Start date: 07/30/2009	
WATER RESOURCES AND TECHNOLOGY	40.0605.00		MS (36 SCH) Start date: 08/01/2017
DEPARTMENT OF SOCIAL SCIENCES			
APPLIED ARTS & SCIENCES	30.9999.40	BAAS (120 SCH) Start date: 07/30/2009	
CRIMINOLOGY 2018 Being phased out	45.0401.00	BS (120 SCH) Start date: 07/30/2009	
CRIMINOLOGY & CRIMINAL JUSTICE	45.0401.00	BS (120 SCH) Start date: 07/30/2009	

¹ Source: The Texas Higher Education Coordinating Board University Program Inventory (<http://www.theccb.state.tx.us/apps/programinventory/>)

Degree Programs, 2017-2018 (con't.)

Program	CIP Code	Degree Levels	
		Baccalaureate	Master's
POLITICAL SCIENCE	45.1001.00	BA (120 SCH) Start date: 07/30/2009	
SOCIOLOGY	45.1101.00	BA (120 SCH) Start date: 07/30/2009	
COLLEGE OF BUSINESS			
DEPARTMENT OF ACCOUNTING & FINANCE			
ACCOUNTING	52.0301.00	BBA (120 SCH) Start date: 07/30/2009	MPA (30 SCH) Start date: 01/17/2011
FINANCE	52.0801.00	BBA (120 SCH) Start date: 07/30/2009	
DEPARTMENT OF COMPUTING & CYBER-SECURITY			
COMPUTER SCIENCE	11.0701.00	BS (120 SCH) Start date: 09/06/2011	
COMPUTER INFORMATION SYSTEMS	52.1201.00	BBA (120 SCH) Start date: 07/30/2009	
DEPARTMENT OF MANAGEMENT & MARKETING			
GENERAL BUSINESS ADMINISTRATION	52.0101.00	BBA (120 SCH) Start date: 07/30/2009	
BUSINESS ADMINISTRATION	52.0201.00		MBA (36 SCH) Start date: 07/30/2009
MANAGEMENT	52.0201.00	BBA (120 SCH) Start date: 07/30/2009	
INTERNATIONAL BUSINESS MANAGMENT	52.1101.00	BBA (120 SCH) Start date: 07/30/2009	
MARKETING	52.1401.00	BBA (120 SCH) Start date: 07/30/2009	

Degree Programs, 2017-2018 (con't.)

Program	CIP Code	Degree Levels	
		Baccalaureate	Master's
COLLEGE OF EDUCATION & HUMAN DEVELOPMENT			
DEPARTMENT OF COUNSELING, HEALTH & KINESIOLOGY			
COUNSELING & GUIDANCE	13.1101.00		MA (36 SCH) MS (36 SCH) Start date: 07/30/2009
KINESIOLOGY	31.0505.00	BS (120 SCH) Start date: 07/30/2009	MS Start date: 07/30/2009
CLINICAL MENTAL HEALTH COUNSELING	42.2803.00		MA (60 SCH) Start date: 09/01/2017
MARRIAGE & FAMILY THERAPY 2018 Being phased out	51.1505.00		MA (60 SCH) Start date: 08/15/2016
MARRIAGE AND FAMILY COUNSELING	51.1505.00		MA (60 SCH) Start date: 08/15/2016
COMMUNITY HEALTH 2022 Being phased out	51.2208.00	BS (120 SCH) Start date: 08/15/2016	
DEPARTMENT OF EDUCATOR & LEADERSHIP PREPARATION			
BILINGUAL EDUCATION	13.0201.00		MA (36 SCH) MS (36 SCH) Start date: 07/30/2009
EDUCATIONAL ADMINISTRATION	13.0401.00		MA (36 SCH) MS (36 SCH) Start date: 07/30/2009
SPECIAL EDUCATION	13.1001.00		MED (36 SCH) Start date: 07/30/2009
EARLY CHILDHOOD	13.1210.00		MED (36 SCH) Start date: 07/30/2009
READING SPECIALIZATION	13.1315.00		MS (36 SCH) Start date: 07/30/2009
CHILD DEVELOPMENT	19.0706.00	BS (120 SCH) Start date: 08/15/2017	
DEPARTMENT OF CURRICULUM AND INSTRUCTION			
INTERDISCIPLINARY STUDIES	30.9999.01	BS (120 SCH) Start date: 07/30/2009	

Student Information

Admissions

Admission Data by Level, Fall 2013 - 2017¹

	2013		2014		2015		2016		2017	
	Count	Percent Conversion	Count	Percent Conversion	Count	Percent Conversion	Count	Percent Conversion	Count	Percent Conversion
Undergraduate										
Applied	2,189		2,222		2,712		7,896		10,278	
Accepted	1,881	86%	1,678	76%	2,301	85%	4,066	51%	4,579	45%
Enrolled	1,061	56%	965	58%	1,122	49%	1,964	48%	1,779	39%
Post-Baccalaureate										
Applied	61		67		70		73		84	
Accepted	57	93%	52	78%	65	93%	65	89%	67	80%
Enrolled	19	33%	23	44%	32	49%	34	52%	24	36%
Graduate										
Applied	750		736		748		832		846	
Accepted	601	80%	550	75%	541	72%	520	63%	526	63%
Enrolled	314	52%	296	54%	272	50%	364	70%	304	58%
Total										
Applied	2,307		2,341		2,847		8,861		11,208	
Accepted	1,957	85%	1,753	75%	2,398	84%	4,644	53%	5,172	46%
Enrolled	1,080	55%	988	56%	1,154	48%	2,362	51%	2,107	41%

First-Time-In-College Admission, Fall 2017²

	Count	Percent Conversion
Applied	6,932	
Accepted	2,389	34%
Enrolled	577	24%

¹ Source: FactbookApplications.sql. In order to be consistent with reporting standards of both the Texas Higher Education Coordinating Board and the National Center for Data Statistics, these numbers include applications filed during the preceding summers and only count applications which were complete enough to consider for admission.

² Does not include freshmen transfers.

Fall 2017 Admission by College and Level³

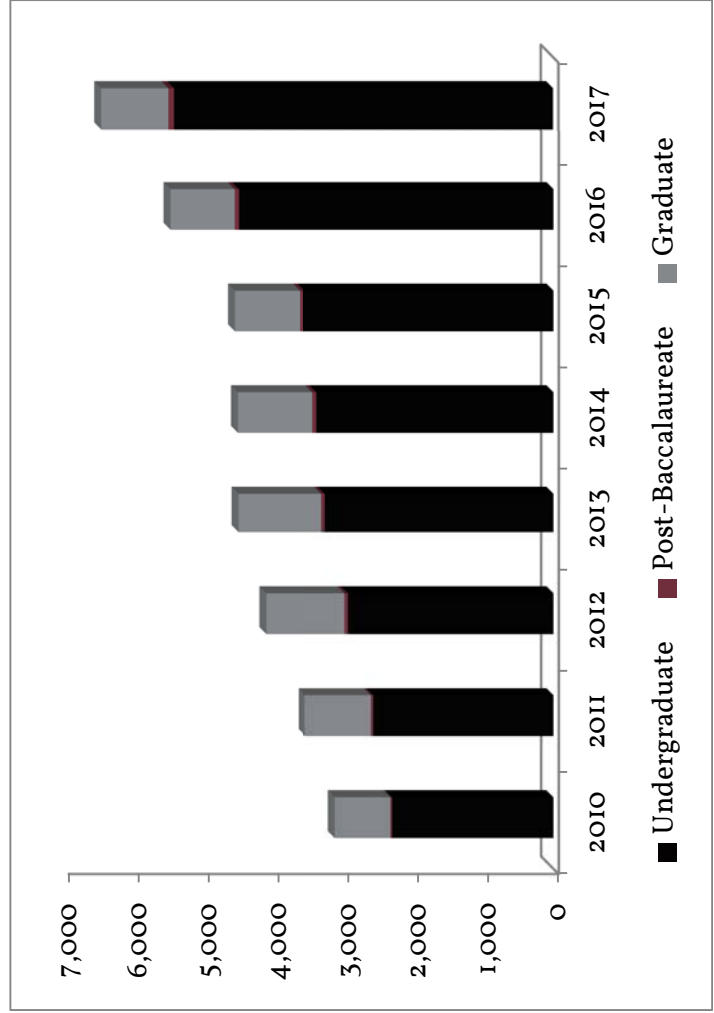
	Applied	Accepted	Enrolled
Arts & Sciences			
Arts & Humanities			
Undergraduate	684	347	157
Post-Baccalaureate	11	8	2
Graduate	20	8	4
Science & Mathematics			
Undergraduate	2924	1162	363
Post-Baccalaureate	23	22	5
Social Sciences			
Undergraduate	1768	799	344
Post-Baccalaureate	7	6	3
Undeclared			
Undergraduate			42
Business			
Accounting & Finance			
Undergraduate	235	182	109
Post-Baccalaureate	22	20	9
Graduate	62	38	29
Computing & Cyber Security			
Undergraduate	697	255	106
Post-Baccalaureate	4	2	1
Management & Marketing			
Undergraduate	535	364	195
Post-Baccalaureate	8	3	2
Graduate	303	221	131
Undeclared			
Undergraduate			101
Graduate			3
Education & Human Development			
Counseling, Health & Kinesiology			
Undergraduate	1042	427	140
Post-Baccalaureate	4	3	1
Graduate	201	112	62
Educator & Leadership Preparation			
Undergraduate	374	287	166
Post-Baccalaureate	5	3	1
Graduate	191	118	67
Undeclared			
Undergraduate			54
Graduate			8
Unknown			
Undergraduate	2014	754	
Post-Baccalaureate			
Graduate	69	29	

Enrollment by Level Fall 2010 - 2017⁴

	2010		2011		2012		2013		2014		2015		2016		2017	
	#	%	#	%	#	%	#	%	#	%	#	%	#	%	#	%
Undergraduate	2,324	74.5%	2,604	73.3%	2,983	72.5%	3,316	73.5%	3,444	76.2%	3,634	79.6%	4,568	83.4%	5,499	85.1%
Graduate	796	25.5%	950	26.7%	1,133	27.5%	1,196	26.5%	1,077	23.8%	930	20.4%	906	16.6%	961	14.9%
Total	3,120		3,554		4,116		4,512		4,521		4,564		5,474		6,460	

Enrollment by Coordinating Board Classification Fall 2010 - 2017

	2010		2011		2012		2013		2014		2015		2016		2017	
	#	%	#	%	#	%	#	%	#	%	#	%	#	%	#	%
Undergraduate	2,301	73.75%	2,569	72.28%	2,931	71.21%	3,264	72.34%	3,386	74.89%	3,571	78.24%	4,507	82.3%	5,417	83.9%
Post-Baccalaureate	23	0.74%	35	0.98%	52	1.26%	52	1.15%	58	1.28%	63	1.38%	61	1.1%	82	1.3%
Graduate	796	25.51%	950	26.73%	1,133	27.53%	1,196	26.51%	1,077	23.82%	930	20.38%	906	16.6%	961	14.9%
Total	3,120		3,554		4,116		4,512		4,521		4,564		5,474		6,460	



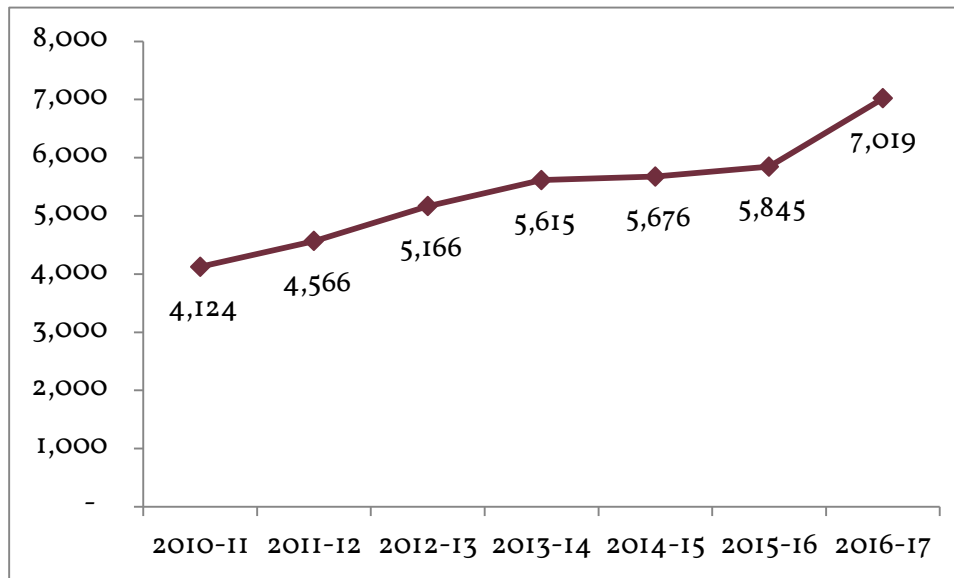
A&M-SA's enrollment has grown by 176% since 2009.

⁴ Source: CBM001. Each student is counted once regardless of number of enrolled courses.

Annual Enrollment by Level⁵

	2010-2011	2011-2012	2012-2013	2013-2014	2014-2015	2015-2016	2016-2017
Fall							
Undergraduate	2,301	2,569	2,931	3,264	3,386	3,571	4,507
Post-Baccalaureate	23	35	52	52	58	63	61
Graduate	796	950	1,133	1,196	1,077	930	906
Total	3,120	3,554	4,116	4,512	4,521	4,564	5,474
Spring							
Undergraduate	2,348	2,573	2,778	3,155	3,219	3,508	4,482
Post-Baccalaureate	27	39	48	53	47	55	75
Graduate	866	988	1,100	1,100	941	861	900
Total	3,241	3,600	3,926	4,308	4,207	4,424	5,457
Summer							
Undergraduate	1,033	1,028	1,249	1,332	1,463	1,633	2,027
Post-Baccalaureate	15	17	16	19	22	28	43
Graduate	477	565	636	575	459	513	641
Total	1,525	1,610	1,901	1,926	1,944	2,174	2,711

Annual Unduplicated Enrollment⁶

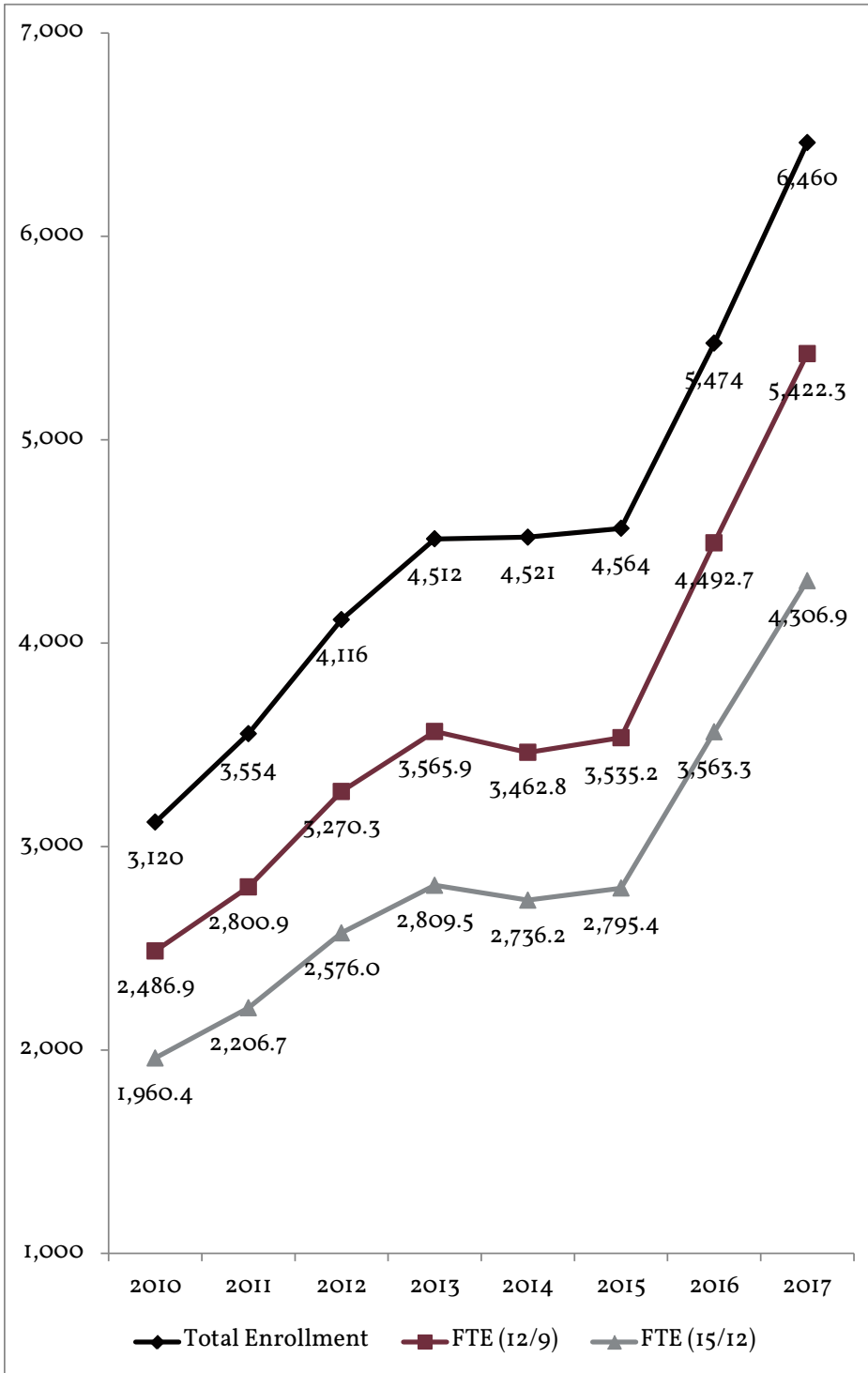


⁵ Source: CBMoor.

⁶ Students who enrolled in more than one semester of the academic year are counted only once in this total.

FTE Enrollment, Fall 2010 - 2017

	2010	2011	2012	2013	2014	2015	2016	2017
Total Enrollment	3,120	3,554	4,116	4,512	4,521	4,564	5,474	6,460
FTE (12/9)	2,486.9	2,800.9	3,270.3	3,565.9	3,462.8	3,535.2	4,492.7	5,422.3
FTE (15/12)	1,960.4	2,206.7	2,576.0	2,809.5	2,736.2	2,795.4	3,563.3	4,306.9



The College of Arts & Sciences added two departments in 2013, and a third in 2016. In 2014, the College of Business added two departments, and a third in 2016. In 2014, the College of Education & Human Development reorganized its departments; it subsequently added a department in 2017, which will be reflected in the Fall 2018 Fact Book. Departments in *italics* have been eliminated.

Over two-thirds of A&M-SA's students identify as Hispanic or Latino.

FTE (12/9) is based on 12 SCH per undergraduate student and 9 SCH per graduate student.

FTE (15/12) is based on 15 SCH per undergraduate student and 12 SCH per graduate student.

Detailed Composition of Student Body, Fall 2013 - 2017⁷

	2013		2014		2015		2016		2017	
	#	%	#	%	#	%	#	%	#	%
Attendance Status										
Full-Time	1,703	37.7%	1,720	38.0%	1,778	39.0%	2,541	46.4%	3,194	49.4%
Part-Time	2,809	62.3%	2,801	62.0%	2,786	61.0%	2,933	53.6%	3,266	50.6%
Enrollment by College										
Arts & Sciences										
Arts & Humanities							409	7.5%	552	8.5%
Humanities & Social Sciences	1,077	23.9%	1,180	26.1%	1,237	27.1%				
Science & Mathematics	428	9.5%	415	9.2%	468	10.3%	742	13.6%	886	13.7%
Social Sciences							1,005	18.4%	1,136	17.6%
Business										
Accounting, Computing, & Finance			533	11.8%	523	11.5%				
Accounting & Finance							432	7.9%	548	8.5%
Computing & Cyber Security							168	3.1%	249	3.9%
Management & Marketing			840	18.6%	870	19.1%	1,031	18.8%	1,283	19.9%
Education & Human Development										
Counseling, Health, & Kinesiology			482	10.7%	438	9.6%	509	9.3%	572	8.9%
Curriculum & Kinesiology	1,159	25.7%								
Educator & Leadership Preparation			1,047	23.2%	996	21.8%	1,121	20.5%	1,193	18.5%
Leadership & Counseling	514	11.4%								
Unknown	24	0.5%	24	0.5%	32	0.7%	57	1.0%	41	0.6%
Gender										
Female	2,970	65.8%	2,907	64.3%	2,917	63.9%	3,461	63.2%	3,936	60.9%
Male	1,542	34.2%	1,614	35.7%	1,647	36.1%	2,013	36.8%	2,524	39.1%
Race										
American Indian or Alaskan Native	90	2.0%	108	2.4%	104	2.3%	116	2.1%	163	2.5%
Asian	69	1.5%	65	1.4%	66	1.5%	106	1.9%	117	1.8%
Black or African-American	283	6.3%	294	6.5%	293	6.4%	421	7.7%	494	7.7%
International	30	0.7%	42	0.9%	49	1.1%	93	1.7%	88	1.4%
Multiracial	120	2.7%	163	3.6%	157	3.4%	190	3.5%	292	4.5%
Native Hawaiian or Other Pacific Islander	7	0.2%	5	0.1%	9	0.2%	16	0.3%	21	.33%
Unknown or Not Reported	963	21.3%	893	19.8%	870	19.1%	947	17.3%	1,143	17.7%
White	2,950	65.4%	2,951	65.3%	3,016	66.1%	3,585	65.5%	4,142	64.1%
Ethnicity										
Hispanic or Latino	3,052	67.64%	3,026	66.93%	3,071	67.29%	3,837	70.1%	4,535	70.2%
Not Hispanic or Latino	1,378	30.54%	1,425	31.52%	1,443	31.62%	1,574	28.8%	1,841	28.5%
Unreported	82	1.82%	70	1.55%	50	1.10%	63	1.2%	84	1.3%
Total Enrollment	4,512		4,521		4,564		5,474		6,460	

78% of enrolled students report that they are the first generation in their families to attend college.

17% of enrolled students report a personal or immediate family affiliation with a branch of the military.

⁷ Source: CBMOOI. As of fall 2012, the Texas Higher Education Coordinating Board had disaggregated the reporting of race and ethnicity. Because of this shift in reporting, the total for all races prior to fall 2012 will be less than the total enrollment for those years.

Detailed Composition of Undergraduate Student Body, Fall 2013 - 2017

	2013		2014		2015		2016		2017	
	#	%	#	%	#	%	#	%	#	%
Attendance Status										
Full-Time	1,513	45.6%	1,444	41.9%	1,536	42.3%	2,328	51.0%	3,009	54.7%
Part-Time	1,803	54.4%	2,000	58.1%	2,098	57.7%	2,240	49.0%	2,490	45.3%
Enrollment by College										
Arts & Sciences										
Arts & Humanities							392	8.6%	533	9.7%
<i>Humanities & Social Sciences</i>	1,061	32.0%	1,160	33.7%	1,218	33.5%				
Science & Mathematics	428	12.9%	415	12.1%	468	12.9%	742	16.2%	886	16.1%
Social Sciences							1,005	22.0%	1,136	20.7%
Business										
<i>Accounting, Computing, & Finance</i>			476	13.8%	461	12.7%				
Accounting & Finance							344	7.5%	465	8.5%
Computing & Cyber Security							168	3.7%	249	4.5%
Management & Marketing			478	13.9%	527	14.5%	711	15.6%	869	15.8%
Education & Human Development										
Counseling, Health, & Kinesiology			173	5.0%	199	5.5%	289	6.3%	376	6.8%
<i>Curriculum & Kinesiology</i>	929	28.0%								
Educator & Leadership Preparation			732	21.3%	757	20.8%	902	19.7%	967	17.6%
<i>Leadership & Counseling</i>										
Unknown	8	0.2%	10	0.3%	4	0.1%	15	0.3%	18	0.3%
Gender										
Female	2,161	65.2%	2,182	63.4%	2,311	63.6%	2,862	62.7%	3,319	60.4%
Male	1,155	34.8%	1,262	36.6%	1,323	36.4%	1,706	37.3%	2,180	39.6%
Race										
American Indian or Alaskan Native	72	2.2%	88	2.6%	94	2.6%	109	2.4%	148	2.7%
Asian	40	1.2%	44	1.3%	49	1.4%	84	1.8%	91	1.7%
Black or African-American	203	6.1%	215	6.2%	223	6.1%	350	7.7%	408	7.4%
International	21	0.6%	30	0.9%	35	1.0%	78	1.7%	73	1.3%
Multiracial	90	2.7%	127	3.7%	133	3.7%	158	3.5%	246	4.5%
Native Hawaiian or Other Pacific Islander	6	0.2%	5	0.2%	7	0.2%	15	0.3%	17	.3%
Unknown or Not Reported	771	23.3%	740	21.5%	743	20.5%	837	18.3%	1011	18.4%
White	2,113	63.7%	2,195	63.7%	2350	64.7%	2,937	64.3%	3505	63.7%
Ethnicity										
Hispanic or Latino	2,282	68.8%	2,342	68.0%	2,504	68.9%	3,275	71.7%	3960	72.0%
Not Hispanic or Latino	969	29.2%	1,050	30.5%	1,092	30.1%	1,249	27.3%	1504	27.4%
Unreported	65	2.0%	52	1.5%	38	1.1%	44	1.0%	35	.6%
Total Enrollment	3,316		3,444		3,634		4,568		5,499	

Detailed Composition of Graduate Student Body, Fall 2013 - 2017

	2013		2014		2015		2016		2017	
	#	%	#	%	#	%	#	%	#	%
Attendance Status										
Full-Time	339	28.3%	276	25.6%	242	26.0%	213	23.5%	185	19.3%
Part-Time	857	71.7%	801	74.4%	688	74.0%	693	76.5%	776	80.7%
Enrollment by College										
Arts & Sciences										
Arts & Humanities							17	1.9%	19	2.0%
Humanities & Social Sciences	16	1.3%	20	1.9%	19	2.0%				
Science & Mathematics										
Social Sciences										
Business										
Accounting, Computing, & Finance			57	5.3%	62	6.7%				
Accounting & Finance							84	9.3%	83	8.6%
Computing & Cyber Security										
Management & Marketing			362	33.6%	343	36.9%	324	35.8%	414	43.1%
Education & Human Development										
Counseling, Health, & Kinesiology			309	28.7%	239	25.7%	220	24.3%	196	20.4%
Curriculum & Kinesiology	230	19.2%								
Educator & Leadership Preparation			315	29.3%	239	25.7%	219	24.2%	226	23.5%
Leadership & Counseling	514	43.0%								
Unknown	16	1.3%	14	1.3%	28	3.0%	42	4.6%	23	2.3%
Gender										
Female	809	67.6%	725	67.3%	606	65.2%	599	66.1%	617	64.2%
Male	387	32.4%	352	32.7%	324	34.8%	307	33.9%	344	35.8%
Race										
American Indian or Alaskan Native	18	1.5%	20	1.9%	10	1.1%	7	0.8%	15	1.6%
Asian	29	2.4%	21	2.0%	17	1.8%	22	2.4%	26	2.7%
Black or African-American	80	6.7%	79	7.3%	70	7.5%	71	7.8%	86	8.9%
International	9	0.8%	12	1.1%	14	1.5%	15	1.7%	15	1.6%
Multiracial	30	2.5%	34	3.2%	24	2.6%	32	3.5%	46	4.8%
Native Hawaiian or Other Pacific Islander	1	0.1%	0	0.0%	2	0.2%	1	0.1%	4	.4%
Unknown or Not Reported	192	16.1%	155	14.4%	127	13.7%	110	12.1%	132	13.7%
White	837	70.0%	756	70.2%	666	71.6%	648	71.5%	637	66.3%
Ethnicity										
Hispanic or Latino	770	64.4%	684	63.5%	567	61.0%	562	62.0%	575	59.8%
Not Hispanic or Latino	409	34.2%	375	34.8%	351	37.7%	325	35.9%	337	35.1%
Unreported	17	1.4%	18	1.7%	12	1.3%	19	2.1%	49	5.2%
Total Enrollment	1,196		1,077		930		906		961	

Enrollment by Major, Fall 2010 - 2017^s

	2010	2011	2012	2013	2014	2015	2016	2017
Arts & Sciences								
Arts & Humanities								
Communication								
Undergraduate	37	39	51	79	86	104	145	190
Post-baccalaureate			1				2	1
Total	37	39	52	79	86	104	147	191
English								
Undergraduate	55	72	90	84	100	89	105	137
Post-baccalaureate	1		1	1	2	2		1
Graduate	10	12	17	16	20	19	17	19
Total	66	84	108	101	122	110	122	157
History								
Undergraduate	74	68	74	100	102	127	137	191
Post-baccalaureate	2		1	1	2	1	2	4
Total	76	68	75	101	104	128	139	195
Spanish								
Undergraduate							1	8
Post-baccalaureate								1
Total							1	9
Science & Mathematics								
Biology								
Undergraduate	91	119	135	147	151	183	340	432
Post-baccalaureate		1	5	3	1	1	2	9
Total	91	120	140	150	152	184	342	441
Mathematics								
Undergraduate	30	41	48	51	39	43	64	78
Post-baccalaureate		3	3	2	3	1		2
Total	30	44	51	53	42	44	64	80
Psychology								
Undergraduate	164	199	223	224	219	238	334	361
Post-baccalaureate	4	4	1	1	2	2	2	4
Total	168	203	224	225	221	240	336	365

Enrollment by Major, Fall 2010 - 2017 (con't.)

	2010	2011	2012	2013	2014	2015	2016	2017
Social Sciences								
Applied Arts & Sciences								
Undergraduate	183	228	349	423	468	440	469	470
Post-baccalaureate	1		3	3	2	4	7	11
Total	184	228	352	426	470	444	476	481
Criminology								
Undergraduate	155	186	207	253	267	301	358	459
Post-baccalaureate	1	1	5	1	3	3	1	3
Total	156	187	212	254	270	304	359	462
Political Science								
Undergraduate	8	16	17	23	27	32	44	55
Post-baccalaureate				1		1		1
Total	8	16	17	24	27	33	44	56
Sociology								
Undergraduate	73	74	84	92	100	113	126	137
Post-baccalaureate		1	1		1	1		
Total	73	75	85	92	101	114	126	137
Business								
Accounting & Finance								
Accounting								
Undergraduate	123	136	178	212	245	213	216	298
Post-baccalaureate	8	13	21	24	22	22	17	25
Graduate		29	49	47	57	62	84	83
Total	131	178	248	283	324	297	317	406
Finance								
Undergraduate	33	58	56	59	81	88	108	137
Post-baccalaureate			1				3	5
Total	33	58	57	59	81	88	111	142

The Bachelor of Science in Child Development is the newest undergraduate major and enrolled its first students in fall 2017.

Enrollment by Major, Fall 2010 - 2017 (con't.)

	2010	2011	2012	2013	2014	2015	2016	2017
Computing & Cyber Security								
Computer Information Systems								
Undergraduate	74	94	94	92	91	94	101	135
Post-baccalaureate		4	4	4	5	6	4	3
Total	74	98	98	96	96	100	105	138
Computer Science								
Undergraduate			5	22	32	36	58	108
Post-baccalaureate						2	5	3
Total			5	22	32	38	63	111
Management & Marketing								
Business Administration								
Post-baccalaureate							6	
Graduate	257	321	384	373	362	343	324	414
Total	257	321	384	373	362	343	330	414
General Business Administration								
Undergraduate	93	103	137	176	165	159	242	323
Post-baccalaureate	1	2	1	2	5	3	1	
Total	94	105	138	178	170	162	243	323
Beginning in 2016, General Business Administration includes lower-division students admitted as Pre-Business.								
International Business Management								
Undergraduate	31	31	31	25	31	37	49	46
Post-baccalaureate				1	1	2	2	
Total	31	31	31	26	32	39	51	46
Management								
Undergraduate	202	152	184	203	209	257	333	390
Post-baccalaureate				3	3	5		2
Total	202	152	184	206	212	262	333	392
Marketing								
Undergraduate	44	35	52	66	64	64	77	108
Post-baccalaureate	1		1	1			1	
Total	45	35	53	67	64	64	78	108

The Master of Business Administration is the largest graduate program at A&M-SA.

The Bachelor of Science in Interdisciplinary Studies is the largest undergraduate program at A&M-SA. Most graduates of this program will seek teacher certification.

Enrollment by Major, Fall 2010 - 2017 (con't.)

	2010	2011	2012	2013	2014	2015	2016	2017
Education & Human Development								
Counseling, Health, & Kinesiology								
Community Health								
Undergraduate								12
Total								12
Counseling & Guidance								
Graduate	223	265	333	366	291	221	195	162
Total	223	265	333	366	291	221	195	162
Kinesiology								
Undergraduate	134	108	115	154	172	198	288	362
Post-baccalaureate		1	1	1	1	1	1	2
Graduate	11	27	22	18	18	18	17	17
Total	145	136	138	173	191	217	306	381
Marriage & Family Therapy								
Graduate							8	17
Total							8	17
Educator & Leadership Preparation								
Bilingual Education								
Graduate	33	36	31	27	41	33	31	23
Total	33	36	31	27	41	33	31	23
Early Childhood								
Graduate	46	43	48	58	47	30	27	18
Total	46	43	48	58	47	30	27	18
Educational Administration								
Graduate	105	111	126	148	110	77	75	70
Total	105	111	126	148	110	77	75	70
Grades 8-12 Certification								
Graduate	23	20	21	12	7	6	3	1
Total	23	20	21	12	7	6	3	1
Interdisciplinary Studies								
Undergraduate	696	807	792	772	729	753	900	965
Post-baccalaureate	2	4	1	2	3	4	2	2
Total	698	811	793	774	732	757	902	967
Beginning in 2016, Interdisciplinary Studies includes lower-division students admitted as Pre-Education.								
Reading Specialization								
Graduate	18	24	32	35	29	23	37	56
Total	18	24	32	35	29	23	37	56

Enrollment by Major, Fall 2010 - 2017 (con't.)

	2010	2011	2012	2013	2014	2015	2016	2017
Special Education								
Graduate	57	50	61	80	81	70	46	58
Total	57	50	61	80	81	70	46	58
Undeclared/Unknown								
Undergraduate	1	3	9	7	8	2	12	15
Post-baccalaureate	2	1	1	1	2	2	3	3
Graduate	13	12	9	16	14	28	42	23
Total	16	16	19	24	24	32	57	41
Total Enrollment	3,120	3,554	4,116	4,512	4,521	4,564	5,474	6,460

Enrollment by Texas Residential County, Fall 2013 - 2017⁹

County	2013		2014		2015		2016		2017	
	#	%	#	%	#	%	#	%	#	%
Bexar	3,977	88.1%	4,006	88.6%	3,948	86.5%	4,569	83.5%	5,261	81.4%
Atascosa	61	1.4%	73	1.6%	87	1.9%	127	2.3%	136	2.1%
Wilson	74	1.6%	66	1.5%	79	1.7%	109	2.0%	143	2.2%
Guadalupe	60	1.3%	54	1.2%	68	1.5%	106	1.9%	126	2.0%
Medina	63	1.4%	39	0.9%	52	1.1%	78	1.4%	93	1.4%
Comal	34	0.8%	31	0.7%	45	1.0%	56	1.0%	69	1.1%
Webb	13	0.3%	18	0.4%	30	0.7%	28	0.5%	31	0.5%
Kendall	5	0.1%	8	0.2%	13	0.3%	19	0.3%	23	0.3%
Frio	11	0.2%	7	0.2%	12	0.3%	16	0.3%	29	0.4%
Other Counties	172	3.8%	169	3.7%	180	3.9%	302	5.5%	470	7.3%
Total Texas	4,470	99.1%	4,471	98.9%	4,514	98.9%	5,410	98.8%	6,381	98.8%
Other States	14	0.3%	17	0.4%	23	0.5%	33	0.6%	48	0.7%
Other Countries	28	0.6%	33	0.7%	27	0.6%	31	0.6%	31	0.5%
Total	4,512		4,521		4,564		5,474		6,460	

Enrollment by Age, Fall 2013 - 2017¹⁰

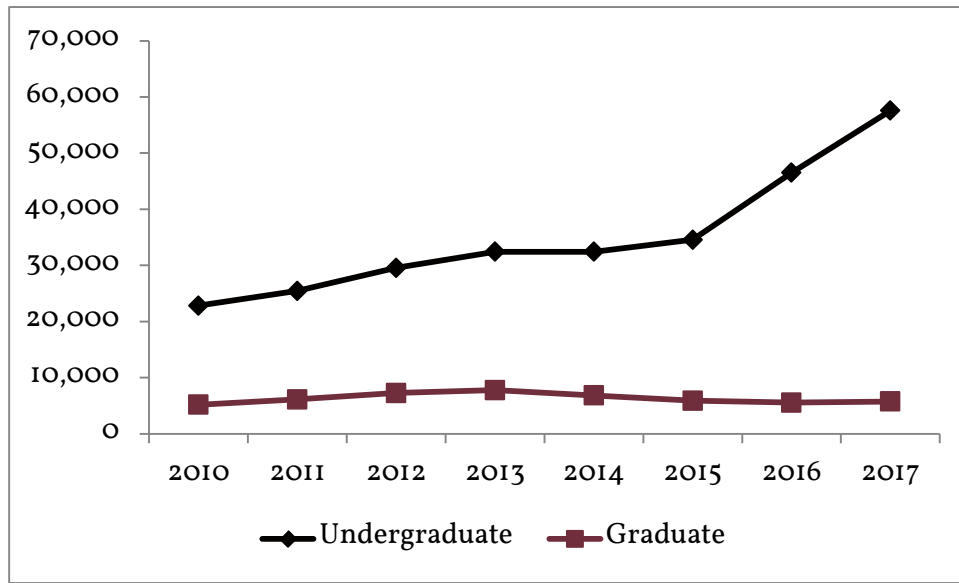
	2013		2014		2015		2016		2017	
	#	%	#	%	#	%	#	%	#	%
<21	73	1.6%	65	1.4%	110	2.4%	581	10.6%	1,040	16.1%
21-25	1,304	28.9%	1,344	29.7%	1598	35.0%	1,770	32.3%	2,062	31.9%
26-30	1,121	24.8%	1,177	26.0%	1111	24.3%	1,222	22.3%	1,380	21.4%
31-35	712	15.8%	690	15.3%	670	14.7%	721	13.2%	770	11.9%
36-40	474	10.5%	485	10.7%	399	8.7%	442	8.1%	462	7.2%
41-45	327	7.2%	309	6.8%	291	6.4%	325	5.9%	328	5.1%
46-50	250	5.5%	218	4.8%	208	4.6%	181	3.3%	216	3.3%
>50	251	5.6%	233	5.2%	177	3.9%	232	4.2%	202	3.1%
Total	4,512		4,521		4,564		5,474		6,460	
Average	32.0		31.6		30.5		29.5		28.5	

Enrollment by Age and Level, Fall 2017

	Undergraduate		Post-baccalaureate		Graduate		Total	
	Count	Percent	Count	Percent	Count	Percent	Count	Percent
<21	1,040	19.2%					1,040	16.1%
21-25	1,900	35.1%	8	9.8%	154	16.0%	2,062	31.9%
26-30	1,055	19.5%	20	24.4%	305	31.7%	1,380	21.4%
31-35	575	10.6%	20	24.4%	175	18.2%	770	11.9%
36-40	324	6.0%	12	14.6%	126	13.1%	462	7.2%
41-45	234	4.3%	8	9.8%	86	9.0%	328	5.1%
46-50	157	2.9%	3	3.7%	56	5.8%	216	3.3%
>50	132	2.4%	11	13.4%	59	6.1%	202	3.1%
Total	5,417		82		961		6,460	
Average	27.5		36.1		33.8		28.5	

Credit Hours

Semester Credit Hours, Fall 2010 - 2017¹¹



Semester Credit Hours by College & Level, Fall 2010 - 2017¹²

	2010	2011	2012	2013	2014	2015	2016	2017
Arts & Sciences								
Undergraduate	8,003	9,899	11,025					
Graduate	48	69	105					
Total	8,051	9,968	11,130					
Arts & Humanities								
Undergraduate							7,647	11,247
Graduate							114	114
Total							7,761	11,361
Humanities & Social Sciences								
Undergraduate				7,854	7,513	8,481		
Graduate				84	123	102		
Total				7,938	7,636	8,583		
Science & Mathematics								
Undergraduate				3,695	3,399	4,259	6,488	9,012
Social Sciences								
Undergraduate							6,558	8,148
Business								
Undergraduate	6,762	6,813	8,922	10,752				
Graduate	1,531.5	2,164.5	2,697	2,577				
Total	8,293.5	8,977.5	11,619	13,329				
Accounting, Computing, & Finance								
Undergraduate					5,058	4,746		
Graduate					1,375.5	1,372.50		
Total					6,433.5	6,119		
Accounting & Finance								
Undergraduate							3,018	4,185
Graduate							852	1,521
Total							3,870	5,706
Computing & Cyber Security								
Undergraduate							2,301	2,979
Graduate							210	261
Total							2,511	3,240
Management & Marketing								
Undergraduate					6,822	7,359	8,145	9,128
Graduate					1,171.5	1,098	1,422	1,191
Total					7,993.5	8,457	9,567	10,319

Semester Credit Hours by College & Level, Fall 2010 - 2017 (con't.)

	2010	2011	2012	2013	2014	2015	2016	2017
Education & Human Development								
<i>Counseling, Health, & Kinesiology</i>								
Undergraduate					1,098	1,308	1,890	2,177
Graduate					2,127	1,620	1,524	1,293
Total					3,225	2,928	3,414	3,470
<i>Curriculum & Kinesiology</i>								
Undergraduate	8,067	8,729	9,612	10,122				
Graduate	1,260	1,278	1,383	1,614				
Total	9,327	10,007	10,995	11,736				
<i>Educator & Leadership Preparation</i>								
Undergraduate					8,535	8,415	9,828	9,494
Graduate					2,049	1,698	1,434	1,362
Total					10,584	10,113	11,262	10,856
<i>Leadership & Counseling</i>								
Graduate	2,328	2,616	3,078	3,501				
University College								
Undergraduate							635	1,191
Grand Total								
Undergraduate	22,832	25,441	29,559	32,423	32,425	34,568	46,510	57,561
Graduate	5,167.5	6,127.5	7,263	7,776	6,846	5,890.50	5,556	5,742
Total	27,999.5	31,568.5	36,822	40,199	39,271	40,458.5	52,066	63,303

**The University College offers
Jaguar Tracks--one-hour courses which
undergraduate students take to discover
their place on campus, develop a global
perspective, become active members of the
broader community within their disciplines,
and ultimately discover their place in their
professional fields.**

Semester Credit Hours by College, Department, Discipline & Level, Fall 2017¹³

	UGRD	GRAD	Total
Arts & Sciences			
Arts & Humanities			
Art	747		787
Communication	810		810
Communications - Journalism	261		261
English	2,877	114	2,991
History	3,798		3,798
Music	594		594
Philosophy	402		402
Radio, Television and Film	33		33
Spanish	717		717
Speech	903		903
Women's and Gender Studies	105		105
Arts & Humanities Total	11,247	114	11,361
Science & Mathematics			
Biology	2,587		2,587
Chemistry	731		731
Geography	405		405
Geology	285		285
Mathematics	2,240		2,240
Physics	149		149
Psychology	2,615		2,615
Science & Mathematics Total	9,012		9,012
Social Sciences			
Criminology	3,450		3,450
Government	2,013		2,013
Military Science	75		75
Political Science	474		474
Sociology	2,106		2,106
Southwest Borderlands Studies	30		30
Social Sciences Total	8,148		8,148
Arts & Sciences Total	28,407	114	28,521

Semester Credit Hours by College, Department, Discipline & Level, Fall 2017 (con't.)

	UGRD	GRAD	Total
Business			
Accounting & Finance			
Accounting	2,481	675	3,156
Economics	582	384	966
Finance	1,122	462	1,584
Accounting & Finance Total	4,185	1,521	5,706
Computing & Cyber Security			
Computer Information Systems	2,322	261	2,583
Computer Science	657		657
Computing & Cyber Security Total	2,979	261	3,240
Management & Marketing			
Business Administration	1,133		1,133
Business Communication	1,035		1,035
Business Law	882		882
Fire and Emergency Services	750		750
Management	4,212	978	5,190
Marketing	1,116	213	1,329
Management & Marketing Total	9,128	1,191	10,319
Business Total	16,292	2,973	19,265
Education & Human Development			
Counseling, Health, & Kinesiology			
Counseling and Guidance		1,185	1,185
Health	264		264
Kinesiology	1,913	108	2,021
Counseling, Healthy, & Kinesiology Total	2,177	1,293	3,470
Educator & Leadership Preparation			
Bilingual Education	1,089	111	1,200
Early Childhood	840	90	930
Educational Administration	-	417	417
Education	3,954	57	4,011
Education Field Experience	992	36	1,028
Reading	1,158	402	1,560
Special Education	1,461	249	1,710
Educator & Leadership Preparation Total	9,494	1,362	10,856
Education & Human Development Total	11,671	2,655	14,326
University College	1,191		1,191
Grand Total	57,561	5,742	63,303

Semester Credit Hours by College, Department, Major, & Level, Fall 2017¹⁴

	UGRD	PB	GRAD	Total
Arts & Sciences				
Arts & Humanities				
Communication	2,066	12		2,078
English	1,450	6	123	1,579
History	2,066	33		2,099
Spanish	84	6		90
Arts & Humanities Total	5,666	57	123	5,846
Science & Mathematics				
Biology	4,948	68		5,016
Mathematics	834	12		846
Psychology	3,780	22		3,802
Science & Mathematics Total	9,562	102		9,664
Social Sciences				
Applied Arts & Sciences	4,041	90		4,131
Criminology	5,177	24		5,201
Political Science	617	12		629
Sociology	1,316			1,316
Social Sciences Total	11,151	126		11,277
Arts & Sciences Total	26,379	285	123	26,787
Business				
Accounting & Finance				
Accounting	3,026	201	564	3,791
Finance	1,454	37		1,491
Accounting & Finance Total	4,480	238	564	5,282
Computing & Cyber Security				
Computer Information Systems	1,494	18		1,512
Computer Science	1,203	22		1,225
Computing & Cyber Security Total	2,697	40		2,737
Management & Marketing				
Business Administration			2,334	2,334
General Business Administration	3,409			3,409
International Business Administration	484			484
Management	3,959	12		3,971
Marketing	1,185			1,185
Management & Marketing Total	9,037	12	2,334	11,383
Business Total	16,214	290	2,898	19,402

Semester Credit Hours by College, Department, Major & Level, Fall 2017 (con't.)

	UGRD	PB	GRAD	Total
Education & Human Development				
Counseling, Health, & Kinesiology				
Community Health	162			162
Counseling and Guidance			1,026	1,026
Kinesiology	3,839	26	104	3,969
Marriage & Family Therapy			129	129
Counseling, Health, & Kinesiology Total	4,001	26	1,259	5,286
Educator & Leadership Preparation				
Bilingual Education			150	150
Early Childhood			123	123
Educational Administration			342	342
Grades 8-12 Certification				
Interdisciplinary Studies	10,327	24		10,351
Reading Specialization			249	249
Secondary Education			3	3
Special Education			318	318
Educator & Leadership Preparation Total	10,327	24	1,185	11,536
Education & Human Development Total	14,328	50	2,444	16,822
Unknown	77	18	105	200
Grand Total	56,998	643	5,570	63,211

Student/Faculty Ratio, Fall 2013 - 2017

	2013	2014	2015	2016	2017
FTE (12/9)					
Undergraduate	2,701.9	2,702.1	2,880.7	3,875.3	4,803.4
Graduate	864.0	760.7	654.5	617.3	618.9
Total	3,565.9	3,462.8	3,535.2	4,492.7	5,422.3
S/F Ratio	23.1	21.5	22.5	22.6	23.9
FTE (15/12)					
Undergraduate	2,161.5	2,161.7	2,304.5	3,100.3	3,842.7
Graduate	648.0	570.5	490.9	463.0	464.2
Total	2,809.5	2,736.2	2,795.4	3,563.3	4,306.9
S/F Ratio	18.2	17.0	17.8	18.0	19.0
Faculty FTE	154.25	161.375	157.4	198.5	227.1

Class & Semester Credit Hour Load, Fall 2011 - 2017¹⁵

	2011	2012	2013	2014	2015	2016	2017
Class Sections Offered	540	595	632	648	632	845	962
Instruction Type							
Organized*	534	572	602	603	587	840	957
Individual Instruction	6	23	30	45	45	5	5
Instruction Mode							
Face-to-Face	360	370	407	430	384.5	596	743
Online	52	75	74	58	57.5	67	53
Two-Way Interactive Video							
Video Tape/DVD and/or Broadcast TV					1	1	
Multiple or Other Electronic Media		1				32	30
Hybrid	128	149	151	160	189	149	136
Average Size							
Organized Class*	20.2	21.8	22.5	21.6	23.0	21.7	23.4
Undergraduate	21.0	22.4	23.7	23.3	24.8	22.9	24.4
Graduate	17.4	19.8	18.5	16.1	16.1	14.9	16.0
Average SCH Load/Student	8.9	8.9	8.9	8.7	8.9	9.5	9.8
Undergraduate	9.8	9.9	9.8	9.4	9.5	10.2	10.5
Graduate	6.5	6.4	6.5	6.4	6.4	6.1	5.8
Average Class Load/Student	3.0	3.0	3.1	3.0	3.0	3.3	3.6
Undergraduate	3.3	3.3	3.3	3.2	3.2	3.6	3.8
Graduate	2.2	2.2	2.3	2.3	2.2	2.1	2.0

*Organized classes include those classified as lecture, laboratory, or seminar.

¹⁵ Source: CBM001 and CBM004. Hyflex courses were counted as Face-to-Face through 2015, but were reported as Multiple or Electronic Media beginning in 2016.

Annual SCH by Level, 2010 - 2017¹⁶

	2010-11	2011-12	2012-13	2013-14	2014-15	2015-16	2016-17
Fall							
Undergraduate	22,832	25,441	29,559	32,423	32,425	34,550	46,510
Graduate	5,257.5	6,127.5	7,263	7,776	6,846	5,908.5	5,556
Total	28,089.5	31,568.5	36,822	40,199	39,271	40,458.5	52,066
Spring							
Undergraduate	22,374	25,882	27,635	31,112	31,351	33,799	47,266
Graduate	5,766	6,438	7,176	7,152	6,079.5	5,109	5,461.5
Total	28,140	32,320	34,811	38,264	37,431	38,908	52,727.5
Summer							
Undergraduate	7,062	6,819	8,142	8,643	9,609	10,743	13,046
Graduate	2,967	3,414	3,835.5	3,231	2,872.5	2,514	3,945
Total	10,029	10,233	11,977.5	11,874	12,482	13,257	16,991
Total							
Undergraduate	52,268	58,142	65,336	72,178	73,385	79,092	106,822
Graduate	13,990.5	15,979.5	18,274.5	18,159	15,798	13,532	14,963
Total	66,258.5	74,121.5	83,610.5	90,337	89,183	92,624	121,785

SCH Generated by Instruction Mode, Fall 2010 - 2017¹⁷

	2010	2011	2012	2013	2014	2015	2016	2017
Face-to-Face								
Sections	443	360	370	407	430	384.5	596	743
Enrollment	9,329	6,764	7,208	8,179	7,959	7,771	11,970	16,725
SCH	27,201.5	19,762	21,306	23,751	23,349	22,697	33,184	44,686
Online								
Sections	16	52	75	74	58	57.5	67	53
Enrollment	336	1,487	1,991	1,914	1,483	1,440	1,436	1,344
SCH	888	4,186.5	5,571	5,496	4,167	4,504.5	4,251	3,978
Video Tape/DVD and/or Broadcast TV								
Sections						1	1	
Enrollment						2	12	
SCH						6	36	
Multiple or Other Electronic Media								
Sections			1				32	30
Enrollment			3				1,144	1,190
SCH			9				3,432	3,570
Hybrid								
Sections		128	149	151	160	189	149	136
Enrollment		2,540	3,359	3,689	3,930	4,617	3,753	3,708
SCH		7,620	9,936	10,952	11,755	13,701	11,163	11,069
Total								
Sections	459	540	595	632	648	631	845	962
Enrollment	9,665	10,791	12,561	13,782	13,372	13,830	18,315	22,967
SCH	28,089.5	31,568.5	36,822	40,199	39,271	40,458.5	52,066	63,303

SCH Generated by College, Department, Instruction Mode, & Level, Fall 2017¹⁸

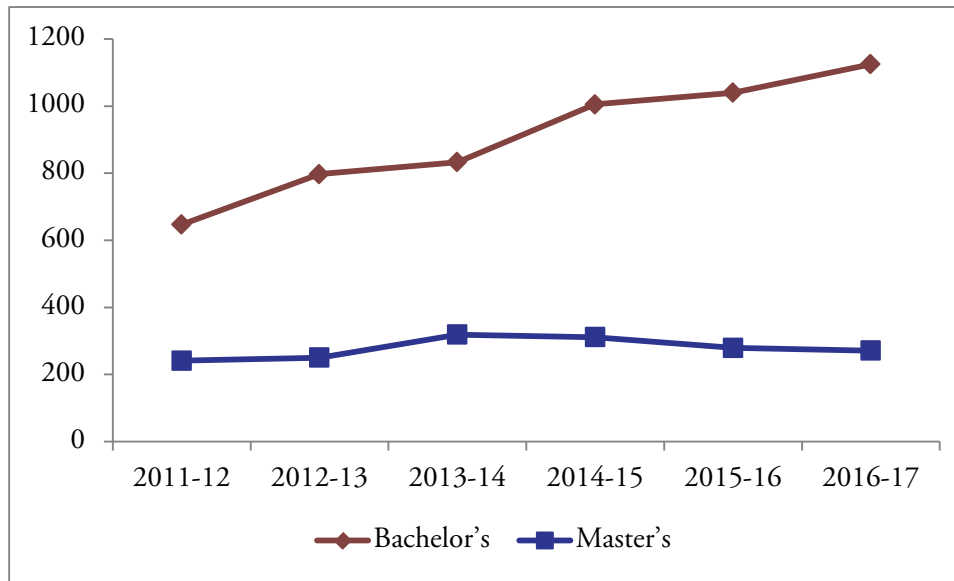
	UGRD		GRAD		Total	
	Sections	SCH	Sections	SCH	Sections	SCH
Arts & Sciences						
Arts & Humanities						
Face-to-Face	150	10,659	6.5	114	156.5	10,773
Online	4	261			4	261
Hybrid	4.5	327			4.5	327
Science & Mathematics						
Face-to-Face	178	8,355			178	8,355
Online	5	477			5	477
Hybrid	2	180			2	180
Social Sciences						
Face-to-Face	70.5	5,682			70.5	5,682
Online	21.5	1,938			21.5	1,938
Hybrid	6.5	528			6.5	528
Business						
Accounting & Finance						
Face-to-Face	23.5	2,208	4.5	234	28	2,442
Multiple or Other Electronic Media	2	282	3	444	5	726
Hybrid	17	1,695	8	843	25	2,538
Computing & Cyber Security						
Face-to-Face	31	2,169			31	2,169
Online						
Multiple or Other Electronic Media	1	144	1	90	2	234
Hybrid	8	666	2	171	10	837
Management & Marketing						
Face-to-Face	31	2,604	2	69	33	2,673
Online	9.5	783	1	3	10.5	786
Multiple or Other Electronic Media	16	2,118	5	459	21	2,577
Hybrid	36	3,623	6	660	42	4,283
Education & Human Development						
Counseling, Health, & Kinesiology						
Face-to-Face	27	2,072	25	1,011	52	3,083
Online	1	105			1	105
Hybrid			7	282	7	282
Educator & Leadership Preparation						
Face-to-Face	124.5	7,970	12.5	348	137	8,318
Online	4	246	7	165	11	411
Multiple or Other Electronic Media			2	33	2	33
Hybrid	14	1,278	25	816	39	2,094

SCH Generated by College, Department, Instruction Mode, & Level, Fall 2017 (con't.)

	UGRD		GRAD		Total	
	Sections	SCH	Sections	SCH	Sections	SCH
University College						
Face-to-Face	57	1,191			57	1,191
Total						
Face-to-Face	692.5	42,910	50.5	1,776	743	44,686
Online	45	3,810	8	168	53	3,978
Multiple or Other Electronic Media	19	2,544	11	1,026	30	3,570
Hybrid	88	8,297	48	2,772	136	11,069

Degrees Awarded

Annual Degrees Conferred by Level¹⁹



In 2016-2017, Interdisciplinary Studies awarded the most Bachelor's level degrees. Business Administration awarded the most Master's level degrees .

Annual Degrees Conferred by Level & Gender

	2011-12		2012-13		2013-14		2014-15		2015-16		2016-17	
	#	%	#	%	#	%	#	%	#	%	#	%
Bachelor's												
Female	424	65.5%	561	70.4%	562	67.5%	626	62.3%	623	59.9%	726	64.5%
Male	223	34.5%	236	29.6%	271	32.5%	379	37.7%	417	40.1%	399	35.5%
Total	647		797		833		1,005		1,040		1,125	
Master's												
Female	173	71.8%	164	65.6%	214	67.1%	216	69.5%	188	67.4%	180	66.4%
Male	68	28.2%	86	34.4%	105	32.9%	95	30.5%	91	32.6%	91	33.6%
Total	241		250		319		311		279		271	
Total												
Female	597	67.2%	725	69.2%	776	67.4%	842	64.0%	811	61.5%	906	64.9%
Male	291	32.8%	322	30.8%	376	32.6%	474	36.0%	508	38.5%	490	35.1%
Total	888		1,047		1,152		1,316		1,319		1,396	

Annual Degrees Conferred by Level & Ethnicity²⁰

	2011-12		2012-13		2013-14		2014-15		2015-16		2016-17	
	#	%	#	%	#	%	#	%	#	%	#	%
Bachelor's												
Hispanic or Latino origin	407	62.9%	558	70.0%	594	71.3%	681	67.8%	691	66.4%	775	68.9
Not Hispanic or Latino origin	198	30.6%	220	27.6%	227	27.3%	306	30.4%	335	32.2%	342	30.4
Unknown	42	6.5%	19	2.4%	12	1.4%	18	1.8%	14	1.3%	8	0.7
Master's												
Hispanic or Latino origin	145	60.2%	148	59.2%	200	62.7%	204	65.6%	164	58.8%	164	60.5
Not Hispanic or Latino origin	79	32.8%	96	38.4%	114	35.7%	102	32.8%	111	39.8%	103	38.0
Unknown	17	7.1%	6	2.4%	5	1.6%	5	1.6%	4	1.4%	4	1.5
Total												
Hispanic or Latino origin	552	62.2%	706	67.4%	794	68.9%	885	67.2%	855	64.8%	939	67.3
Not Hispanic or Latino origin	277	31.2%	316	30.2%	341	29.6%	408	31.0%	446	33.8%	445	31.9
Unknown	59	6.6%	25	2.4%	17	1.5%	23	1.7%	18	1.4%	12	0.8

Annual Degrees Conferred by Level & Race²¹

	2011-12		2012-13		2013-14		2014-15		2015-16		2016-17	
	#	%	#	%	#	%	#	%	#	%	#	%
Bachelor's												
American Indian or Alaskan Native	12	1.9%	12	1.5%	10	1.2%	20	2.0%	27	2.6%	29	2.6%
Asian	4	0.6%	7	0.9%	5	0.6%	15	1.5%	13	1.3%	15	1.3%
Black or African-American	32	4.9%	47	5.9%	52	6.2%	59	5.9%	50	4.8%	65	5.8%
International	1	0.2%	5	0.6%	2	0.2%	11	1.1%	5	0.5%	12	1.1%
Multiracial	9	1.4%	22	2.8%	26	3.1%	33	3.3%	51	4.9%	52	4.6%
Native Hawaiian or Other Pacific Islander	1	0.2%	1	0.1%	1	0.1%	1	0.1%			3	0.3%
Unknown or Not Reported	276	42.7%	257	32.2%	184	22.1%	212	21.1%	210	20.2%	224	19.9%
White	312	48.2%	446	56.0%	553	66.4%	654	65.1%	684	65.8%	725	64.4%
Master's												
American Indian or Alaskan Native	2	0.8%	2	0.8%	3	0.9%	6	1.9%	3	1.1%	3	1.1%
Asian	1	0.4%	5	2.0%	9	2.8%	10	3.2%	4	1.4%	8	2.9%
Black or African-American	15	6.2%	18	7.2%	19	6.0%	14	4.5%	21	7.5%	13	4.8%
International	1	0.4%	2	0.8%	2	0.6%	4	1.3%	7	2.5%	3	1.1%
Multiracial	7	2.9%	8	3.2%	9	2.8%	13	4.2%	8	2.9%	8	2.9%
Native Hawaiian or Other Pacific Islander			1	0.4%	1	0.3%		0.0%				
Unknown or Not Reported	109	45.2%	62	24.8%	48	15.0%	47	15.1%	50	17.9%	24	8.9%
White	106	44.0%	152	60.8%	228	71.5%	217	69.8%	186	66.7%	212	78.3%
Total												
American Indian or Alaskan Native	14	1.6%	14	1.3%	13	1.1%	26	2.0%	30	2.3%	32	2.3%
Asian	5	0.6%	12	1.1%	14	1.2%	25	1.9%	17	1.3%	23	1.7%
Black or African-American	47	5.3%	65	6.2%	71	6.2%	73	5.5%	71	5.4%	78	5.6%
International	2	0.2%	7	0.7%	4	0.3%	15	1.1%	12	0.9%	15	1.1%
Multiracial	16	1.8%	30	2.9%	35	3.0%	46	3.5%	59	4.5%	60	4.3%
Native Hawaiian or Other Pacific Islander	1	0.1%	2	0.2%	2	0.2%	1	0.1%			3	0.2%
Unknown or Not Reported	385	43.4%	319	30.5%	232	20.1%	259	19.7%	260	19.7%	248	17.8%
White	418	47.1%	598	57.1%	781	67.8%	871	66.2%	870	66.0%	937	67.1%

Annual Degrees Conferred by College, Department, & Level, Fall 2017

	2010-11	2011-12	2012-13	2013-14	2014-15	2015-16	2016-17
Arts & Sciences							
Bachelor's	253	306	366				
Master's		3	3				
Total	253	309	369				
Arts & Humanities							
Bachelor's						94	84
Master's						6	5
Total						100	89
Humanities & Social Sciences							
Bachelor's				301	406		
Master's				7	7		
Total				308	413		
Science & Mathematics							
Bachelor's				87	94	123	118
Social Sciences							
Bachelor's						349	352
Business							
Bachelor's	144	129	159				
Master's	36	76	88				
Total	180	205	247				
Accounting, Computing, & Finance							
Bachelor's				66	115		
Master's				17	22		
Total				83	137		
Accounting & Finance							
Bachelor's						79	72
Master's						12	19
Total						91	91
Computing & Cyber Security							
Bachelor's						29	23
Management & Marketing							
Bachelor's				104	126	116	157
Master's				103	97	101	109
Total				207	223	217	266

Degrees Conferred by College, Department, & Level, Fall 2017 (con't.)

	2010-11	2011-12	2012-13	2013-14	2014-15	2015-16	2016-17
Education & Human Development							
<i>Counseling, Health, & Kinesiology</i>							
Bachelor's				31	38	52	56
Master's				105	98	77	68
Total				136	136	129	124
<i>Curriculum & Kinesiology</i>							
Bachelor's	223	212	272				
Master's	50	52	51				
Total	273	264	323				
<i>Educator & Leadership Preparation</i>							
Bachelor's				244	226	198	263
Master's				87	87	83	70
Total				331	313	281	333
<i>Leadership & Counseling</i>							
Master's	101	110	108				
Total							
Bachelor's	620	647	797	833	1,005	1,040	1,125
Master's	187	241	250	319	311	279	271
Total	807	888	1,047	1,152	1,316	1,319	1,396

Degrees Conferred by College, Department, Major, & Level²²

	2010-11	2011-12	2012-13	2013-14	2014-15	2015-16	2016-17
Arts & Sciences							
Arts & Humanities							
Communications							
Bachelor's	7	11	11	23	22	24	30
Master's							
Total	7	11	11	23	22	24	30
English							
Bachelor's	18	15	28	18	22	30	32
Master's		3	3	7	7	6	5
Total	18	18	31	25	29	36	37
History							
Bachelor's	17	15	16	22	20	40	22
Master's							
Total	17	15	16	22	20	40	22
Science & Mathematics							
Biology							
Bachelor's	15	27	33	29	32	54	38
Master's							
Total	15	27	33	29	32	54	38
Mathematics							
Bachelor's	1	10	7	9	9	8	8
Master's							
Total	1	10	7	9	9	8	8
Psychology							
Bachelor's	34	52	68	49	53	61	72
Master's							
Total	34	52	68	49	53	61	72
Social Sciences							
Applied Arts & Sciences							
Bachelor's	106	104	123	148	236	213	217
Master's							
Total	106	104	123	148	236	213	217
Criminology							
Bachelor's	35	51	49	66	64	97	89
Master's							
Total	35	51	49	66	64	97	89
Political Science							
Bachelor's	1	3	3	3	5	10	10
Master's							
Total	1	3	3	3	5	10	10
Sociology							
Bachelor's	19	18	28	21	37	29	36
Master's							
Total	19	18	28	21	37	29	36

Degrees Conferred by College, Department, Major, & Level (con't.)

	2010-11	2011-12	2012-13	2013-14	2014-15	2015-16	2016-17
Business							
Accounting & Finance							
Accounting							
Bachelor's	29	30	33	38	70	59	49
Master's	2	10	13	17	22	12	19
Total	31	40	46	55	92	71	68
Finance							
Bachelor's	5	10	12	8	21	20	23
Master's							
Total	5	10	12	8	21	20	23
Computing & Cyber Security							
Computer Information Systems							
Bachelor's	8	15	23	16	19	20	17
Master's							
Total	8	15	23	16	19	20	17
Computer Science							
Bachelor's				4	5	9	6
Master's							
Total				4	5	9	6
Management & Marketing							
Business Administration							
Bachelor's							
Master's	34	66	75	103	97	101	109
Total	34	66	75	103	97	101	109
General Business Administration							
Bachelor's	7	8	19	21	24	20	31
Master's							
Total	7	8	19	21	24	20	31
International Business Management							
Bachelor's	4	10	10	8	10	14	14
Master's							
Total	4	10	10	8	10	14	14
Management							
Bachelor's	77	49	55	59	73	67	98
Master's							
Total	77	49	55	59	73	67	98
Marketing							
Bachelor's	14	7	7	16	19	15	14
Master's							
Total	14	7	7	16	19	15	14

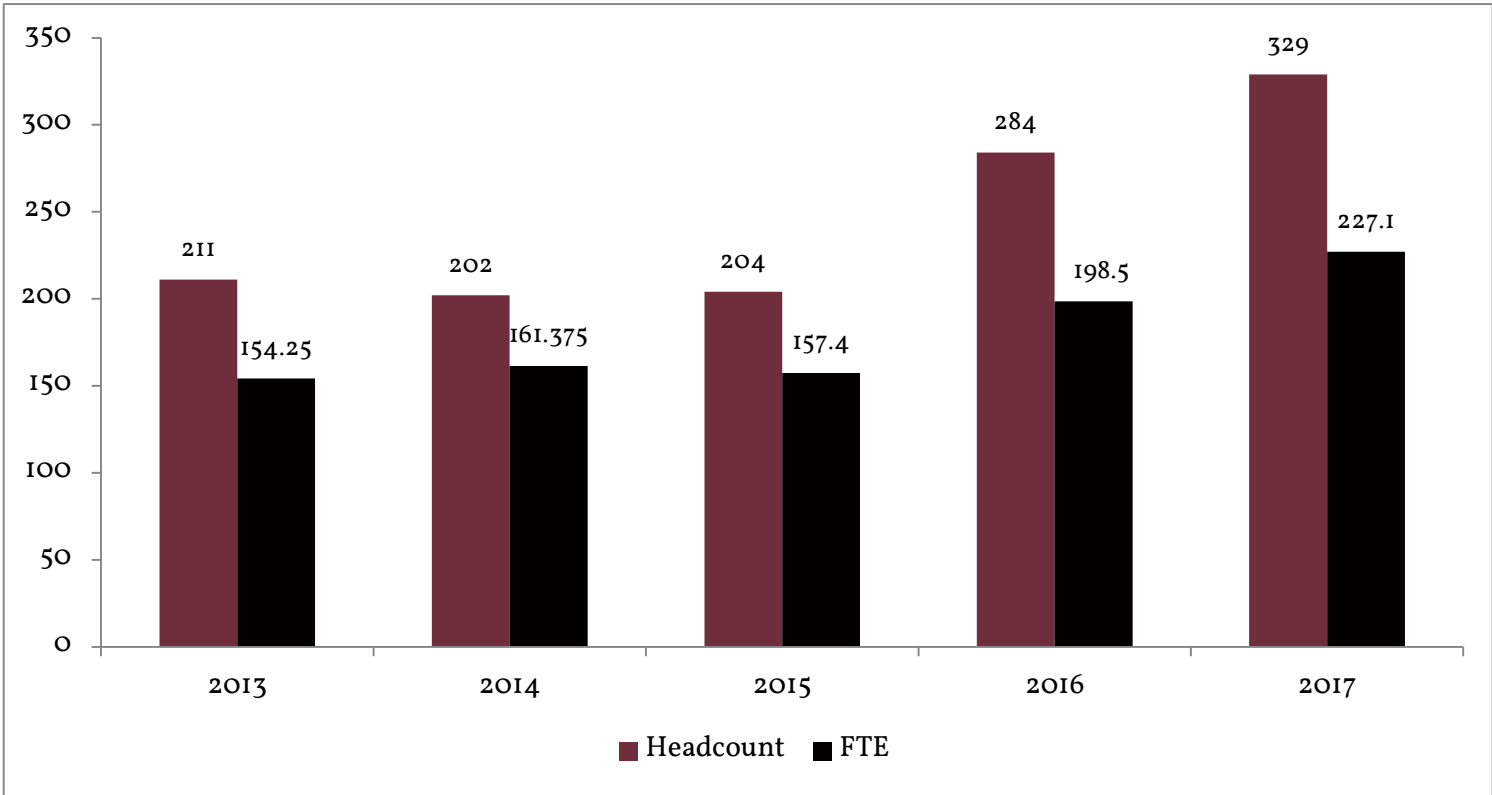
Degrees Conferred by College, Department, Major, & Level (con't.)

	2010-11	2011-12	2012-13	2013-14	2014-15	2015-16	2016-17
Education & Human Development							
Counseling, Healthy, & Kinesiology							
Counseling and Guidance							
Bachelor's							
Master's	64	74	78	100	93	76	62
Total	64	74	78	100	93	76	62
Kinesiology							
Bachelor's	38	30	32	31	38	52	56
Master's	2	3	5	5	5	1	6
Total	40	33	37	36	43	53	62
Educator & Leadership Preparation							
Bilingual Education							
Bachelor's							
Master's	20	11	11	10	9	10	12
Total	20	11	11	10	9	10	12
Early Childhood							
Bachelor's							
Master's	7	15	9	18	19	10	11
Total	7	15	9	18	19	10	11
Educational Administration							
Bachelor's							
Master's	37	36	30	40	35	25	28
Total	37	36	30	40	35	25	28
Interdisciplinary Studies							
Bachelor's	185	182	240	244	226	198	263
Master's							
Total	185	182	240	244	226	198	263
Reading Specialization							
Bachelor's							
Master's	5	7	12	6	5	9	7
Total	5	7	12	6	5	9	7
Special Education							
Bachelor's							
Master's	16	16	14	13	19	29	12
Total	16	16	14	13	19	29	12
Total							
Bachelor's	620	647	797	833	1,005	1,040	1,125
Master's	187	241	250	319	311	279	271
Total	807	888	1,047	1,152	1,316	1,319	1,396

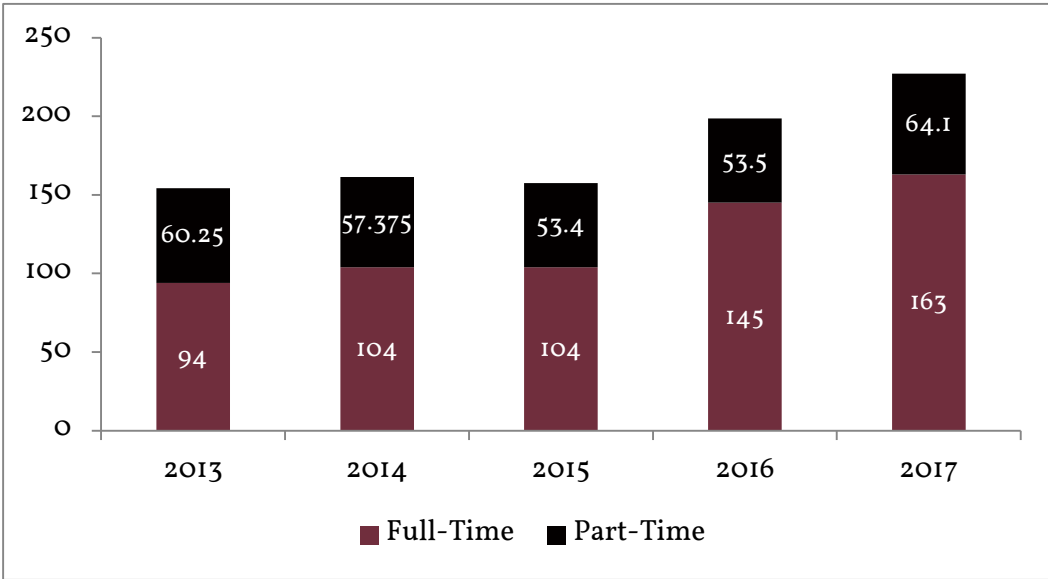
Faculty and Staff

Faculty

A&M-SA Faculty, Fall 2013 - 2017¹

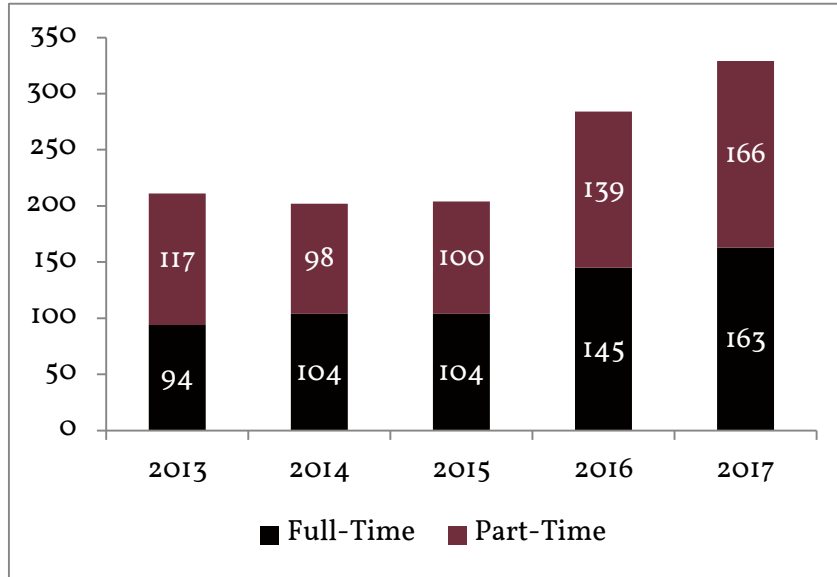


Faculty FTE (Full-Time Equivalent), Fall 2013 - 2017

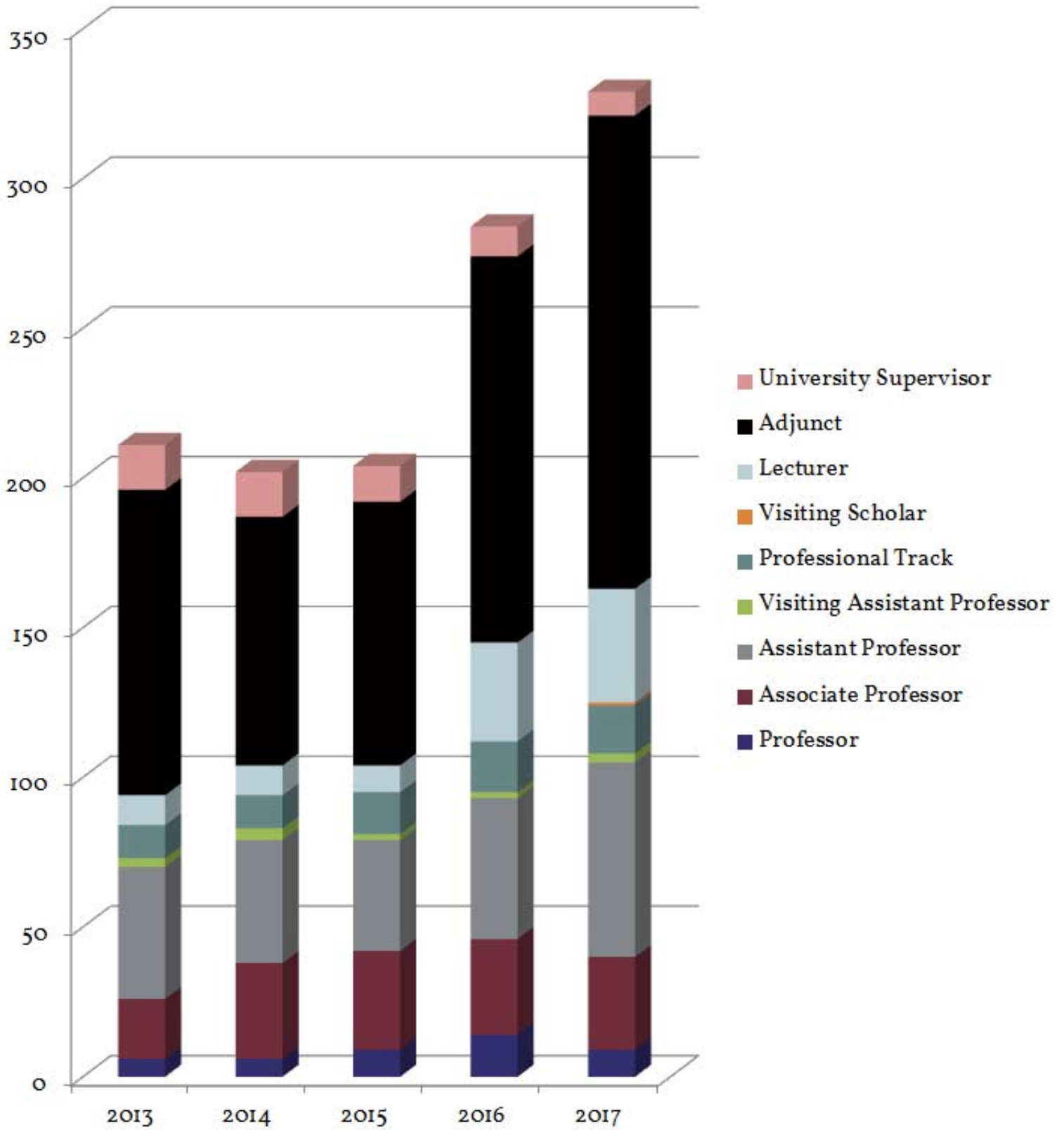


¹ Source: CBM004 and Office of the Provost.

Faculty Headcount, Fall 2013 - 2017²



Faculty Headcount by Rank, Fall 2013 - 2017²³



²³ Source: Office of the Provost

Detailed Composition of Faculty, Fall 2013- 2017²⁴

	2013		2014		2015		2016		2017	
	#	%	#	%	#	%	#	%	#	%
College										
Arts & Sciences										
Arts & Humanities							36	12.7%	62	18.8%
<i>Humanities & Social Sciences</i>	44	20.9%	43	21.3%	44	21.6%				
Science & Mathematics	25	11.8%	22	10.9%	22	10.8%	34	11.8%	46	14%
Social Sciences							29	10.2%	33	10.1%
Business	48	22.7%								
<i>Accounting, Computing, & Finance</i>			22	10.9%	22	10.8%				
Accounting & Finance							17	6.0%	25	7.6%
Computing & Cyber Security							12	4.2%	10	3.1%
Management & Marketing			23	11.4%	25	12.3%	31	10.9%	34	10.3%
Education & Human Development										
Counseling, Health, & Kinesiology			22	10.9%	23	11.3%	29	10.2%	28	8.5%
<i>Curriculum & Kinesiology</i>	64	30.3%								
Educator & Leadership Preparation			70	34.7%	68	33.3%	78	27.5%	78	23.7%
<i>Leadership & Counseling</i>	30	14.2%								
University College										
University College							18	6.3%	13	4.0%
Ethnicity										
Hispanic or Latino origin	52	24.6%	44	21.8%	49	24.0%	67	23.6%	73	22.2%
Not Hispanic or Latino origin	152	72.0%	150	74.3%	146	71.6%	181	63.7%	228	69.3%
Not reported	7	3.3%	8	4.0%	9	4.4%	36	12.7%	28	8.5%
Race										
American Indian or Alaskan Native	1	0.5%		0.0%		0.0%		0.0%	1	0.3%
Asian	11	5.2%	10	5.0%	16	7.8%	20	7.0%	23	7%
Black or African-American	9	4.3%	7	3.5%	7	3.4%	12	4.2%	14	4.3%
International	1	0.5%	2	1.0%	1	0.5%	5	1.8%	5	1.5%
Unknown	59	28.0%	52	25.7%	58	28.4%	32	11.3%	26	7.9%
White	130	61.6%	131	64.9%	122	59.8%	156	54.9%	196	59.6%
Gender										
Female	113	53.6%	110	54.5%	109	53.4%	156	54.9%	180	54.7%
Male	98	46.4%	92	45.5%	95	46.6%	125	44.0%	148	45%
Not Reported							3	1.1%	1	0.3%

Detailed Composition of Faculty, Fall 2013-2017 (con't.)

	2013		2014		2015		2016		2017	
	#	%	#	%	#	%	#	%	#	%
Tenure Status										
Tenured	26	12.3%	38	18.8%	42	20.6%	46	16.2%	40	12.2%
Tenure Track	44	20.9%	41	20.3%	37	18.1%	47	16.5%	65	19.8
Non-Tenured	141	66.8%	123	60.9%	125	61.3%	191	67.3%	224	68.1%
Rank										
Professor	6	2.8%	6	3.0%	9	4.4%	14	4.9%	9	2.7%
Associate Professor	20	9.5%	32	15.8%	33	16.2%	32	11.3%	31	9.4%
Assistant Professor	44	20.9%	41	20.3%	37	18.1%	47	16.5%	65	19.8%
Visiting Assistant Professor	3	1.4%	4	2.0%	2	1.0%	2	0.7%	3	0.9%
Professional Track	11	5.2%	11	5.4%	14	6.9%	17	5.9%	16	4.9%
Visiting Scholar									1	0.3%
Lecturer	10	4.7%	10	5.0%	9	4.4%	33	11.6%	38	11.6%
Adjunct	102	48.3%	83	41.1%	88	43.1%	129	45.4%	158	48%
University Supervisor	15	7.1%	15	7.4%	12	5.9%	10	3.5%		
Teaching Specialist									8	2.4%
Total	211		202		204		284		329	

Detailed Composition of Full-Time Faculty, Fall 2017²⁵

	#	%
College & Department		
Arts & Sciences		
Arts & Humanities	31	19%
Science & Mathematics	30	18.4%
Social Sciences	17	10.4%
Business		
Accounting & Finance	14	8.6%
Computing & Cyber Security	6	3.7%
Management & Marketing	19	11.7%
Education & Human Development		
Counseling, Health, & Kinesiology	13	8%
Educator & Leadership Preparation	33	20.2%
Ethnicity		
Hispanic or Latino origin	34	20.9%
Not Hispanic or Latino origin	123	75.5%
Not reported	6	3.7%
Race		
American Indian or Alaskan Native	1	0.6%
Asian	18	11%
Black or African-American	6	3.7%
International	3	1.8%
Unknown	5	3.1%
White	101	62%
Gender		
Female	82	50.3%
Male	81	49.7%
Tenure Status		
Tenured	40	24.5%
Tenure Track	65	39.9%
Non-Tenured	58	35.6%
Total	163	

Detailed Composition of Part-Time Faculty, Fall 2017²⁶

	#	%
College & Department		
Arts & Sciences		
Arts & Humanities	31	18.7%
Science & Mathematics	16	9.6%
Social Sciences	16	9.6%
Business		
Accounting & Finance	11	6.7%
Computing & Cyber Security	4	2.5%
Management & Marketing	15	9.2%
Education & Human Development		
Counseling, Health, & Kinesiology	15	9.2%
Educator & Leadership Preparation	45	27.1%
University College		
University College	13	7.8%
Ethnicity		
Hispanic or Latino origin	39	23.5%
Not Hispanic or Latino origin	105	63.3%
Not reported	22	13.3%
Race		
American Indian or Alaskan Native		
Asian	5	3%
Black or African-American	8	4.8%
International	2	1.2%
Unknown	21	12.7%
White	95	57.2%
Gender		
Female	98	59%
Male	67	40.4%
Not Reported	1	0.6%
Total	166	

Staff

Detailed Composition of Staff, Fall 2013 - 2017²⁷

	2013		2014		2015		2016		2017	
	#	%	#	%	#	%	#	%	#	%
Classification										
Clerical	28	16.1%	37	18.6%	30	15.2%	42	17.1%	28	12.2%
Executive/Admin/Mgr	38	21.8%	46	23.1%	41	20.7%	47	19.2%	50	21.7%
Professional Non-Faculty	74	42.5%	81	40.7%	101	51.0%	121	49.4%	125	54.3%
Service/Maintenance	15	8.6%	14	7.0%	12	6.1%	19	7.8%	16	7%
Skilled Craft								0.0%		0.0%
Technical/Paraprof.	19	10.9%	21	10.6%	14	7.0%	16	6.5%	11	4.8%
Race/Ethnicity										
American Indian or Alaskan Native	1	0.6%	1	0.5%				0.0%		0.0%
Asian	4	2.3%	4	2.0%	4	2.0%	6	2.4%	4	1.7%
Black or African-American	5	2.9%	8	4.0%	7	3.5%	12	4.9%	13	5.7%
Hawaiian or Other Pacific Islander							1	0.4%		0.0%
Hispanic	111	63.8%	125	62.8%	116	58.7%	143	58.4%	130	56.5%
Two or more races	1	0.6%					1	0.4%	4	1.7%
Unknown	1	0.6%	1	0.5%	2	1.0%	2	0.8%	2	0.9%
White	51	29.3%	60	30.2%	69	34.8%	80	32.7%	77	33.5%
Gender										
Female	106	60.9%	126	63.3%	133	67.2%	166	67.8%	154	67%
Male	68	39.1%	73	36.7%	65	32.8%	79	32.2%	76	33%
Total	174		199		198		245		230	