

Space Planning Advisory Committee

Discussion Topics

April 26, 2022



TEXAS A&M UNIVERSITY
SAN ANTONIO

Agenda

- ❑ Review of Guiding Themes
- ❑ Initial Moves
 - Overall Concept
 - Buildings Vacated
 - CAB
 - Madla
- ❑ Wrap Up
 - Path Forward

Guiding Themes

For each Campus Building



Madla Building

- ❑ “Front Door” of the campus
- ❑ First impression building for visitors and new/prospective students
- ❑ Student services facility

Central Academic Building

- ❑ The iconic “Old Main” of the campus
- ❑ Administrative “heart” of the campus – 4th floor
- ❑ “Showcase” building – rotunda and timeline
- ❑ Student Success and Retention

Science & Technology Building

- ❑ Arts & Sciences “headquarters”
- ❑ Sciences focused
- ❑ Mays wing – Student support

Patriots Casa

- Military Affairs support facility
- Student health?
- Other general campus support

Classroom Hall

- ❑ General academic building
- ❑ Arts support
- ❑ Administrative/faculty “swing” space

Library & College of Business Building

- ❑ College of Business “headquarters”
- ❑ Main library facility

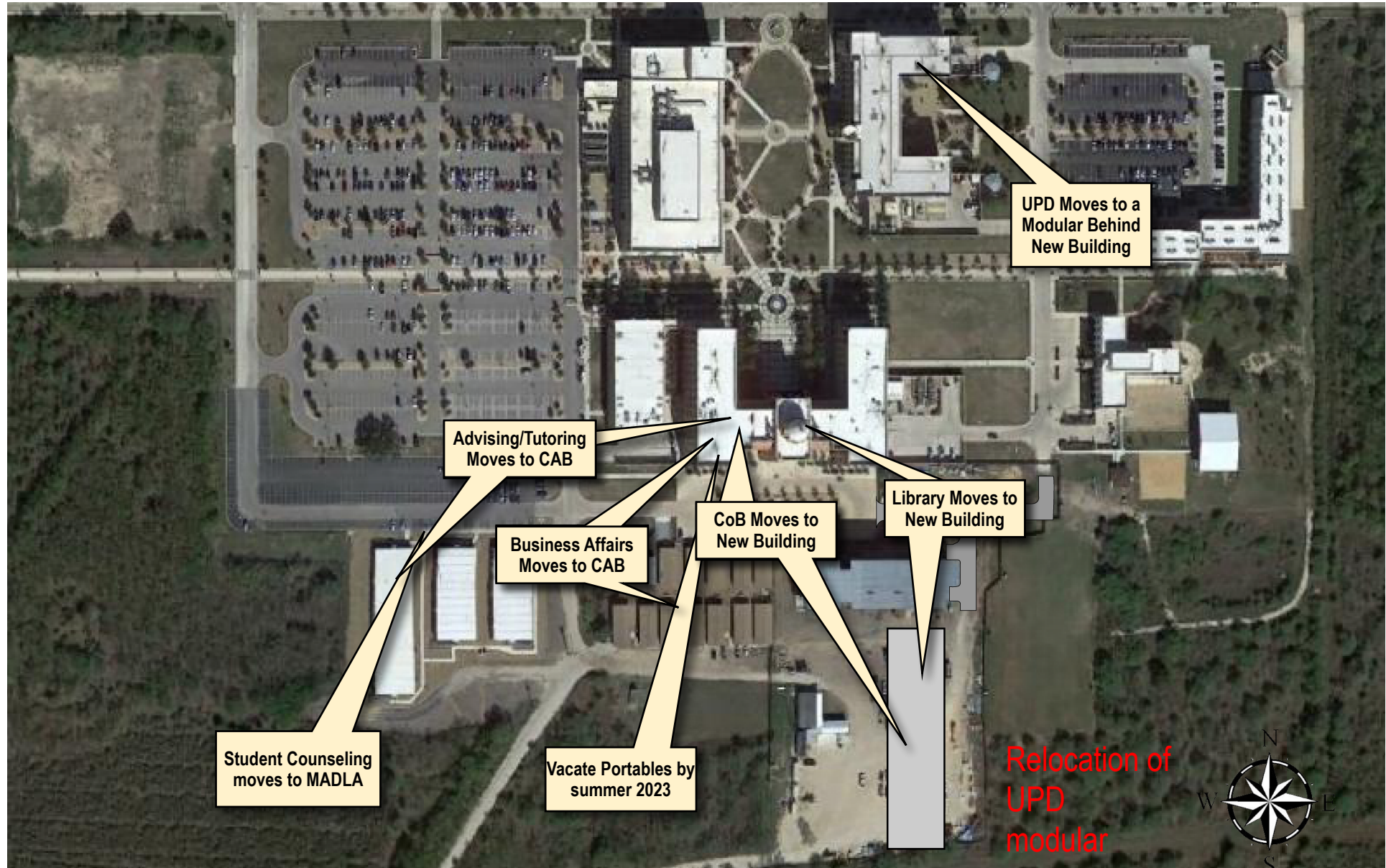
Recreation Center

- Student recreation
- Athletics
- Student health?

Initial Moves Proffer

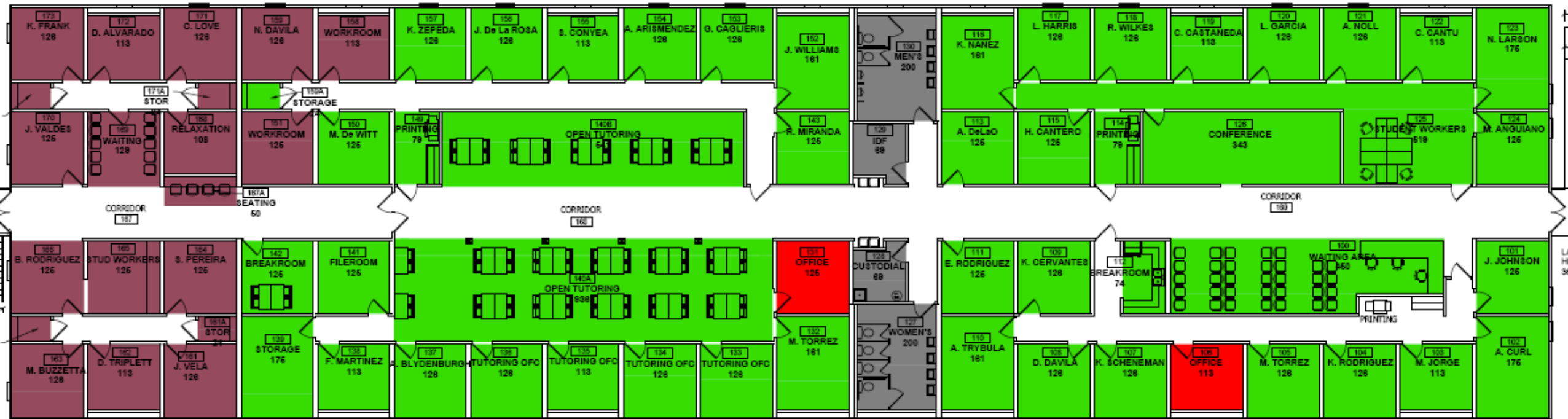


Macro-Level Moves



Modular "C"

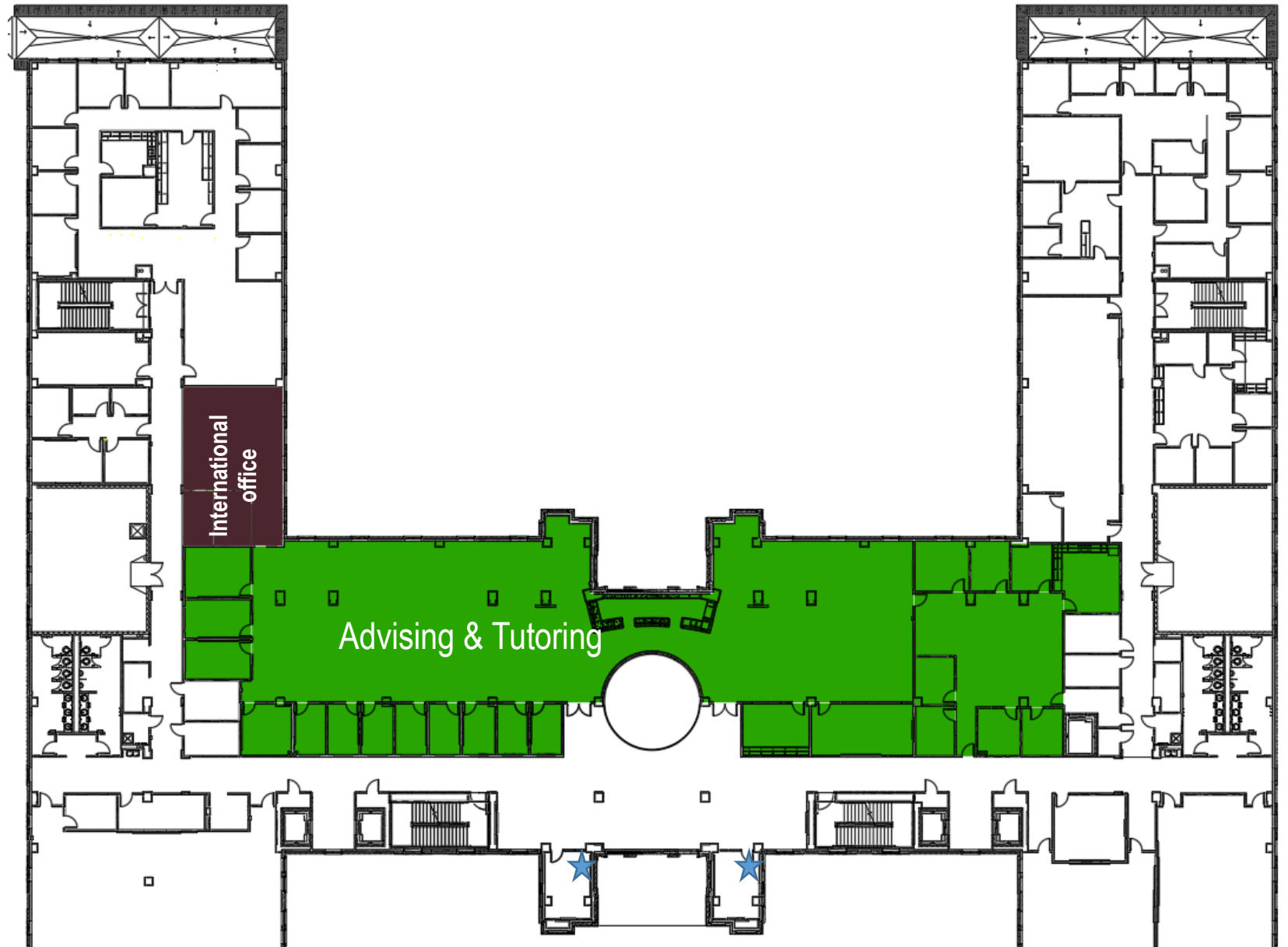
Advising and Tutoring



Central Academic Building

Second Floor

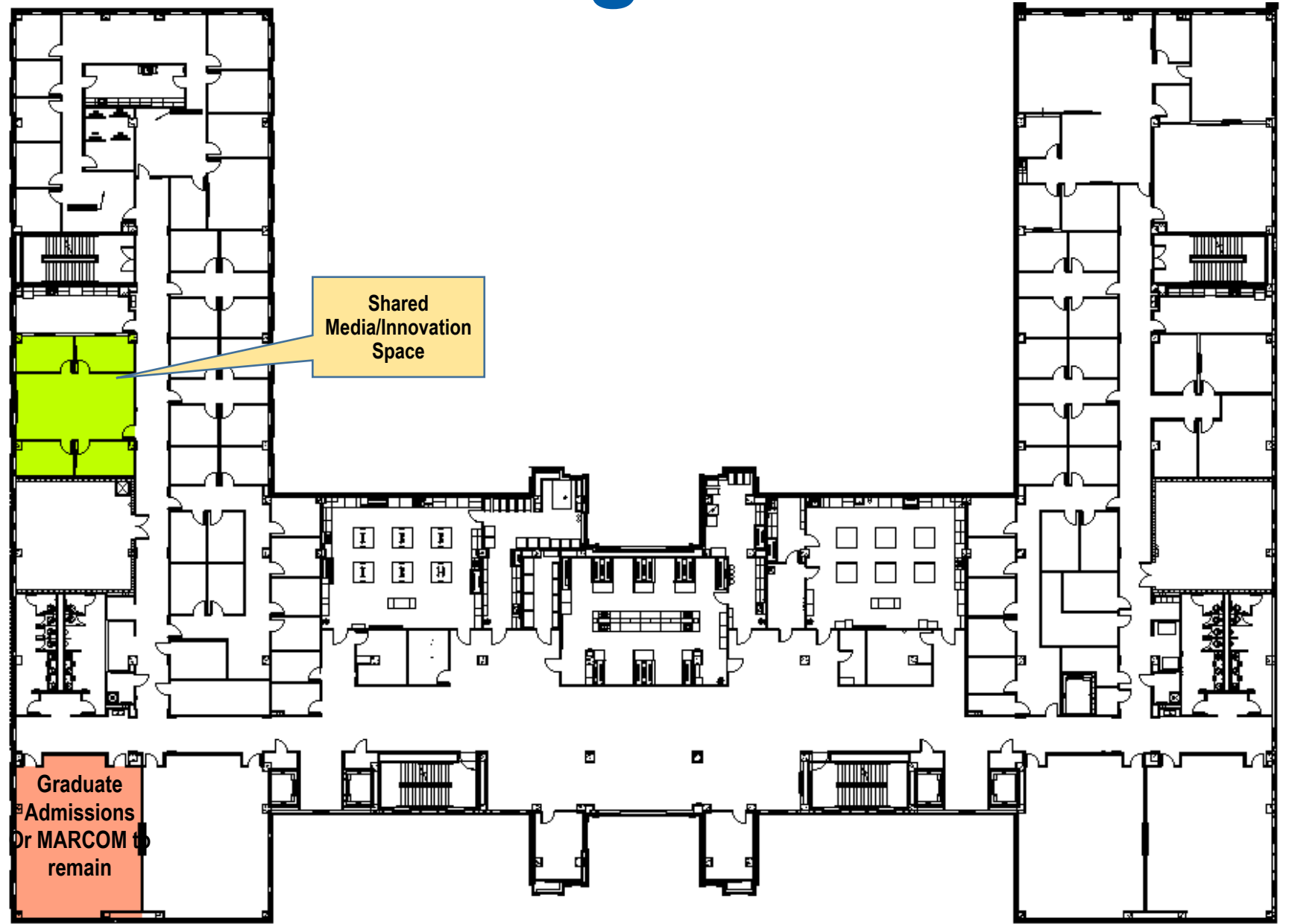
- ❑ Gives Advising and Tutoring a prominent location
- ❑ Makes a statement to the student about their importance
- ❑ Creates an “identifiable” location for the Cisneros Center
- ❑ Addition of services for student public speaking ★



Central Academic Building

Third Floor

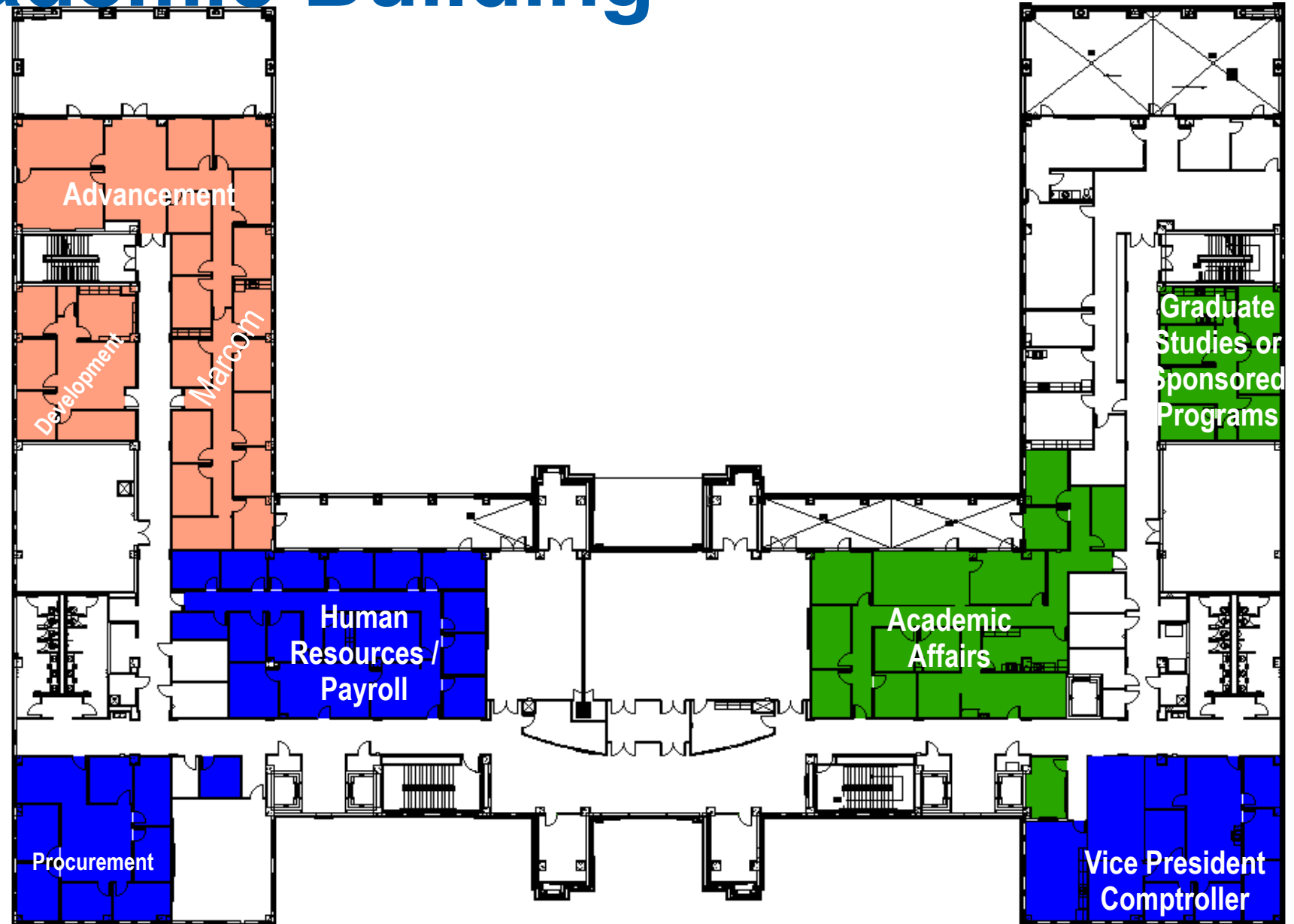
- ❑ Vacated CoB space becomes a shared media/innovation space
- ❑ The vacated Communications suite can now be available for:
 - Graduate Admissions
 - International Affairs
 - Others?



Central Academic Building

Fourth Floor

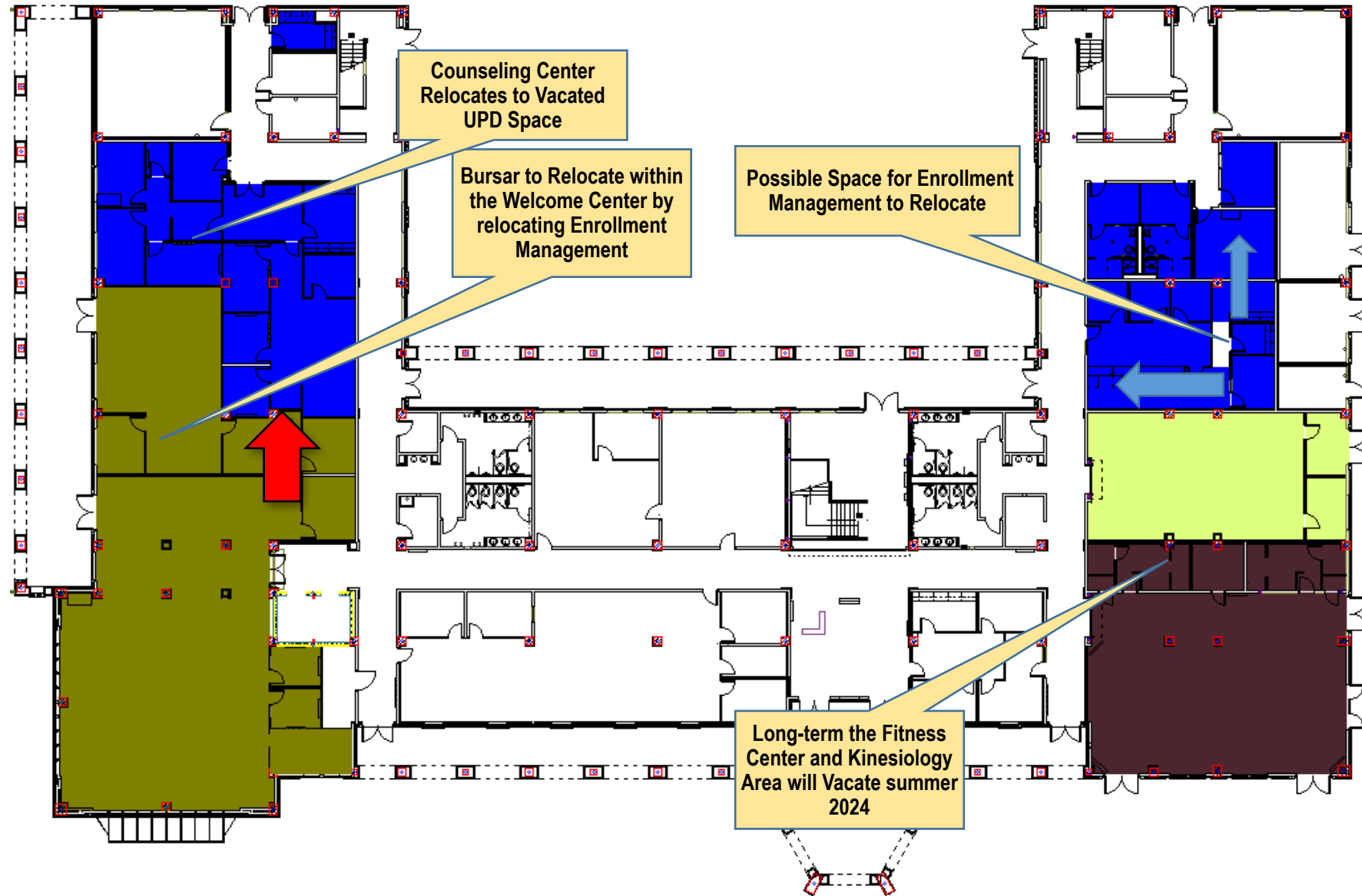
- ❑ Allows Advancement to have a “premier” entertainment space for donors
- ❑ Business Affairs moves back into CAB
- ❑ Creates a synergy between the President’s Office, Business Affairs and Academic Affairs



Madla Building

First Floor

- ❑ UPD moves out of the building
- ❑ Business Affairs (Bursar) co-locates with the Welcome Center
- ❑ Welcome Center expands
- ❑ Counseling (Student Svcs) moves into the vacated Bursars and UPD space
- ❑ Long-term, the Fitness Center and Kinesiology space is vacated



Classroom Hall

First floor

- ❑ Incubator Space will be Shared between Media Dept and Academic Innovation

Central Academic Building

First Floor

- ❑ Parking to Space Possibly Vacated by Open Computer Lab
- ❑ Mays Center Sponsored Programs will need new location in a Modular or Parking remains in portable but moved

