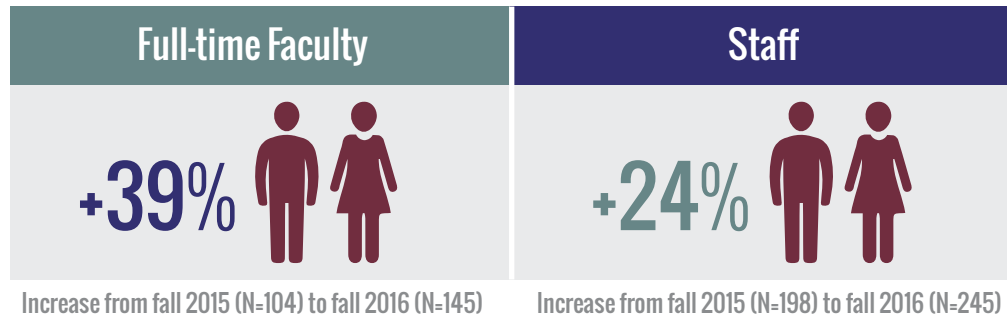


# TRANSFORM THE FUTURE

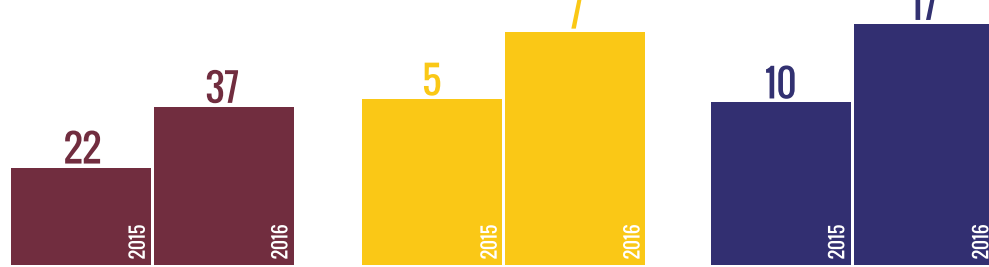
# IMPACT TOMORROW

## Demographics



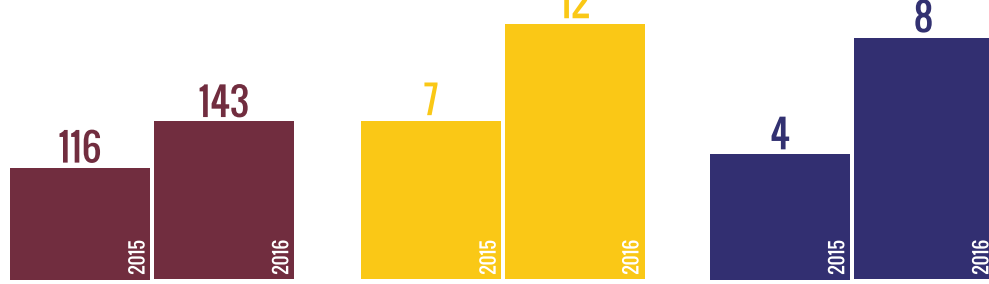
The diversity among faculty and staff is increasing.

### Faculty Ethnicity and Race



Increases from fall 2015 - 2016. \*Other (Includes American Indian, Asian, International).

### Staff Ethnicity/Race



Increases from fall 2015 - 2016. \*Other (Includes American Indian, Asian, Hawaiian or Other Pacific Islander, Two or more races).

## Degree Programs in Development

- B.S. in Chemistry
- B.S. in Engineering Education
- B.S. in Hydrology and Water Resources
- B.S. in Computer Engineering Technology
- M.S. in Biology
- M.S. in Psychology

## Academic Partnerships

- San Antonio Express Lane with Three Rivers High School
- \$850,000 grant to support teacher development at Stewart Elementary (U-PASS)
- 2+2 with UT Health in Nursing

## Cultural Partnerships



## Presidio Gallery, University Archives & Special Collections

- Daughters of the Republic of Texas Archives and Collections
- Alamo Mission Chapter of the Daughters of the Republic of Texas Library Collection

## Corporate Partnerships

### City Base Entertainment

**\$5** Movie Pack\*  
Faculty | Staff | Student  
Sunday-Thursday  
Begins August 28, 2017

\*Movie ticket, small popcorn, small drink



## JOIN IN JAGUARS!

August	29: General The Jaguar's Birthday 30: President's Picnic
September	21: Science & Technology Building Topping Off Ceremony
October	11: Dream Maker Scholarship Luncheon 21: Fall Fest 27: Presidio Gallery Grand Opening
November	4: Ring Ceremony 17: Thanksgiving Luncheon 28: Lights of Esperanza
December	19: Commencement

## President's Commission on Equity



### Commission Co-chairs

- Janice Parten
- Ramona Pittman, Ph.D.



## SafeZone Mobile App

- Campus Police Response Tool
- Emergency Situations
- First Aid Assistance
- Personal Safety Issues
- Exact Location Known

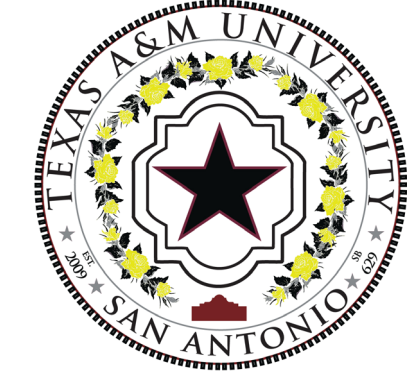
## Stay Connected

Dr. Cynthia Teniente-Matson

@PrezMatson

S.H.A.R.E.

AM-SAOofficeofthePresident@tamusa.edu



# CONVOCATION - FALL 2017

## BUILD. IMPACT. TRANSFORM.

The dedication our faculty and staff have for higher learning serves as the foundation for building a national model for student and academic success. The knowledge you instill, the connections you lend and the experiences you provide to students spark their quest for curiosity, inclusivity and contribution – a way of living modeled by you. Graduates advance with the education, skills and confidence to transform their career, life and community.

## A New Tradition Begins with You



### Strategic Plan

[bit.ly/bitsp17](http://bit.ly/bitsp17)



### Academic Plan

[bit.ly/fdmp17](http://bit.ly/fdmp17)



### Master Plan

[bit.ly/fdmp17](http://bit.ly/fdmp17)

# BUILD TODAY

With our sights set on transforming this budding University to a robust campus, the existing build-out is paving the way for the emergence of a commuter campus to a residential campus.



For construction updates, visit: [bit.ly/tamusaconstruction](http://bit.ly/tamusaconstruction)

## Project Completion: Aug. 2017

- Parking
- Modular Classrooms
- Esperanza Hall
- Kinesiology Pavilion
- Recreation Field
- Dining Services



## Project Completion: Spring 2018

- 300 Tricentennial Eco Park
- Science & Technology Building

## Proposed Academic Building Phase I

Program planning and building design in progress. Approval forthcoming from Board of Regents.



## Esperanza Hall

### Residents

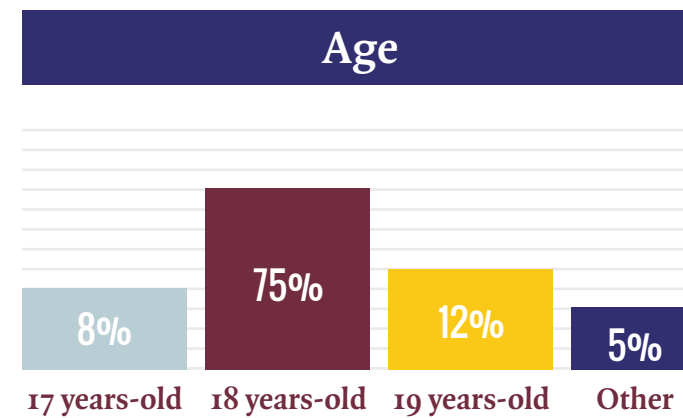
63%



37%



### Age



### Areas of Study



## Student Success

### University College renamed Student Success



**501**  
FALL 2016  
FIRST-YEAR  
STUDENTS

### First-Year Students

Persistence (fall 2016 - spring 2017): 89%

Retention (fall 2016 - fall 2017): 73%

### Overall Population

**5,474**  
FALL 2016  
STUDENT  
ENROLLMENT

9,973 degrees conferred

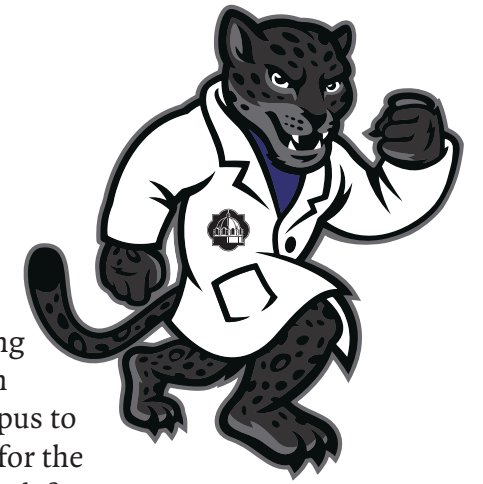
134% enrollment growth since 2009

16% military-connected

**6,627**  
FALL 2017  
PROJECTED  
STUDENT  
ENROLLMENT

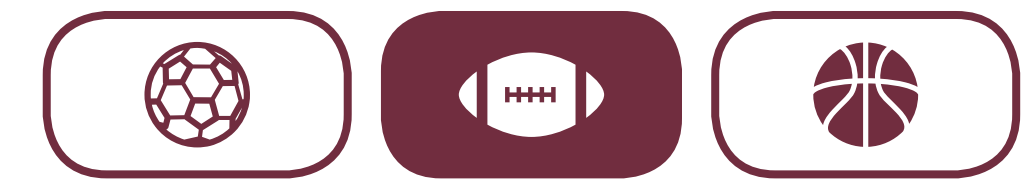
## Mobile Clinic by Baptist Healthy Solutions

- Medical Services for Students Only
- Three Days a Week On-Campus
- No Health Insurance Required
- Walks-Ins and Online Scheduling
- Primary Care and Women's Care



## Athletics

A steering committee will begin looking at the addition of athletic programs. In September, a consultant will visit campus to evaluate and make recommendations for the future, which will be carried out by a task force made up of university staff and faculty.



## Workday, Inc.

Replacing LeaveTraq, TimeTraq, HRConnect and many Single Sign On functions. Training begins September 18.



## Our Journey

