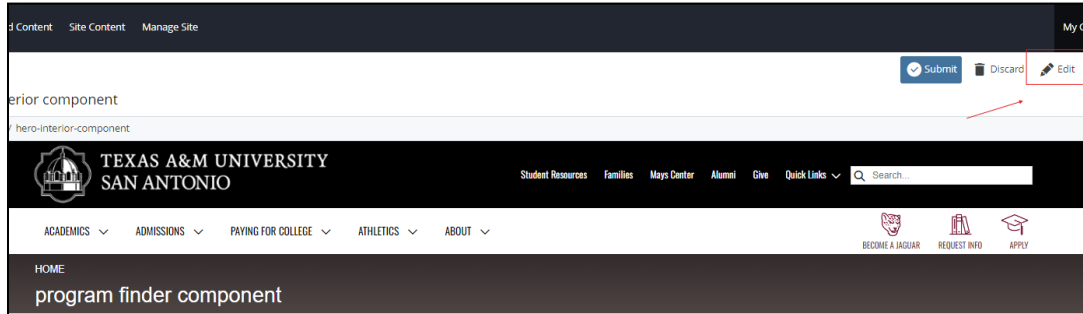


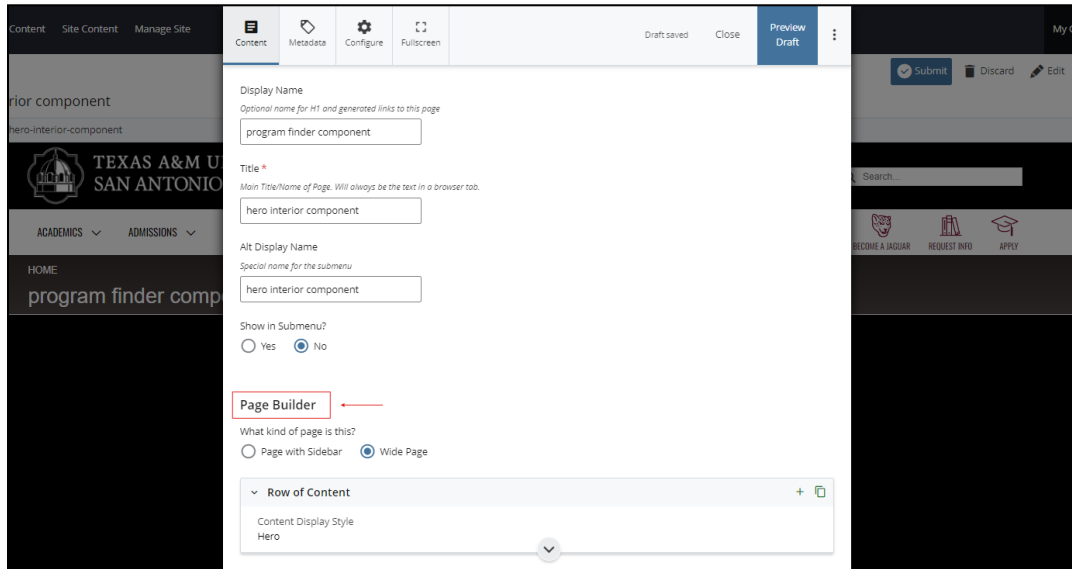
Program Finder Component

This document will explain how to use the “Program Finder Component”:

1. Click the ‘Edit’ button, top right of the screen.

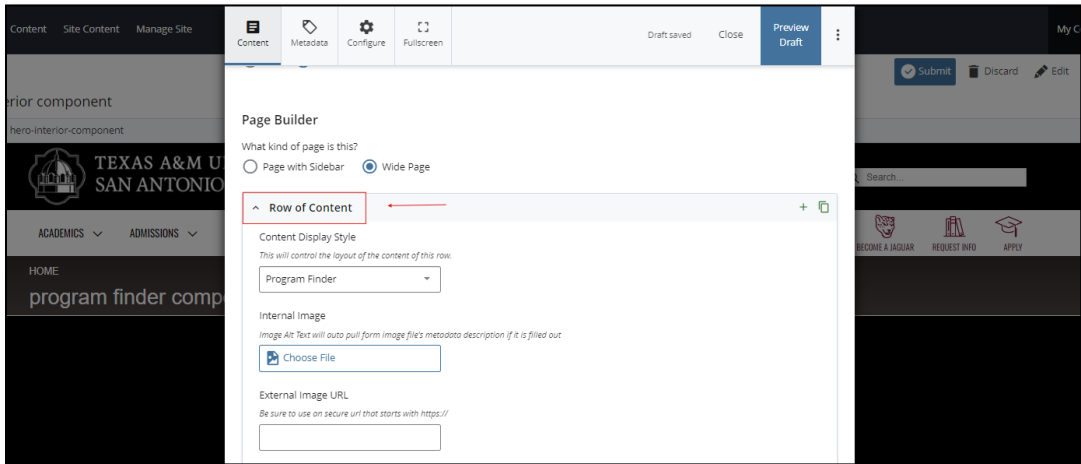


2. Navigate to “Page Builder” section, near the middle of the screen.

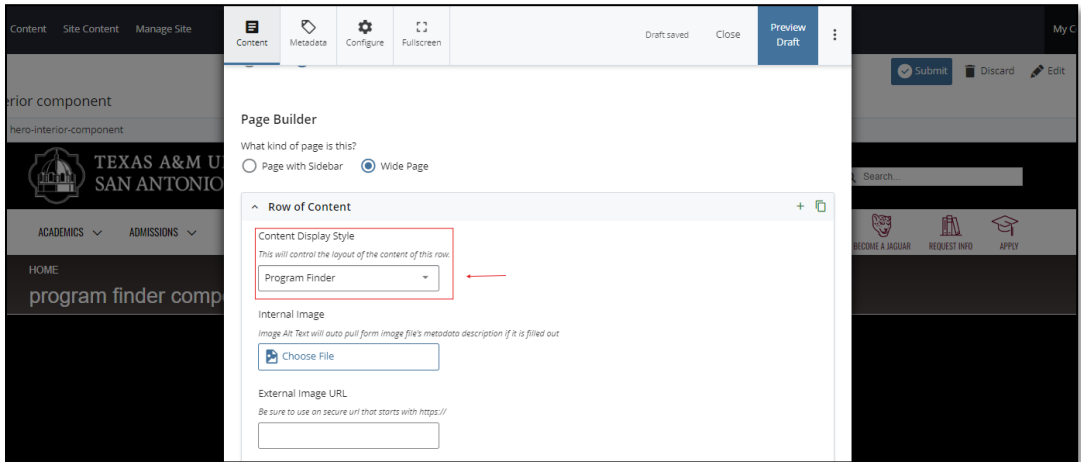


(Next Page)

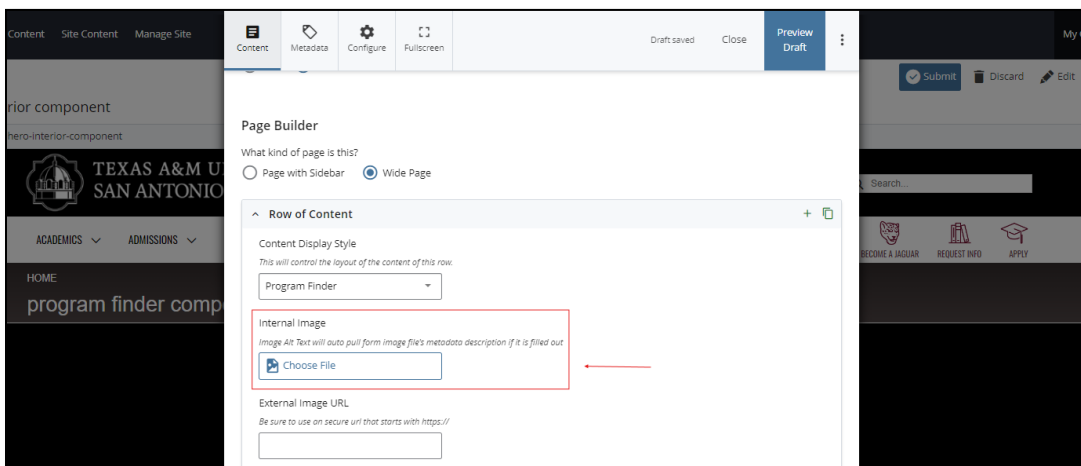
3. Open the **Row of Content** pane by clicking the carrot to the left of the **Row of Content** title.



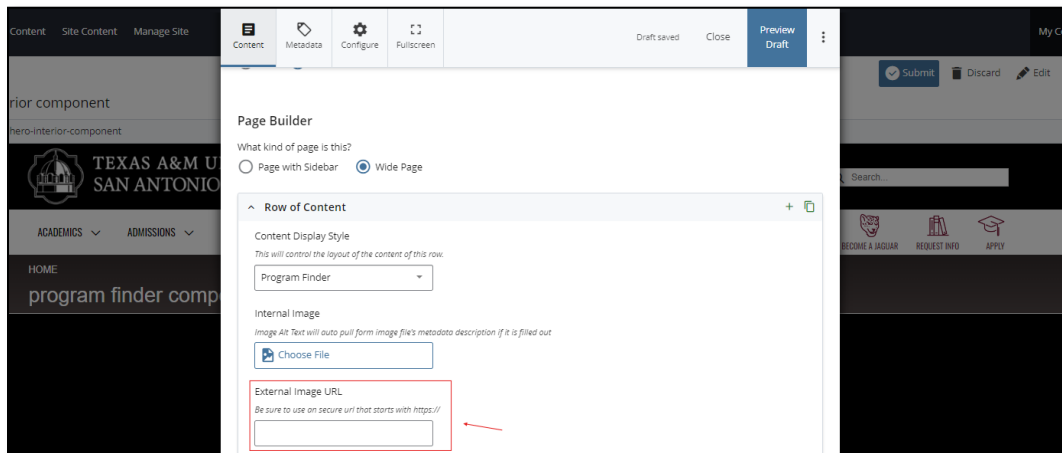
4. Open the **Content Display Style** dropdown and select the **Program Finder** option.



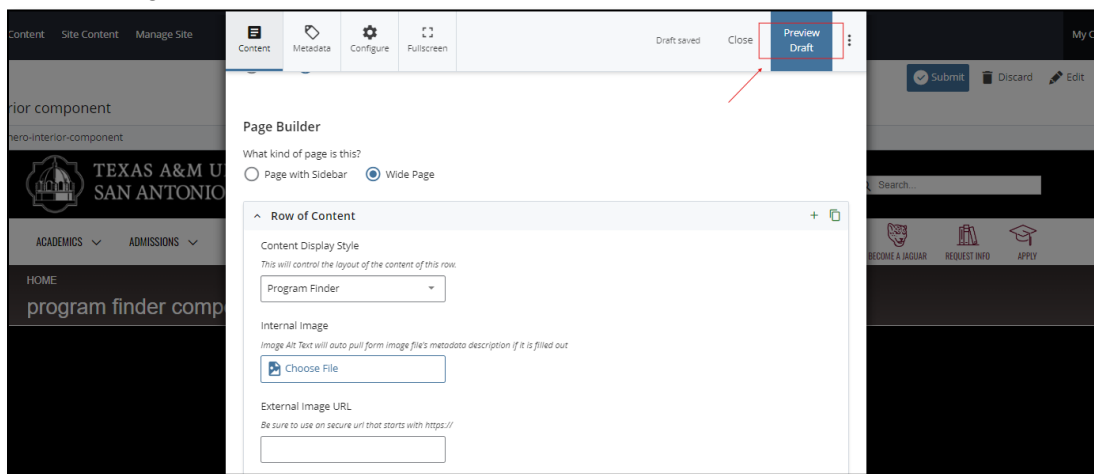
5. Adding an **Internal Image** is optional.



6. Adding an **External Image URL** is optional.



7. After making edits, click on the **Preview Draft** button.



8. If you like what you've created click on the **Submit** button otherwise click on the **Edit** button if you'd like to continue to make changes.

