



Fall 2012

Fact Book

TEXAS A&M UNIVERSITY
SAN ANTONIO





TEXAS A&M UNIVERSITY-SAN ANTONIO
FACT BOOK
FALL 2012

Office of Institutional Research
Office of the Provost
One University Way
San Antonio, TX 78224

TABLE OF CONTENTS

GENERAL INFORMATION	5
Texas A&M University-San Antonio	6
Mission	6
University Accreditation	6
University Profile Fall 2012	7
Texas A&M University System Board of Regents 2012 - 2013	8
TAMU-SA Executive Team 2012 - 2013	9
Faculty Senate 2012 - 2013	9
Staff Council 2012 - 2013	9
Student Government Association 2012 - 2013	9
Organizational Chart	10
Degree Programs 2012 - 2013	11
STUDENT INFORMATION	13
Admissions	14
Fall Admission Data by Level 2009 - 2012	14
Fall 2012 Admission by School and Level	15
Enrollment	16
Fall Enrollment by Level 2009 - 2012.....	16
Fall Enrollment by Coordinating Board Classification 2009 - 2012	16
Detailed Composition of Student Body Fall 2009 - 2012	17
Annual Enrollment by Level	18
Annual Unduplicated Enrollment.....	18
Fall FTE Enrollment 2009 - 2012	19
Fall Enrollment by Major, 2009 - 2012	20
Fall Enrollment by Texas Residential County, 2009 - 2012.....	24
Fall Enrollment by Age, 2009 - 2012.....	25
Fall Enrollment by Age and Level, Fall 2012.....	25
Credit Hour	26
Semester Credit Hours, Fall 2009 - 2012.....	26
Semester Credit Hours by School & Level, Fall 2009 - 2012	26
Semester Credit Hours by School, Instruction Area & Level, Fall 2012	27
Semester Credit Hours by School, Major, & Level, Fall 2012	29
Student/Faculty Ratio, 2011 - 2012.....	30
Class & Semester Credit Hour Load, 2009 - 2012	31
Annual SCH by Level, 2009 - 2012	32
SCH Generated by Instruction Mode, 2009 - 2012.....	33
SCH Generated by School, Instruction Mode, & Level, Fall 2012	34
Degrees Awarded	35
Annual Degrees Conferred by Level, 2009 - 2012	35
Degrees Conferred by School & Level, 2009 - 2012	35

Degrees Conferred by Level & Ethnicity, 2009 - 2012.....	36
Degrees Conferred by Level & Race, 2009 - 2012	37
Degrees Conferred by School, Major, & Level, 2009 - 2012.....	38

FACULTY AND STAFF 41

Faculty 42

TAMU-SA Faculty Fall 2011 - 2012.....	42
Faculty Headcount by Rank Fall 2011 - 2012.....	43
Detailed Composition of Faculty Fall 2011 - 2012	44

Staff..... 45

Detailed Composition of Staff Fall 2011 - 2012	45
--	----

GENERAL INFORMATION

TEXAS A&M UNIVERSITY-SAN ANTONIO

Established as the Texas A&M University-Kingsville System Center-San Antonio in January 2000, TAMU-SA was created as a stand-alone university on May 23, 2009. TAMU-SA meets the criteria for a Four-Year 5 SREB institution and offers 37 programs leading to baccalaureate and master's degrees. For more information, please visit www.tamusa.tamus.edu.

MISSION

Texas A&M University-San Antonio faculty and staff prepare and empower students through innovative and challenging academic and co-curricular programs that contribute to and enrich the economic and social development of the community and region. A solid foundation for success is established through dynamic teaching, scholarship, research, and public service that inspire graduates to lifelong learning and responsible global citizenship.

UNIVERSITY ACCREDITATION

Texas A&M University-Kingsville is accredited by the Southern Association of Colleges and Schools Commission on Colleges to award the bachelor's, master's, and doctoral degrees. Texas A&M University-San Antonio is part of Texas A&M University-Kingsville and is currently seeking separate accreditation by the Southern Association of Colleges and Schools Commission on Colleges.

UNIVERSITY PROFILE FALL 2012

Established	2009
President	Dr. Maria Hernandez Ferrier
Enrollment	4116 (FTE* 3,270.3)
Faculty	197 (FTE 163.75)
Staff	127
Schools	School of Arts & Sciences School of Business School of Education & Kinesiology
Degree Programs	37
Annual Degrees Awarded	888
Budget	\$37,042,828
Endowment	\$273,452
Annual Tuition & Fees	\$5,584.88**

*FTE student: 12 SCH per undergraduate, 9 SCH per graduate

**Based on two semesters for a full-time (12 SCH per semester), in-state undergraduate student

TEXAS A&M UNIVERSITY SYSTEM BOARD OF REGENTS 2012 - 2013

Officers FY2013

- Richard A. Box, Chairman, Board of Regents
- Phil Adams, Vice Chairman, Board of Regents

Member(s) with term set to expire February 1, 2013

- Richard Arthur Box
- Morris E. Foster
- James P. “Jim” Wilson

Member(s) with term set to expire on February 1, 2015

- Phil Adams
- Jim Schwertner
- John D. White

Member(s) with term set to expire on February 1, 2017

- Elaine Mendoza
- Judy Morgan
- Cliff Thomas

Member(s) with term set to expire May 31, 2013

- John “Quenten” D. Womack

Office of the Board of Regents
Texas A&M University
P.O. Box 15812
College Station, TX 77841-5013

(979) 845-9600

Vickie Spillers, Executive Director
vickie@tamus.edu

Darlene Levens
Assistant to the Board of Regents
kd-levenstamus.edu

TAMU-SA EXECUTIVE TEAM 2012 - 2013

Maria Hernandez Ferrier	President
Brent Marriott Snow	Provost and Vice President for Academic Affairs
Charles Rodriguez	Chief of Staff and Vice President for Strategic Initiatives and Military Affairs
Ken Mitts	Vice President for Finance and Administration, Chief Financial Officer
Melissa Mahan	Vice President of Student Affairs*
Marilu Reyna	Associate Vice President for University Communications

*Beginning April 2013

FACULTY SENATE 2012 - 2013

President:	Megan Wise de Valdez, Assistant Professor of Biology
Vice President:	Brian C. Brantley, Assistant Professor of Communication
Secretary:	Stefanie A. Wittenbach, University Librarian
Parliamentarian:	Mary G. Mayorga, Assistant Professor of Counseling

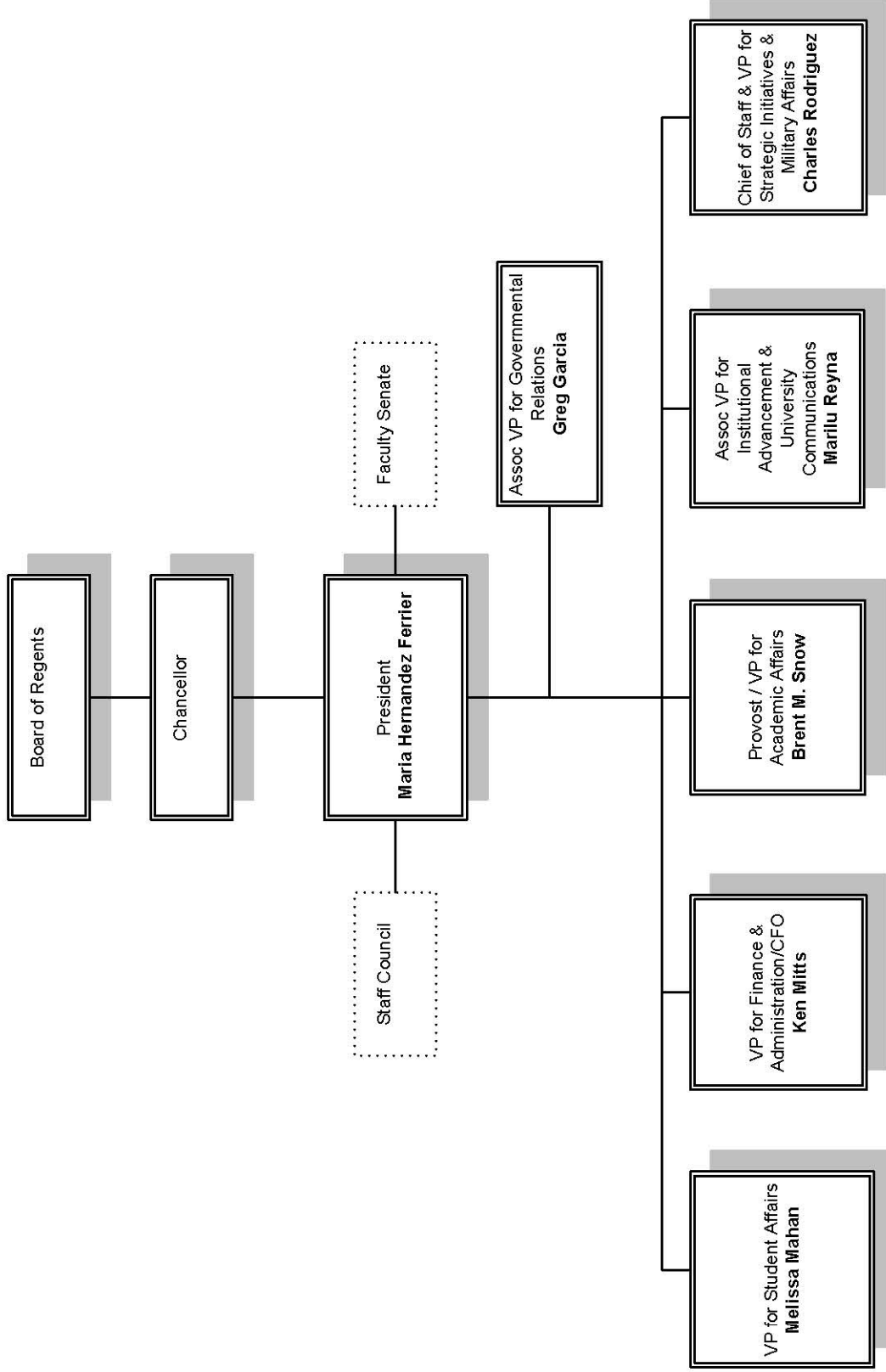
STAFF COUNCIL 2012 - 2013

President:	Jillian M. Reddish, Communications Specialist
President-Elect/Treasurer:	Lisa E. Pena, Executive Assistant to the Chief of Staff
Secretary:	Francisco Sanchez, Special Assistant to the Vice President for Finance & Administration
Parliamentarian:	James J. McQuade, Director of Procurement Services
Members:	Patricia C. Hayes, Director of Business Services
	Ebony S. Mays, Enrollment Customer Service Specialist
	Vaishali A. Bhatt, Interim Coordinator of User Services
	Leticia L. Longoria, Coordinator of Scheduling and Reports
	Norma L. Ramirez, Postal Carrier
	Ruben C. Porras, Microcomputer Technician II

STUDENT GOVERNMENT ASSOCIATION 2012 - 2013

President:	Melissa Quintanilla
Vice President:	Javier Carvejal
	Priscilla Lopez*

*As of Spring 2013



DEGREE PROGRAMS 2012 - 2013¹

Program	CIP Code	Degree Levels	
		Baccalaureate	Master's
SCHOOL OF ARTS & SCIENCES			
COMMUNICATIONS	09.0100.00	BA (120 SCH) Start date: 07/30/2009	
SPANISH	16.0905.00	BA (120 SCH) Start date: 04/18/2012	
ENGLISH	23.0101.00	BA (120 SCH) Start date: 07/30/2009	MA MS Start date: 07/30/2009
BIOLOGY	26.0101.00	BA (120 SCH) BS (120 SCH) Start date: 07/30/2009	
MATHEMATICS	27.0101.00	BA (120 SCH) BS (120 SCH) Start date: 07/30/2009	
APPLIED ARTS AND SCIENCES	30.9999.40	BAAS (120 SCH) Start date: 07/30/2009	
PSYCHOLOGY	42.0101.00	BA (120 SCH) Start date: 07/30/2009	
CRIMINOLOGY	45.0401.00	BS (120 SCH) Start date: 07/30/2009	
POLITICAL SCIENCE	45.1001.00	BA (120 SCH) Start date: 07/30/2009	
SOCIOLOGY	45.1101.00	BA (120 SCH) Start date: 07/30/2009	
HISTORY	54.0101.00	BA (120 SCH) Start date: 07/30/2009	
SCHOOL OF BUSINESS			
COMPUTER SCIENCE	11.0701.00	BS (120 SCH) Start date: 09/06/2011	
GENERAL BUSINESS ADMINISTRATION	52.0101.00	BBA (120 SCH) Start date: 07/30/2009	
BUSINESS ADMINISTRATION	52.0201.00		MBA Start date: 07/30/2009
MANAGEMENT	52.0201.00	BBA (120 SCH) Start date: 07/30/2009	
ACCOUNTING	52.0301.00	BBA (120 SCH) Start date: 07/30/2009	MPA (36 SCH) Start date: 01/17/2011
FINANCE	52.0801.00	BBA (120 SCH) Start date: 07/30/2009	
INTERNATIONAL BUSINESS MANAGMENT	52.1101.00	BBA (120 SCH) Start date: 07/30/2009	

¹ Source: The Texas Higher Education Coordinating Board University Program Inventory (<http://www.theccb.state.tx.us/apps/programinventory/>); accessed on 02/28/2013.

Program	CIP Code	Degree Levels	
		Baccalaureate	Master's
COMPUTER INFORMATION SYSTEMS	52.1201.00	BBA (120 SCH) Start date: 07/30/2009	
MARKETING	52.1401.00	BBA (120 SCH) Start date: 07/30/2009	
SCHOOL OF EDUCATION & KINESIOLOGY			
<i>DEPARTMENT OF CURRICULUM & KINESIOLOGY</i>			
BILINGUAL EDUCATION	13.0201.00		MA MS Start date: 07/30/2009
SPECIAL EDUCATION	13.1001.00		MED Start date: 07/30/2009
EARLY CHILDHOOD	13.1210.00		MED Start date: 07/30/2009
READING SPECIALIZATION	13.1315.00		MS Start date: 07/30/2009
INTERDISCIPLINARY STUDIES	30.9999.01	BS (120 SCH) Start date: 07/30/2009	
KINESIOLOGY	31.0505.00	BS (120 SCH) Start date: 07/30/2009	MS Start date: 07/30/2009
<i>DEPARTMENT OF LEADERSHIP & COUNSELING</i>			
EDUCATIONAL ADMINISTRATION	13.0401.00		MA MS Start date: 07/30/2009
COUNSELING AND GUIDANCE	13.1101.00		MA MS Start date: 07/30/2009

STUDENT INFORMATION

ADMISSIONS

Fall Admission Data by Level 2009 - 2012¹

	2009		2010		2011		2012	
	Count	Percent Conversion	Count	Percent Conversion	Count	Percent Conversion	Count	Percent Conversion
Undergraduate								
Applications	818		1,819		1,255		1,508	
Accepted	552	67%	1,650	91%	1,131	90%	1,312	87%
Enrolled	529	96%	1,216	74%	771	68%	886	68%
Post-Baccalaureate								
Applications	19		58		27		34	
Accepted	15	79%	47	81%	22	81%	33	97%
Enrolled	14	93%	30	64%	15	68%	24	73%
Graduate								
Applications	296		606		413		499	
Accepted	199	67%	527	87%	377	91%	441	88%
Enrolled	188	94%	374	71%	286	76%	334	76%
Total								
Applications	1,133		2,483		1,695		2,041	
Accepted	766	68%	2,224	90%	1,530	90%	1,786	88%
Enrolled	731	95%	1,620	73%	1,072	70%	1,244	70%

¹ Source: CBM001 and CBM00B

Fall 2012 Admission by School and Level²

	Applied	Accepted	Enrolled
School of Arts & Sciences			
Undergraduate	782	673	443
Post-Baccalaureate	1	0	0
Graduate	16	10	12
School of Business			
Undergraduate	421	369	232
Graduate	221	192	149
School of Education & Kinesiology			
Department of Curriculum & Kinesiology			
Undergraduate	299	266	204
Post-Baccalaureate	13	13	9
Graduate	77	72	54
Department of Leadership & Counseling			
Post-Baccalaureate	14	14	11
Graduate	188	170	127
Unknown			
Undergraduate	9	7	4
Post-Baccalaureate	7	7	4

2 Source: CBM001, CBM00B, and FactbookApplicants.SQL; sum of application counts in this table exceeds total in previous table as a result of students applying for admission to more than one school or at more than one level during the same term.

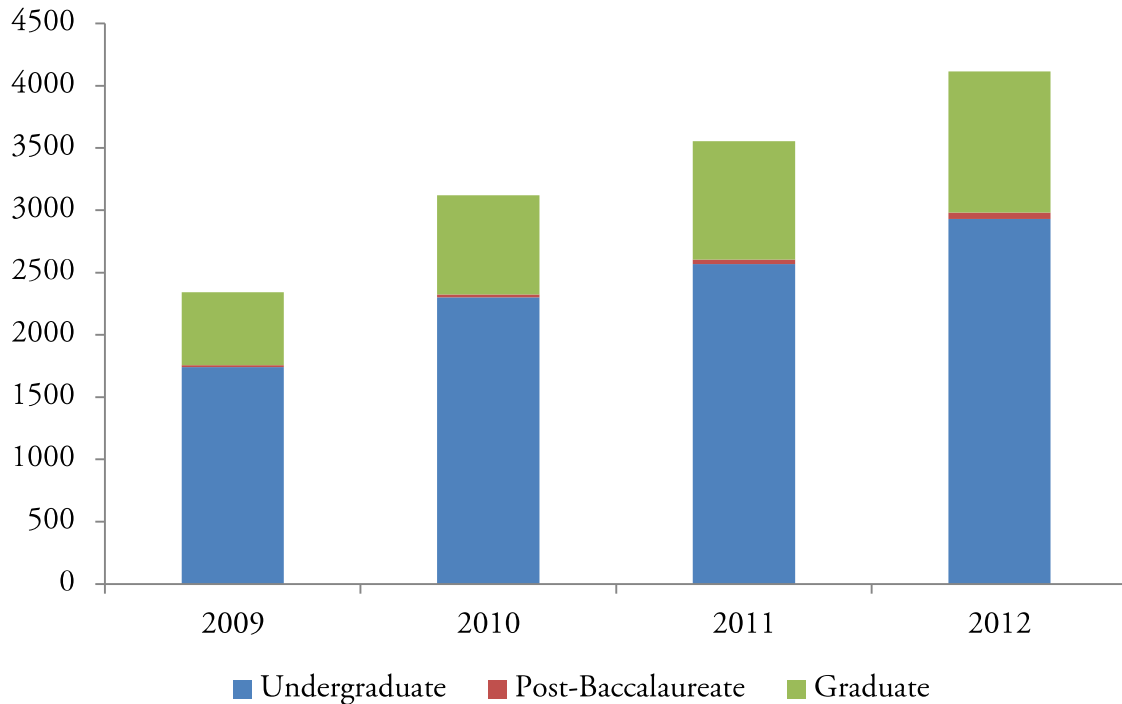
ENROLLMENT

Fall Enrollment by Level 2009 - 2012³

	2009		2010		2011		2012	
	Count	Percent	Count	Percent	Count	Percent	Count	Percent
Undergraduate	1,757	74.99%	2,324	74.49%	2,604	73.27%	2,983	72.47%
Graduate	586	25.01%	796	25.51%	950	26.73%	1,133	27.53%
Total	2,343		3,120		3,554		4,116	

Fall Enrollment by Coordinating Board Classification 2009 - 2012

	2009		2010		2011		2012	
	Count	Percent	Count	Percent	Count	Percent	Count	Percent
Undergraduate	1,740	74.26%	2,301	73.75%	2,569	72.28%	2,931	71.21%
Post-Baccalaureate	17	0.73%	23	0.74%	35	0.98%	52	1.26%
Graduate	586	25.01%	796	25.51%	950	26.73%	1,133	27.53%
Total	2,343		3,120		3,554		4,116	



³ Source: CBM001. Each student is counted once regardless of number of enrolled courses.

Detailed Composition of Student Body Fall 2009 - 2012⁴

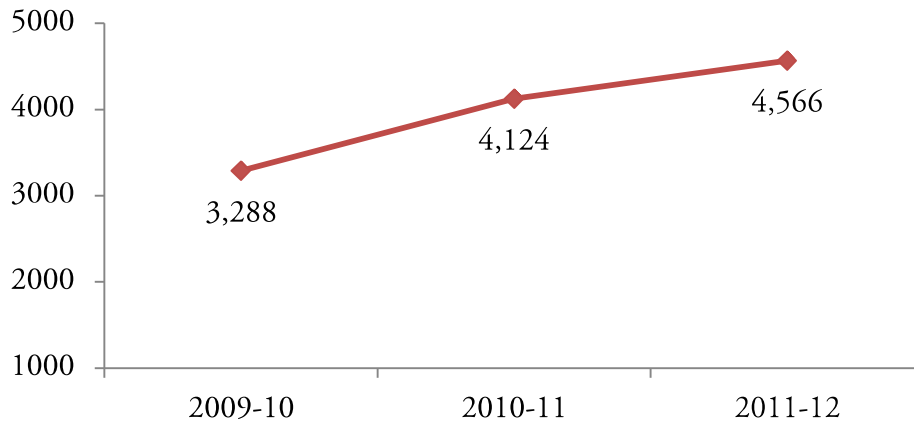
	Fall 2009		Fall 2010		Fall 2011		Fall 2012	
	Count	Percent	Count	Percent	Count	Percent	Count	Percent
Attendance Status								
Full-Time	946	40.38%	1,284	41.15%	1,444	40.63%	1,634	39.70%
Part-Time	1,397	59.62%	1,836	58.85%	2,110	59.37%	2,482	60.30%
Enrollment by School								
Arts & Sciences	634	27.06%	889	28.49%	1,064	29.94%	1,316	31.97%
Business	625	26.68%	867	27.79%	978	27.52%	1,198	29.11%
Education & Kinesiology								
Curriculum & Kinesiology	844	36.02%	1020	32.69%	1120	31.51%	1,124	27.31%
Leadership & Counseling	239	10.20%	328	10.51%	376	10.58%	459	11.15%
Unknown	1	0.04%	16	0.51%	16	0.45%	19	0.46%
Gender								
Male	763	32.57%	1,019	32.66%	1,139	32.05%	1,342	32.60%
Female	1,580	67.43%	2,101	67.34%	2,415	67.95%	2,774	67.40%
Race								
American Indian or Alaskan Native	8	0.34%	9	0.29%	4	0.11%	69	1.68%
Asian	29	1.24%	7	0.22%	20	0.56%	48	1.17%
Black or African-American	138	5.89%	183	5.87%	206	5.80%	270	6.56%
International	5	0.21%	7	0.22%	10	0.28%	19	0.46%
Multiracial	0	0.00%	12	0.38%	31	0.87%	102	2.48%
Native Hawaiian or Other Pacific Islander	0	0.00%	1	0.03%	2	0.06%	4	0.10%
Unknown or Not Reported	53	2.26%	182	5.83%	180	5.06%	1,021	24.81%
White	609	25.99%	693	22.21%	803	22.59%	2,583	62.76%
Ethnicity								
Hispanic or Latino	1,501	64.06%	2,026	64.94%	2,298	64.66%	2,797	67.95%
Not Hispanic or Latino	789	33.67%	912	29.23%	1,076	30.28%	1,233	29.96%
Unreported	53	2.26%	182	5.83%	180	5.06%	86	2.09%
Total Enrollment	2,343		3,120		3,554		4,116	

⁴ Source: CBM001. As of fall 2012, the Texas Higher Education Coordinating Board had disaggregated the reporting of race and ethnicity. Because of this shift in reporting, the total for all races prior to fall 2012 will be less than the total enrollment for those years.

Annual Enrollment by Level⁵

	2009-2010	2010-2011	2011-2012
Fall			
Undergraduate	1,740	2,301	2,569
Post-Baccalaureate	17	23	35
Graduate	586	796	950
Total	2,343	3,120	3,554
Spring			
Undergraduate	1,865	2,348	2,573
Post-Baccalaureate	25	27	39
Graduate	678	866	988
Total	2,568	3,241	3,600
Summer			
Undergraduate	978	1,033	1,028
Post-Baccalaureate	13	15	17
Graduate	440	477	565
Total	1,431	1,525	1,610

Annual Unduplicated Enrollment⁶

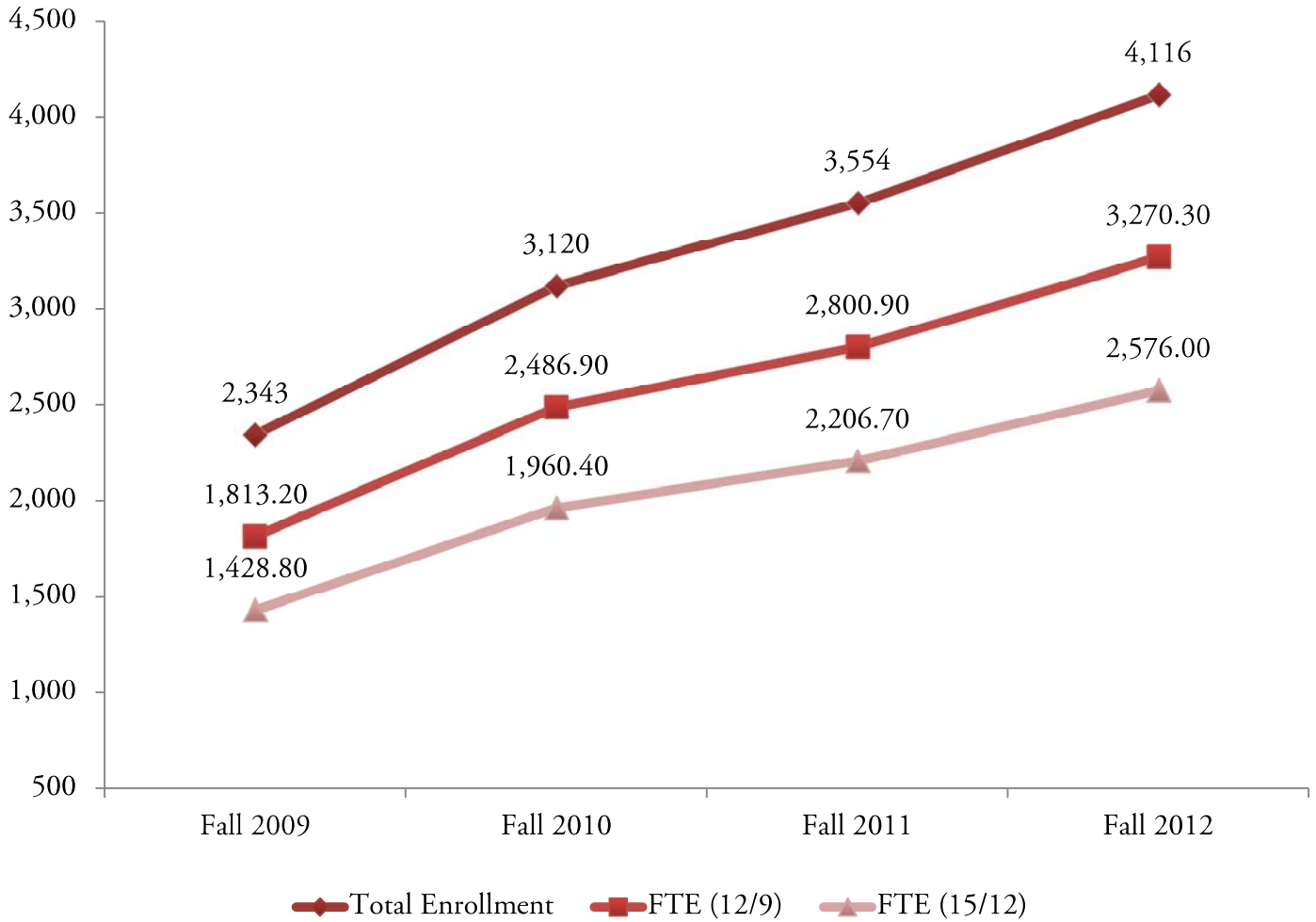


5 Source: CBM001

6 Students who enrolled in more than one semester of the academic year are counted only once in this total.

Fall FTE Enrollment 2009 - 2012

	Fall 2009	Fall 2010	Fall 2011	Fall 2012
Total Enrollment	2,343	3,120	3,554	4,116
FTE (12/9)	1,813.2	2,486.9	2,800.9	3,270.3
FTE (15/12)	1,428.8	1,960.4	2,206.7	2,576.0



FTE (12/9) is based on 12 SCH per undergraduate student and 9 SCH per graduate student.
 FTE (15/12) is based on 15 SCH per undergraduate student and 12 SCH per graduate student.

Fall Enrollment by Major, 2009 - 2012⁷

	Fall 2009	Fall 2010	Fall 2011	Fall 2012
School of Arts & Sciences				
Applied Arts & Sciences				
Undergraduate	170	183	228	349
Post-baccalaureate		1		3
Graduate				
Total	170	184	228	352
Biology				
Undergraduate	40	91	119	135
Post-baccalaureate			1	5
Graduate				
Total	40	91	120	140
Communication				
Undergraduate	22	37	39	51
Post-baccalaureate				1
Graduate				
Total	22	37	39	52
Criminology				
Undergraduate	102	155	186	207
Post-baccalaureate		1	1	5
Graduate				
Total	102	156	187	212
English				
Undergraduate	42	55	72	90
Post-baccalaureate		1		1
Graduate	3	10	12	17
Total	45	66	84	108
History				
Undergraduate	56	74	68	74
Post-baccalaureate	1	2		1
Graduate	1			
Total	58	76	68	75
Mathematics				
Undergraduate	11	30	41	48
Post-baccalaureate			3	3
Graduate				
Total	11	30	44	51

⁷ Source: CBM001

Fall Enrollment by Major, 2009 - 2012 (con't.)

	Fall 2009	Fall 2010	Fall 2011	Fall 2012
Political Science				
Undergraduate	6	8	16	17
Post-baccalaureate				
Graduate				
Total	6	8	16	17
Psychology				
Undergraduate	128	164	199	223
Post-baccalaureate	1	4	4	1
Graduate				
Total	129	168	203	224
Sociology				
Undergraduate	51	73	74	84
Post-baccalaureate			1	1
Graduate				
Total	51	73	75	85
School of Business				
Accounting				
Undergraduate	108	123	136	178
Post-baccalaureate	11	8	13	21
Graduate			29	49
Total	119	131	178	248
Business Administration				
Undergraduate	172	202	152	184
Post-baccalaureate				
Graduate	153	257	321	384
Total	325	459	473	568
Computer Information Systems				
Undergraduate	70	74	94	94
Post-baccalaureate	1		4	4
Graduate				
Total	71	74	98	98
Computer Science				
Undergraduate				5
Post-baccalaureate				
Graduate				
Total				5
Finance				
Undergraduate	28	33	58	56
Post-baccalaureate				1
Graduate				
Total	28	33	58	57

Fall Enrollment by Major, 2009 - 2012 (con't.)

	Fall 2009	Fall 2010	Fall 2011	Fall 2012
General Business Administration				
Undergraduate	39	93	103	137
Post-baccalaureate		1	2	1
Graduate				
Total	39	94	105	138
International Business Management				
Undergraduate	9	31	31	31
Post-baccalaureate				
Graduate				
Total	9	31	31	31
Marketing				
Undergraduate	34	44	35	52
Post-baccalaureate		1		1
Graduate				
Total	34	45	35	53
School of Education & Kinesiology				
Department of Curriculum & Kinesiology				
Bilingual Education				
Undergraduate				
Post-baccalaureate				
Graduate	46	33	36	31
Total	46	33	36	31
Early Childhood				
Undergraduate				
Post-baccalaureate				
Graduate	44	46	43	48
Total	44	46	43	48
Grades 8-12 Certification				
Undergraduate				
Post-baccalaureate				
Graduate	22	23	20	21
Total	22	23	20	21
Interdisciplinary Studies				
Undergraduate	543	696	807	792
Post-baccalaureate	2	2	4	1
Graduate				
Total	545	698	811	793
Kinesiology				
Undergraduate	109	134	108	115
Post-baccalaureate			1	1
Graduate	6	11	27	22

Fall Enrollment by Major, 2009 - 2012 (con't.)

	Fall 2009	Fall 2010	Fall 2011	Fall 2012
Total	115	145	136	138
Reading Specialization				
Undergraduate				
Post-baccalaureate				
Graduate	21	18	24	32
Total	21	18	24	32
Special Education				
Undergraduate				
Post-baccalaureate				
Graduate	51	57	50	61
Total	51	57	50	61
Department of Leadership & Counseling				
Counseling & Guidance				
Undergraduate				
Post-baccalaureate				
Graduate	167	223	265	333
Total	167	223	265	333
Educational Administration				
Undergraduate				
Post-baccalaureate				
Graduate	72	105	111	126
Total	72	105	111	126
Undeclared/Unknown				
Undergraduate		1	3	9
Post-baccalaureate	1	2	1	1
Graduate		13	12	9
Total	1	16	16	19
Grand total	2,343	3,120	3,554	4,116

Fall Enrollment by Texas Residential County, 2009 - 2012⁸

County	Fall 2009		Fall 2010		Fall 2011		Fall 2012	
	Count	Percent	Count	Percent	Count	Percent	Count	Percent
Bexar	1,839	78.5%	2,442	78.3%	2,757	77.6%	3,281	79.7%
Wilson	73	3.1%	84	2.7%	110	3.1%	116	2.8%
Medina	63	2.7%	75	2.4%	77	2.2%	82	2.0%
Atascosa	64	2.7%	64	2.1%	66	1.9%	75	1.8%
Guadalupe	50	2.1%	62	2.0%	55	1.5%	71	1.7%
Comal	19	0.8%	32	1.0%	30	0.8%	37	0.9%
Frio	17	0.7%	21	0.7%	20	0.6%	19	0.5%
Webb	3	0.1%	6	0.2%	11	0.3%	14	0.3%
Kendall	6	0.3%	9	0.3%	11	0.3%	10	0.2%
Other Counties	162	6.9%	254	8.1%	352	9.9%	363	8.8%
Total Texas	2,296	98.0%	3,049	97.7%	3,489	98.2%	4,068	98.8%
Other States	12	0.5%	17	0.5%	21	0.6%	9	0.2%
Other Countries	1	0.0%	0	0.0%	1	0.0%	1	0.0%
Unknown	35	1.5%	55	1.8%	45	1.3%	40	1.0%
Total	2,343		3,120		3,554		4,116	

⁸ Source: CBM001 and FallEnrolledByCounty.SQL

Fall Enrollment by Age, 2009 - 2012⁹

	Fall 2009		Fall 2010		Fall 2011		Fall 2012	
	Count	Percent	Count	Percent	Count	Percent	Count	Percent
<21	12	0.5%	22	0.7%	32	0.9%	47	1.1%
21-25	682	29.1%	869	27.9%	992	27.9%	1,128	27.4%
26-30	533	22.7%	795	25.5%	903	25.4%	1,024	24.9%
31-35	383	16.3%	487	15.6%	573	16.1%	652	15.8%
36-40	298	12.7%	371	11.9%	405	11.4%	470	11.4%
41-45	184	7.9%	258	8.3%	281	7.9%	328	8.0%
46-50	117	5.0%	158	5.1%	184	5.2%	234	5.7%
>50	134	5.7%	160	5.1%	184	5.2%	233	5.7%
Total	2,343		3,120		3,554		4,116	
Average	32.3		32.2		32.1		32.4	

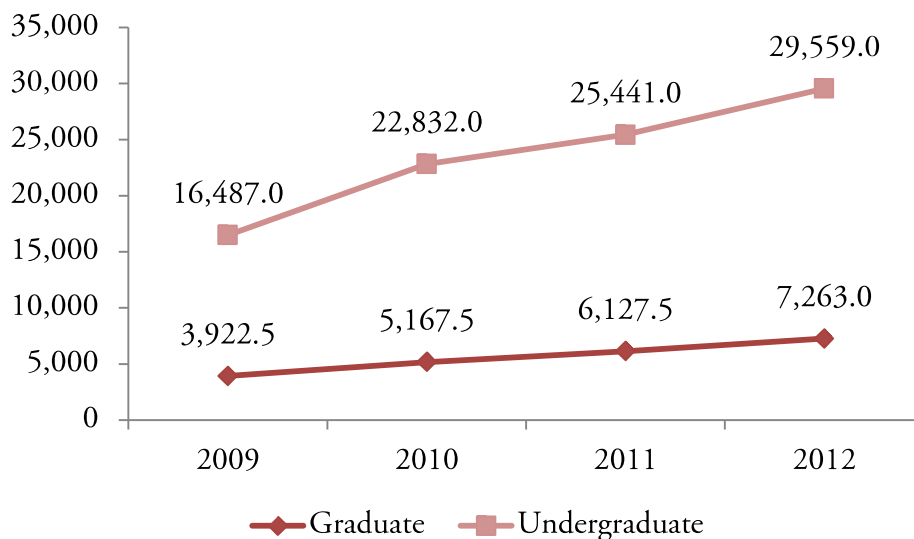
Fall Enrollment by Age and Level, Fall 2012

	Undergraduate		Post-baccalaureate		Graduate		Total	
	Count	Percent	Count	Percent	Count	Percent	Count	Percent
<21	47	1.6%	0	0.0%	0	0.0%	47	1.1%
21-25	962	32.8%	4	7.7%	162	14.3%	1128	27.4%
26-30	711	24.3%	7	13.5%	306	27.0%	1024	24.9%
31-35	414	14.1%	17	32.7%	221	19.5%	652	15.8%
36-40	300	10.2%	4	7.7%	166	14.7%	470	11.4%
41-45	211	7.2%	9	17.3%	108	9.5%	328	8.0%
46-50	146	5.0%	3	5.8%	85	7.5%	234	5.7%
>50	140	4.8%	8	15.4%	85	7.5%	233	5.7%
Total	2,931		52		1,133		4,116	
Average	31.3		38.2		34.8		32.4	

⁹ Source: CBM001

CREDIT HOUR

Semester Credit Hours, Fall 2009 - 2012¹⁰



Semester Credit Hours by School & Level, Fall 2009 - 2012¹¹

	2009	2010	2011	2012
School of Arts & Sciences				
Undergraduate	5,441	8,003	9,899	1,1025
Graduate	21	48	69	105
Total	5,462	8,051	9,968	11,130
School of Business				
Undergraduate	5,238	6,762	6,813	8,922
Graduate	1,060.5	1,531.5	2,164.5	2,697
Total	6,298.5	8,293.5	8,977.5	11,619
School of Education & Kinesiology				
Department of Curriculum & Kinesiology				
Undergraduate	5,808	8,067	8,729	9,612
Graduate	1,383	1,260	1,278	1,383
Total	7,191	9,327	10,007	10,995
Department of Leadership & Counseling				
Graduate	1,458	2,328	2,616	3,078
Grand Total				
Undergraduate	16,487	22,832	25,441	29,559
Graduate	3,922.5	5,167.5	6,127.5	7,263
Total	20,409.5	27,999.5	31,568.5	36,822

¹⁰ Source: CBM004

¹¹ Based on course instruction area.

Semester Credit Hours by School, Instruction Area & Level, Fall 2012¹²

	UGRD	GRAD	Total
School of Arts & Sciences			
Biology	901		901
Chemistry	144		144
Communication	219		219
Communications - Journalism	66		66
Criminology	2,517		2,517
English	1,005	105	1,110
Geography	141		141
History	1,287		1,287
Mathematics	369		369
Military Science	18		18
Political Science	246		246
Psychology	2,693		2,693
Sociology	1,398		1,398
Women's Studies	21		21
Total	11,025	105	11,130
School of Business			
Accounting	1,005	571.5	1,576.5
Business Administration	792	25.5	817.5
Business Communication	786		786
Business Law	732		732
Computer Information Systems	1,413	342	1,755
Computer Science	81		81
Economics	156	276	432
Finance	486	303	789
Management	2,565	925.5	3,490.5
Marketing	906	253.5	1,159.5
Total	8,922	2,697	11,619

12 Source: CBM004

Semester Credit Hours by School, Instruction Area & Level, Fall 2012 (con't.)

	UGRD	GRAD	Total
School of Education & Kinesiology			
Department of Curriculum & Kinesiology			
Bilingual Education	1,431	72	1,503
Early Childhood	777	156	933
Education	3,705	480	4,185
Education Field Experience	1,040		1,040
English as a Second Language		63	63
Kinesiology	628	108	736
Reading	807	192	999
Special Education	1,224	312	1,536
Total	9,612	1,383	10,995
Department of Leadership & Counseling			
Counseling and Guidance		2,349	2,349
Educational Administration		729	729
Total	0	3,078	3,078
Total	9,612	4,461	14,073
Grand Total	29,559	7,263	36,822

Semester Credit Hours by School, Major, & Level, Fall 2012¹³

	UGRD	PB	GRAD	Total
School of Arts & Sciences				
Applied Arts & Sciences	3,164	27		3,191
Biology	1,376	55		1,431
Communication	425	9		434
Criminology	2,090	45		2,135
English	897	9	108	1,014
History	718	6		724
Mathematics	441	21		462
Political Science	150			150
Psychology	2,266	6		2,272
Sociology	787	12		799
Total	12,314	190	108	12,612
School of Business				
Accounting	1,821	141	324	2,286
Business Administration	1,788		2,450	4,238
Computer Information Systems	858	30		888
Computer Science	54			54
Finance	519	3		522
General Business Administration	1,290	9		1,299
International Business Administration	339			339
Marketing	513	6		519
Total	7,182	189	2,774	10,145
School of Education & Kinesiology				
Department of Curriculum & Kinesiology				
Bilingual Education			201	201
Early Childhood			312	312
Grades 8-12 Certification			171	171
Interdisciplinary Studies	8,546	6		8,552
Kinesiology	1,017	9	138	1,164
Reading Specialization			193	193
Special Education			423	423
Total	9,563	15	1,438	11,016
Department of Leadership & Counseling				
Counseling and Guidance			2,340	2,340
Educational Administration			719	719
Total	0	0	3,059	3,059
Total	9,563	15	4,497	14,065
Unknown	52	3	33	88
Grand Total	29,111	397	7,412	36,920

Student/Faculty Ratio, 2011 - 2012

	Fall 2011	Fall 2012
FTE (12/9)		
Undergraduate	2,120.1	2,463.3
Graduate	680.8	807.0
Total	2,800.9	3,270.3
S/F Ratio	21.8	23.7
FTE (15/12)		
Undergraduate	1,696.1	1,970.6
Graduate	510.6	605.3
Total	2,206.7	2,575.9
S/F Ratio	17.2	18.7
Faculty FTE	128.3	138.0

Class & Semester Credit Hour Load, 2009 - 2012¹⁴

	Fall 2009	Fall 2010	Fall 2011	Fall 2012
Class Sections Offered	325	455	529	580
Instruction Type				
Organized*	300	451	525	559
Individual Instruction	25	4	4	21
Instruction Mode				
Face-to-Face	323	439	349	358
Online	1	16	52	74
Two-Way Interactive Video	1			
Multiple or Other Electronic Media				1
Hybrid			128	147
Average Size				
Organized Class*	20.3	19.8	18.4	20.1
Undergraduate	21.3	20.5	18.9	20.5
Graduate	17.2	17.4	16.6	18.5
Average SCH Load/Student				
Undergraduate	9.4	9.8	9.8	9.9
Graduate	6.7	6.5	6.5	6.4
Average Class Load/Student				
Undergraduate	3.1	3.3	3.3	3.3
Graduate	2.3	2.3	2.2	2.2

*Organized classes include those classified as lecture, laboratory, or seminar.

14 Source: CBM004.

Annual SCH by Level, 2009 - 2012¹⁵

	2009-10	2010-11	2011-12
Fall			
Undergraduate	16,508.0	22,832.0	25,441.0
Graduate	3,943.5	5,257.5	6,127.5
Total	20,451.5	28,089.5	31,568.5
Spring			
Undergraduate	18,450.0	22,374.0	25,882.0
Graduate	4,669.5	5,766.0	6,438.0
Total	23,119.5	28,140.0	32,320.0
Summer			
Undergraduate	6,661.0	7,062.0	6,819.0
Graduate	2,740.5	2,967.0	3,414.0
Total	9,401.5	10,029.0	10,233.0
Total			
Undergraduate	41,619.0	52,268.0	58,142.0
Graduate	11,353.5	13,990.5	15,979.5
Total	52,972.5	66,258.5	74,121.5

15 Source: CBM004

SCH Generated by Instruction Mode, 2009 - 2012¹⁶

	Fall 2009	Fall 2010	Fall 2011	Fall 2012
Face-to-Face				
Sections	325	439	349	358
Enrollment	7,441	9,181	6,678	7,084
SCH	20,334.5	27,201.5	19,762.0	21,306.0
Online				
Sections	1	16	52	74
Enrollment	36	333	1,472	1,968
SCH	108.0	888.0	4,186.5	5,571.0
Two-Way Interactive Video				
Sections	1			
Enrollment	3			
SCH	9.0			
Multiple or Other Electronic Media				
Sections				1
Enrollment				3
SCH				9.0
Hybrid				
Sections			128	147
Enrollment			2,523	3,302
SCH			7,620.0	9,936.0
Total				
Sections	327	455	529	580
Enrollment	7,480	9,514	10,673	12,357
SCH	20,451.5	28,089.5	31,568.5	36,822.0

16 Source: CBM004

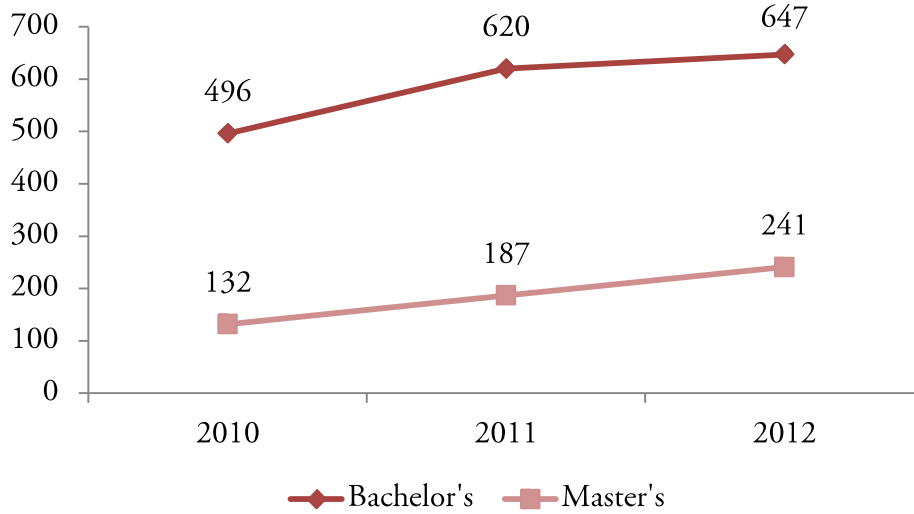
SCH Generated by School, Instruction Mode, & Level, Fall 2012¹⁷

	UGRD		GRAD		Total	
	Sections	SCH	Sections	SCH	Sections	SCH
School of Arts & Sciences	176.67	11,025	5.33	105	182	11,130
Face-to-Face	126.67	7,488	5.33	105	132	7,593
Online	27	2,460			27	2,460
Hybrid	23	1,077			23	1,077
School of Business	116	8,922	42	2,697	158	11,619
Face-to-Face	38.5	2,406	6.5	468	45	2,874
Online	26	1,953	8	312	34	2,265
Hybrid	51.5	4,563	27.5	1,917	79	6,480
School of Education & Kinesiology						
Department of Curriculum & Kinesiology	150.5	9,612	37.5	1,383	188	10,995
Face-to-Face	137.5	8,691	14.5	342	152	9,033
Online	8	591	3	123	11	714
Multiple or Other Electronic Media			1	9	1	9
Hybrid	5	330	19	909	24	1,239
Department of Leadership & Counseling		0	52	3,078	52	3,078
Face-to-Face			29	1,806	29	1,806
Online			2	132	2	132
Hybrid			21	1,140	21	1,140
Total	443.17	29,559	136.83	7,263	580	36,822
Face-to-Face	302.67	18,585	55.33	2,721	358	21,306
Online	61	5,004	13	567	74	5,571
Multiple of Other Electronic Media			1	9	1	9
Hybrid	79.5	5,970	67.5	3,966	147	9,936

17 Source: CBM004

DEGREES AWARDED

Annual Degrees Conferred by Level, 2009 - 2012¹⁸



Degrees Conferred by School & Level, 2009 - 2012

	2010	2011	2012
School of Arts & Sciences			
Bachelor's	203	253	306
Master's			3
Total	203	253	309
School of Business			
Bachelor's	113	144	129
Master's	20	36	76
Total	133	180	205
School of Education & Kinesiology			
Department of Curriculum & Kinesiology			
Bachelor's	180	223	212
Master's	52	50	52
Total	232	273	264
Department of Leadership & Counseling			
Master's	60	101	110
Total			
Bachelor's	496	620	647
Master's	132	187	241
Total	628	807	888

Degrees Conferred by Level & Ethnicity, 2009 - 2012¹⁹

	2010		2011		2012	
	Count	Percent	Count	Percent	Count	Percent
Bachelor's						
Hispanic or Latino origin	326	65.7%	406	65.5%	407	62.9%
Not Hispanic or Latino origin	163	32.9%	178	28.7%	198	30.6%
Unknown	7	1.4%	36	5.8%	42	6.5%
Master's						
Hispanic or Latino origin	81	61.4%	102	54.5%	145	60.2%
Not Hispanic or Latino origin	49	37.1%	67	35.8%	79	32.8%
Unknown	2	1.5%	18	9.6%	17	7.1%
Total						
Hispanic or Latino origin	407	64.8%	508	62.9%	552	62.2%
Not Hispanic or Latino origin	212	33.8%	245	30.4%	277	31.2%
Unknown	9	1.4%	54	6.7%	59	6.6%

19 Source: CBM009

Degrees Conferred by Level & Race, 2009 - 2012²⁰

	2010		2011		2012	
	Count	Percent	Count	Percent	Count	Percent
Bachelor's						
White	168	33.9%	237	38.2%	312	48.2%
Black or African-American	18	3.6%	34	5.5%	32	4.9%
Asian		0.0%	1	0.2%	4	0.6%
American Indian or Alaskan Native	3	0.6%	7	1.1%	12	1.9%
International		0.0%	3	0.5%	1	0.2%
Native Hawaiian or Other Pacific Islander		0.0%		0.0%	1	0.2%
Two or more races	1	0.2%	5	0.8%	9	1.4%
Unknown	306	61.7%	333	53.7%	276	42.7%
Master's						
White	53	40.2%	71	38.0%	106	44.0%
Black or African-American	7	5.3%	11	5.9%	15	6.2%
Asian		0.0%		0.0%	1	0.4%
American Indian or Alaskan Native	2	1.5%		0.0%	2	0.8%
International		0.0%	1	0.5%	1	0.4%
Native Hawaiian or Other Pacific Islander						
Two or more races	1	0.8%	3	1.6%	7	2.9%
Unknown	69	52.3%	101	54.0%	109	45.2%
Total						
White	221	35.2%	308	38.2%	418	47.1%
Black or African-American	25	4.0%	45	5.6%	47	5.3%
Asian		0.0%	1	0.1%	5	0.6%
American Indian or Alaskan Native	5	0.8%	7	0.9%	14	1.6%
International		0.0%	4	0.5%	2	0.2%
Native Hawaiian or Other Pacific Islander		0.0%		0.0%	1	0.1%
Two or more races	2	0.3%	8	1.0%	16	1.8%
Unknown	375	59.7%	434	53.8%	385	43.4%

20 Source: CBM009

Degrees Conferred by School, Major, & Level, 2009 - 2012²¹

	2010	2011	2012
School of Arts & Sciences			
Applied Arts & Sciences			
Bachelor's	99	106	104
Master's			
Total	99	106	104
Biology			
Bachelor's	1	15	27
Master's			
Total	1	15	27
Communications			
Bachelor's	1	7	11
Master's			
Total	1	7	11
Criminology			
Bachelor's	22	35	51
Master's			
Total	22	35	51
English			
Bachelor's	10	18	15
Master's			3
Total	10	18	18
History			
Bachelor's	23	17	15
Master's			
Total	23	17	15
Mathematics			
Bachelor's	4	1	10
Master's			
Total	4	1	10
Political Science			
Bachelor's	3	1	3
Master's			
Total	3	1	3
Psychology			
Bachelor's	32	34	52
Master's			
Total	32	34	52

21 Source: CBM009

Degrees Conferred by School, Major, & Level, 2009 - 2012 (con't.)

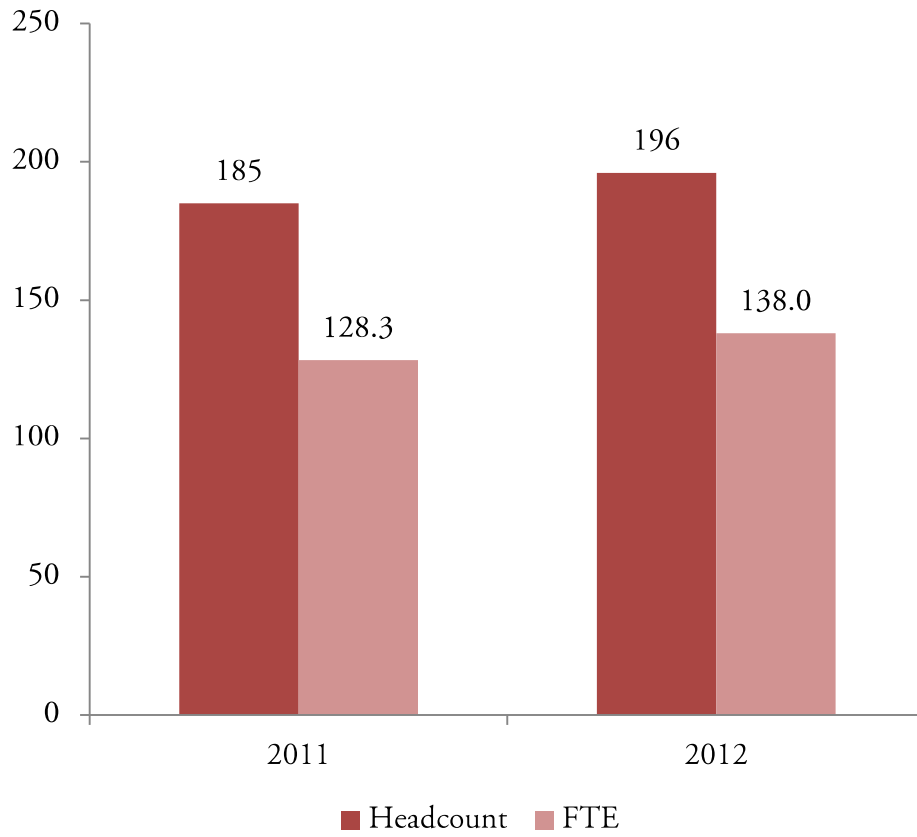
	2010	2011	2012
Sociology			
Bachelor's	8	19	18
Master's			
Total	8	19	18
School of Business			
Accounting			
Bachelor's	32	29	30
Master's		2	10
Total	32	31	40
Business Administration			
Bachelor's	52	77	49
Master's	20	34	66
Total	72	111	115
Computer Information Systems			
Bachelor's	14	8	15
Master's			
Total	14	8	15
Finance			
Bachelor's	5	5	10
Master's			
Total	5	5	10
General Business Administration			
Bachelor's	2	7	8
Master's			
Total	2	7	8
International Business Management			
Bachelor's		4	10
Master's			
Total		4	10
Marketing			
Bachelor's	8	14	7
Master's			
Total	8	14	7

Degrees Conferred by School, Major, & Level, 2009 - 2012 (con't.)

	2010	2011	2012
School of Education & Kinesiology			
Department of Curriculum & Kinesiology			
Bilingual Education			
Bachelor's			
Master's	14	20	11
Total	14	20	11
Early Childhood			
Bachelor's			
Master's	12	7	15
Total	12	7	15
Interdisciplinary Studies			
Bachelor's	157	185	182
Master's			
Total	157	185	182
Kinesiology			
Bachelor's	23	38	30
Master's		2	3
Total	23	40	33
Reading Specialization			
Bachelor's			
Master's	8	5	7
Total	8	5	7
Special Education			
Bachelor's			
Master's	18	16	16
Total	18	16	16
Department of Leadership & Counseling			
Counseling and Guidance			
Bachelor's			
Master's	47	64	74
Total	47	64	74
Educational Administration			
Bachelor's			
Master's	13	37	36
Total	13	37	36
Total			
Bachelor's	496	620	647
Master's	132	187	241
Total	628	807	888

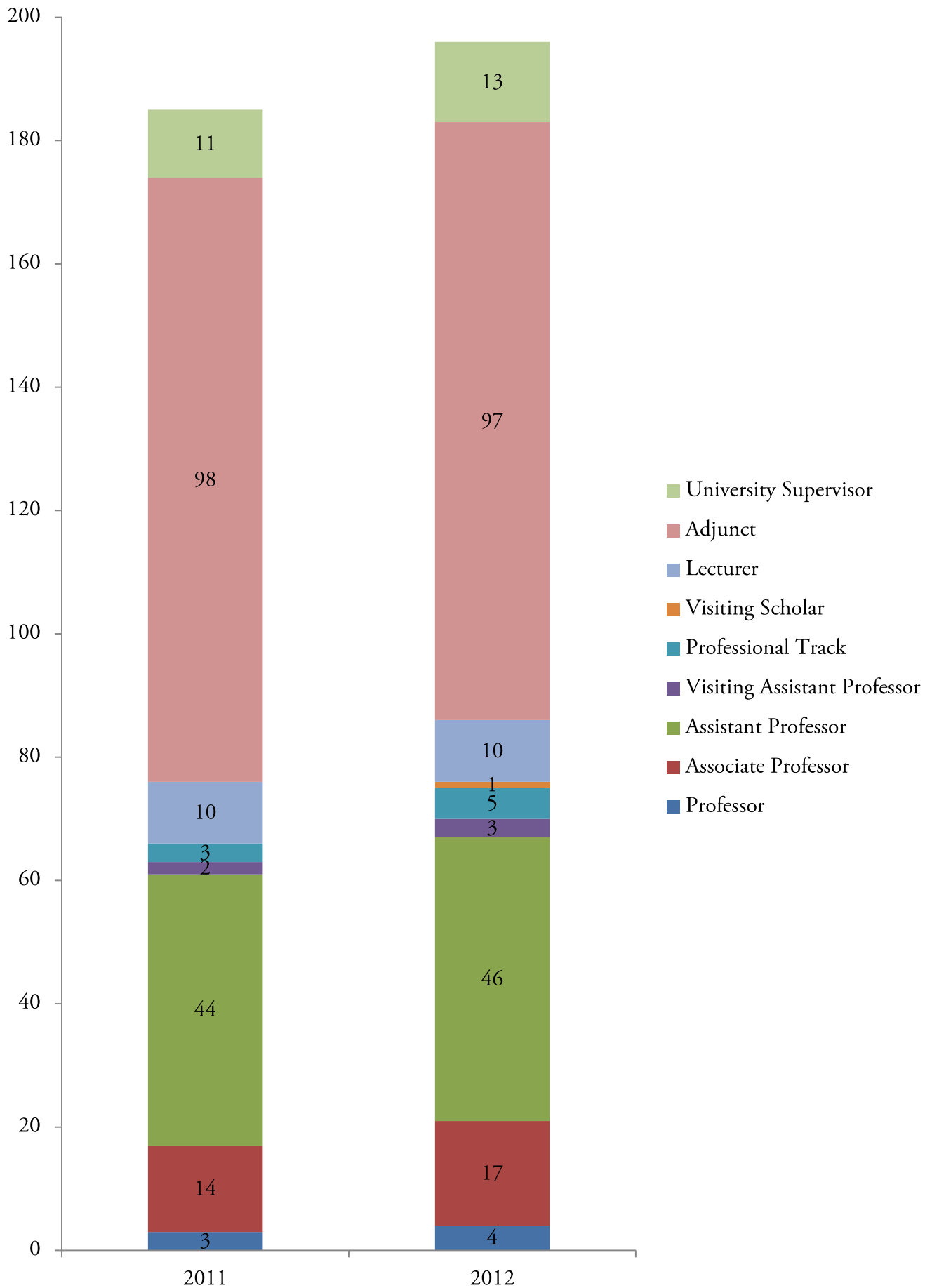
FACULTY AND STAFF

TAMU-SA Faculty Fall 2011 - 2012²²



22 Source: CBM008 and Office of the Provost

Faculty Headcount by Rank Fall 2011 - 2012²³



Detailed Composition of Faculty Fall 2011 - 2012²⁴

	2011		2012	
	Count	Percent	Count	Percent
School				
Arts & Sciences	61	33.2%	71	36.2%
Business	45	24.5%	48	24.5%
Education & Kinesiology				
Department of Curriculum & Kinesiology	57	31.0%	51	26.0%
Department of Leadership & Counseling	21	11.4%	26	13.3%
Ethnicity				
Hispanic or Latino origin	102	55.4%	56	28.6%
Not Hispanic or Latino origin	8	4.3%	115	58.7%
Not reported	74	40.2%	25	12.8%
Race				
White	69	37.5%	74	37.8%
Black or African-American	3	1.6%	3	1.5%
Asian	3	1.6%	5	2.6%
American Indian or Alaskan Native				
International	3	1.6%		0.0%
Native Hawaiian or Other Pacific Islander				
Two or more races				
Unknown	106	57.6%	114	58.2%
Gender				
Female	101	54.9%	107	54.6%
Male	83	45.1%	89	45.4%
Tenure Status				
Tenured	13	7.1%	20	10.2%
Tenure Track	45	24.5%	48	24.5%
Non-Tenured	126	68.5%	128	65.3%
Rank				
Professor	3	1.6%	4	2.0%
Associate Professor	14	7.6%	17	8.7%
Assistant Professor	44	23.8%	46	23.5%
Visiting Assistant Professor	2	1.1%	3	1.5%
Professional Track	3	1.6%	5	2.6%
Visiting Scholar		0.0%	1	0.5%
Lecturer	10	5.4%	10	5.1%
Adjunct	98	53.0%	97	49.5%
University Supervisor	11	5.9%	13	6.6%

Detailed Composition of Staff Fall 2011 - 2012²⁵

	2011	2012
Classification		
Clerical	20	24
Executive/Admin/Mgr	22	24
Professional Non-Faculty	35	45
Service/Maintenance	13	15
Skilled Craft	1	3
Technical/Paraprof.	13	16
Total	104	127
Race/Ethnicity		
White	35	37
Black or African-American	5	7
Hispanic	61	77
Asian	1	2
American Indian or Alaskan Native	1	1
Two or more races	1	1
Unknown	-	2
Total	104	127
Gender		
Female	65	78
Male	39	49
Total	104	127